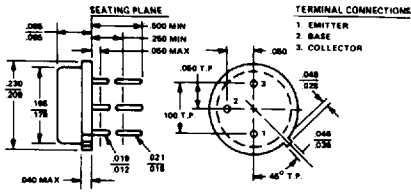


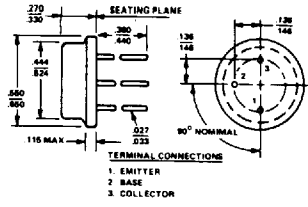
**COLLECTOR CURRENT = 5 AMPS PNP TYPES—Continued**

Device No	Case	VCBO Volts	VCE0 (sus) Volts	VEBO Volts	hFE		VCE	IC	VCE (sat)	VBE (sat)	@ IC	@ IB	θ <sub>JC</sub> °C/W	F <sub>t</sub> MHz
					Min	Max								
2N3171	TO-3	40	40	10	12	36	3	1	.75	1.8	1	.14	2.3	60
2N3172	TO-3	60	60	10	12	36	3	1	.75	1.8	1	.14	2.3	60
2N3173	TO-3	80	80	10	12	36	3	1	.75	1.8	1	.14	2.3	60
2N3174	TO-3	100	100	10	12	36	3	1	.75	1.8	1	.14	2.3	60
2N3175	TO-61	40	40	10	10	30	3	2	1	2	2	.3	2	60
2N3176	TO-61	60	60	10	10	30	3	2	1	2	2	.3	2	60
2N3177	TO-61	80	80	10	10	30	3	2	1	2	2	.3	2	60
2N3178	TO-61	100	100	10	10	30	3	2	1	2	2	.3	2	60
2N3183	TO-3	40	40	10	10	30	3	2	1	2	2	.3	2.3	60
2N3184	TO-3	60	60	10	10	30	3	2	1	2	2	.3	2.3	60
2N3185	TO-3	80	80	10	10	30	3	2	1	2	2	.3	2.3	60
2N3186	TO-3	100	100	10	10	30	3	2	1	2	2	.3	2.3	60
2N3187	TO-61	40	40	10	10	30	3	3	.9	1.9	3	.6	2	60
2N3188	TO-61	60	60	10	10	30	3	3	.9	1.9	3	.6	2	60
2N3189	TO-61	80	80	10	10	30	3	3	.9	1.9	3	.6	2	60
2N3190	TO-61	100	100	10	10	30	3	3	.9	1.9	3	.6	2	60
2N3195	TO-3	40	40	10	10	30	3	3	.9	1.9	3	.6	2.3	60
2N3196	TO-3	60	60	10	10	30	3	3	.9	1.9	3	.6	2.3	60
2N3197	TO-3	80	80	10	10	30	3	3	.9	1.9	3	.6	2.3	60
2N3198	TO-3	100	100	10	10	30	3	3	.9	1.9	3	.6	2.3	60
2N3202	TO-5	40	40	10	20	60	2	1	.3	1.3	1	.1	25	60
2N3203	TO-5	60	60	10	20	60	2	1	.3	1.3	1	.1	25	60
2N3204	TO-5	80	80	10	20	60	2	1	.3	1.3	1	.1	25	60
2N3719	TO-5	40	40	4	25	180	1	1	1.5	2.3	3	.3	25	60
2N3720	TO-5	60	60	4	25	180	1	1	1.5	2.3	3	.3	25	60
2N3867	TO-5	45	40	4	40	200	2	1.5	.7	1.4	1.5	.15	25	60
2N3868	TO-5	65	60	4	30	150	2	1.5	.7	1.4	1.5	.15	25	60
2N4999	TO-111/1	100	80	5.5	30	90	5	1	.85	1.5	2	.2	3.33	60
2N5001	TO-111/1	100	80	5.5	70	200	5	1	.85	1.5	2	.2	3.33	60
2N5003	TO-111/1	100	80	5.5	30	90	5	2.5	1.5	2.2	5	.5	3	50
2N5005	TO-111/1	100	80	5.5	70	200	5	2.5	1.5	2.2	5	.5	3	50
2N5147	TO-5	100	80	5.5	30	90	5	1	.85	1.5	2	.2	25	50
2N5149	TO-5	100	80	5.5	70	200	5	1	.85	1.5	2	.2	25	60
2N5286	TO-111/1	120	100	5.5	30	90	5	2.5	1.5	2.2	5	.5	3	50
2N5287	TO-111/1	120	100	5.5	70	200	5	2.5	1.5	2.2	5	.5	3	50
2N5333	TO-5	100	80	6	30	120	4	1	1	1.5	2	.2	25	60
2N5384	TO-111/1	100	80	6	20	80	4	2	.6	1.5	2	.2	3.33	60
2N5385	TO-111	100	80	6	20	80	4	2	.6	1.5	2	.2	3.3	60
2N5404	TO-5	80	80	6	20	60	5	2	.6	1.2	2	.2	25	60
2N5405	TO-5	100	100	6	20	60	5	2	.6	1.2	2	.2	25	60
2N5406	TO-5	80	80	6	40	120	5	2	.6	1.2	2	.2	25	60
2N5407	TO-5	100	100	6	40	120	5	2	.6	1.2	2	.2	25	60
2N5408	TO-111/1	80	80	6	20	60	5	2	.6	1.2	2	.2	3.33	60
2N5409	TO-111/1	100	100	6	20	60	5	2	.6	1.2	2	.2	3.33	60
2N5410	TO-111/1	80	80	6	40	120	5	2	.6	1.2	2	.2	3.33	60
2N5411	TO-111/1	100	100	6	40	120	5	2	.6	1.2	2	.2	3.33	60
2N5597	TO-66	80	60	5.5	70	200	5	1	.85	1.5	2	.2	6	60
2N5599	TO-66	100	80	5.5	30	90	5	1	.85	1.5	2	.2	6	60
2N5601	TO-66	100	80	5.5	70	200	5	1	.85	1.5	2	.2	6	60
2N5603	TO-66	120	100	5.5	30	90	5	1	.85	1.5	2	.2	6	60
2N5605	TO-66	80	60	5.5	70	200	5	2.5	.75	1.45	2.5	.25	6	60
2N5607	TO-66	100	80	5.5	30	90	5	2.5	.75	1.45	2.5	.25	6	50
2N5609	TO-66	100	80	5.5	70	200	5	2.5	.75	1.45	2.5	.25	6	50
2N5611	TO-66	120	100	5.5	30	90	5	2.5	.75	1.45	2.5	.25	6	50
2N5613	TO-3	80	60	5.5	70	200	5	2.5	1.5	2.2	5	.5	3	50
2N5615	TO-3	100	80	5.5	30	90	5	2.5	1.5	2.2	5	.5	3	50
2N5617	TO-3	100	80	5.5	70	200	5	2.5	1.5	2.2	5	.5	3	50
2N5619	TO-3	120	100	5.5	30	90	5	2.5	1.5	2.2	5	.5	3	50

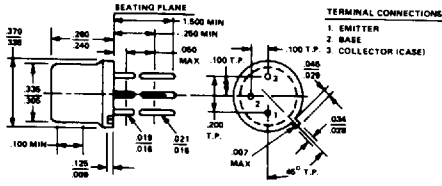
# PHYSICAL DIMENSIONS - PACKAGES



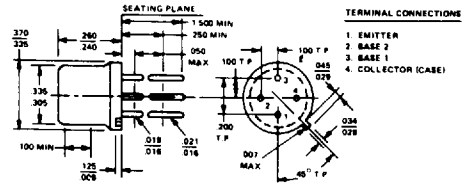
TO-46



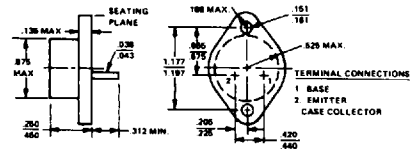
TO-8



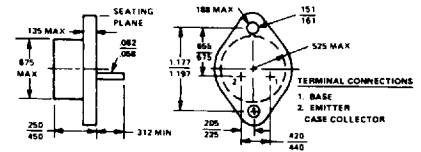
TO-5



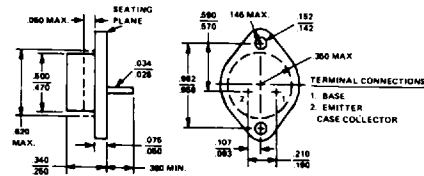
TO-33



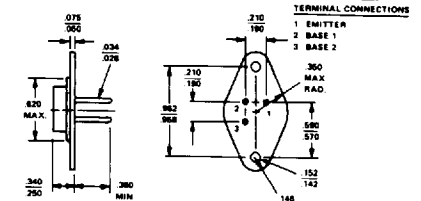
TO-3



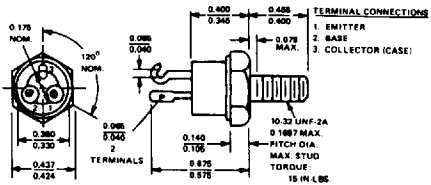
TO-3 (60 mil pins)



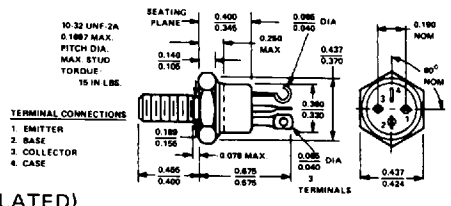
TO-66



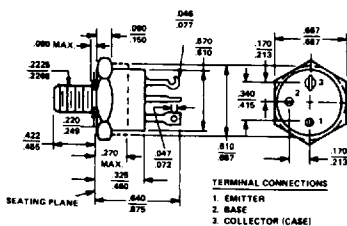
3 PIN TO-66



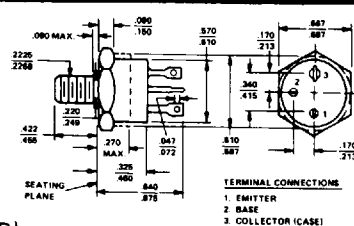
TO-111



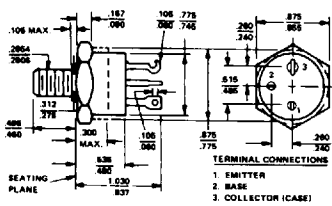
TO-111 (ISOLATED)



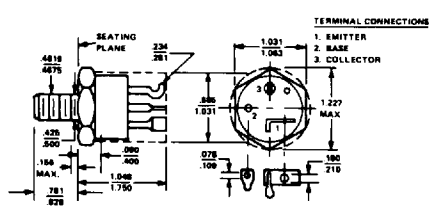
TO-61



TO-61 (ISOLATED)



TO-63



TO-114

ALL DIMENSIONS IN INCHES