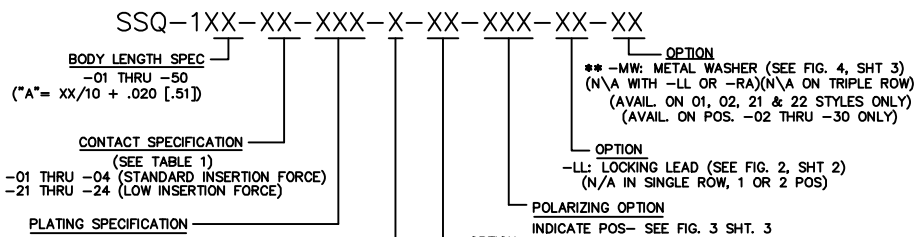
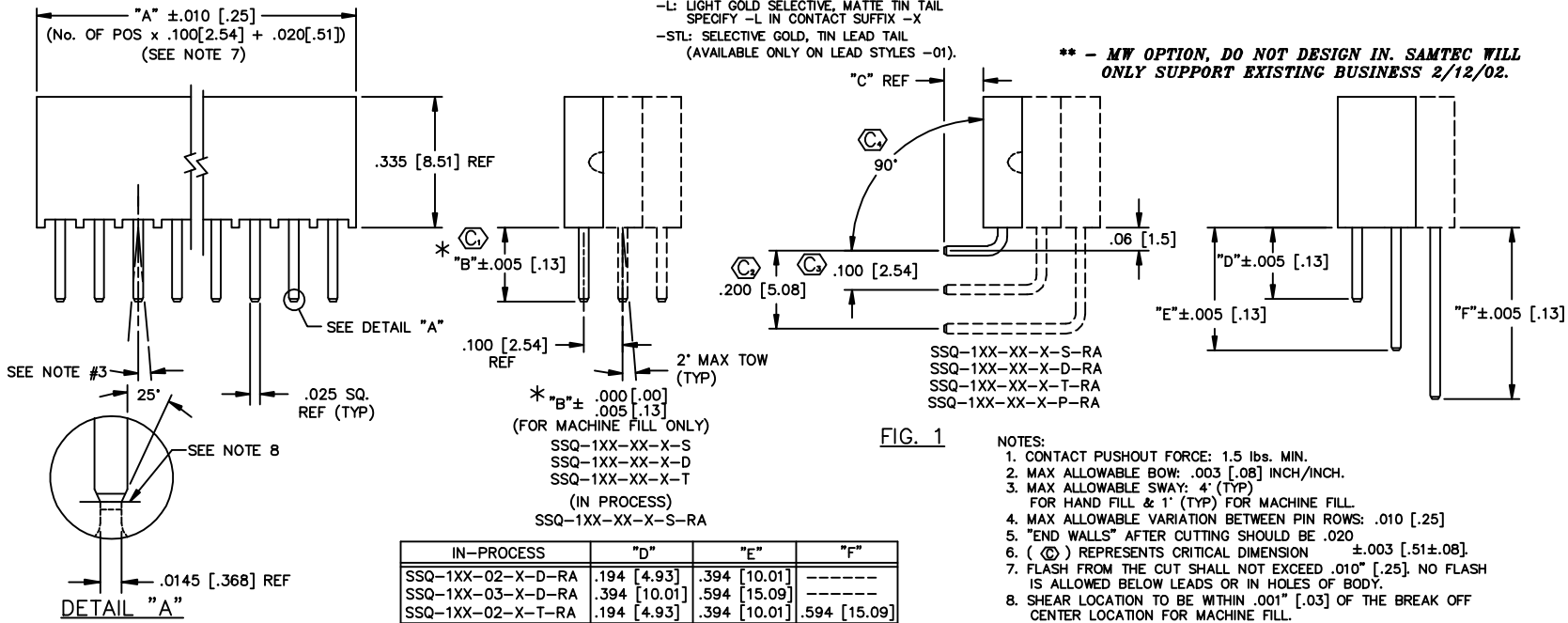


DO NOT SCALE FROM THIS PRINT

	-XX	-S, -D, -T	-S-RA	-D-RA	-T-RA
-01	C-15-1-X	N/A	N/A	N/A	N/A
-02	C-15-2-X	C-15-2-X	C-15-2-X	C-15-2-X	C-15-2-X
				C-15-3-X	C-15-3-X
				C-15-4-X	N/A
-03	C-15-3-X	C-15-3-X	C-15-3-X	C-15-3-X	N/A
				C-15-4-X	N/A
-04	C-15-4-X	C-15-4-X	N/A	N/A	N/A
-21	C-60-1-X	N/A	N/A	N/A	N/A
-22	C-60-2-X	C-60-2-X	C-60-2-X	C-60-2-X	C-60-2-X
				C-60-3-X	C-60-3-X
				C-60-4-X	C-60-4-X
-23	C-60-3-X	C-60-3-X	C-60-3-X	C-60-3-X	N/A
				C-60-4-X	N/A
-24	C-60-4-X	C-60-4-X	N/A	N/A	N/A



- G: GOLD- SPECIFY -G IN CONTACT SUFFIX -XX
- T: TIN- SPECIFY -T IN CONTACT SUFFIX -XX (NOT AVAILABLE FOR -21 THROUGH -24 LEAD STYLES)
- S: SELECTIVE(HEAVY GOLD), MATTE IN TAIL-SPECIFY -S IN CONTACT SUFFIX -XX
- H: HEAVY GOLD- SPECIFY -H IN CONTACT SUFFIX -XX
- F: FLASH GOLD SELECTIVE, MATTE TIN TAIL (SEE PP-C-15-X-F)
- TL: TIN/LEAD -SPECIFY -TL IN TERMINAL SUFFIX -XX (AVAILABLE ONLY ON LEAD STYLES -01.)
- TM: MATTE TIN SPECIFY -T IN CONTACT SUFFIX -X
- SM: HEAVY GOLD SELECTIVE, MATTE TIN TAIL, SPECIFY -S IN CONTACT SUFFIX -X
- FM: FLASH GOLD SELECTIVE, MATTE TIN TAIL SPECIFY -F IN CONTACT SUFFIX -X
- L: LIGHT GOLD SELECTIVE, MATTE TIN TAIL SPECIFY -L IN CONTACT SUFFIX -X
- STL: SELECTIVE GOLD, TIN LEAD TAIL (AVAILABLE ONLY ON LEAD STYLES -01.)
- OPTION ** -MW: METAL WASHER (SEE FIG. 4, SHT 3) (N/A WITH -LL OR -RA)(N/A ON TRIPLE ROW) (AVAIL. ON 01, 02, 21 & 22 STYLES ONLY) (AVAIL. ON POS. -02 THRU -30 ONLY)
- OPTION -LL: LOCKING LEAD (SEE FIG. 2, SHT 2) (N/A IN SINGLE ROW, 1 OR 2 POS)
- POLARIZING OPTION INDICATE POS- SEE FIG. 3 SHT. 3
- OPTION -RA: RIGHT ANGLE (SEE FIG. 1) (CONTACT -01 N/A)
- BODY SPECIFICATION
 - S: USE SSW-XX-S
 - D: USE SSW-XX-D
 - T: USE SSW-XX-T
 - Q: USE SSW-50-T (TRIPLE ROW WITH ONLY 2 OUTER ROWS FILLED)
 - P: USE SSW-XX-P



- NOTES:
- CONTACT PUSHOUT FORCE: 1.5 lbs. MIN.
 - MAX ALLOWABLE BOW: .003 [.08] INCH/INCH.
 - MAX ALLOWABLE SWAY: 4' (TYP) FOR HAND FILL & 1' (TYP) FOR MACHINE FILL.
 - MAX ALLOWABLE VARIATION BETWEEN PIN ROWS: .010 [.25]
 - "END WALLS" AFTER CUTTING SHOULD BE .020
 - (⊙) REPRESENTS CRITICAL DIMENSION ±.003 [.51±.08]
 - FLASH FROM THE CUT SHALL NOT EXCEED .010" [.25]. NO FLASH IS ALLOWED BELOW LEADS OR IN HOLES OF BODY.
 - SHEAR LOCATION TO BE WITHIN .001" [.03] OF THE BREAK OFF CENTER LOCATION FOR MACHINE FILL.
 - NOTCH ON -P-RA OPTION TO BE ORIENTED AS SHOWN.

CONTACT	"B"		"C" REF		
	-S(-RA), -D, -T	-S-RA	-D-RA	-T-RA	
-01, -21	.104 [2.64]	N/A	N/A	N/A	
-02, -22	.194 [4.93]	.100 [2.54]	.100 [2.54]	.100 [2.54]	
-03, -23	.394 [10.01]	.300 [7.62]	.300 [7.62]	N/A	
-04, -24	.584 [14.83]	.490 [12.45]	N/A	N/A	

PROPRIETARY NOTE
THIS DOCUMENT CONTAINS INFORMATION CONFIDENTIAL AND PROPRIETARY TO SAMTEC INC. AND SHALL NOT BE REPRODUCED OR TRANSMITTED IN ANY FORM OR BY ANY MEANS, ELECTRONIC OR MECHANICAL, INCLUDING PHOTOCOPYING, RECORDING, OR BY ANY INFORMATION STORAGE AND RETRIEVAL SYSTEM, WITHOUT THE EXPRESS WRITTEN CONSENT OF SAMTEC INC.

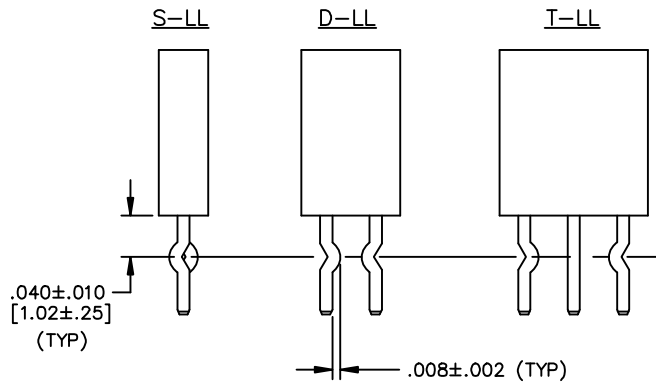
MATERIAL:
INSULATOR:
PRIMARY MATERIAL: LCP
COLOR: BLACK

TERMINAL:
PHOSPHOR BRONZE

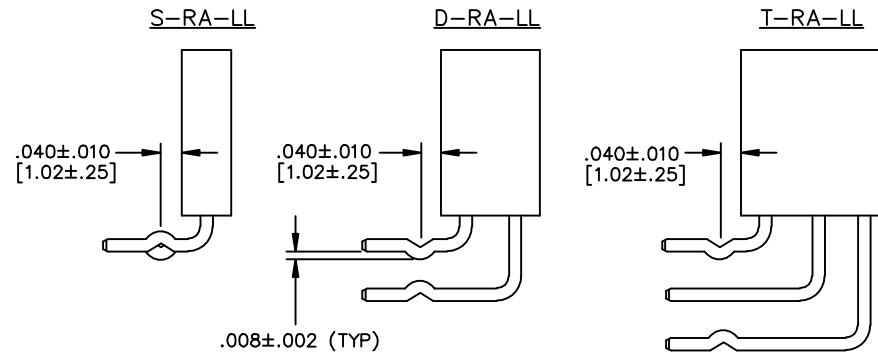
EXISPROD\ASSEMBLY\100
SSQ-ASM
samtec
520 PARK EAST BLVD. NEW ALBANY, INDIANA 47150
PHONE (812) 944-6733 P.O. BOX 1147
CODE 55322

-LL: LOCKING LEAD OPTION

DIMENSIONS ARE IN INCHES		UNLESS OTHERWISE NOTED	TOLERANCES ARE:	TITLE: ASSEMBLY, SOCKET STRIP .025 [.64] SQ. TAIL	DWG NO: SSQ-1XX-XX-XXX-X-XX-XXX-XX-XX
ONE PLACE DECIMALS ±	TWO PLACE DECIMALS ±	THREE PLACE DECIMALS ± .010 [.25]	FOUR PLACE DECIMALS ± .0050 [.127]	ANGLES ± 2°	SHEET 2 OF 3

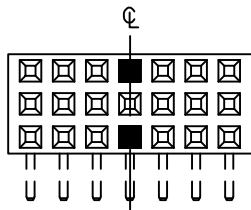


STRAIGHT VERSION

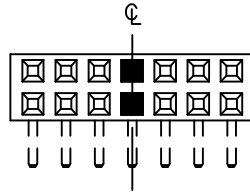


RIGHT ANGLE VERSION

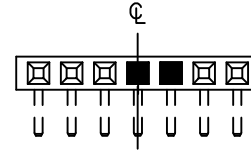
CRIMP LOCATION
(STRAIGHT & RA VERSIONS)



TRIPLES:

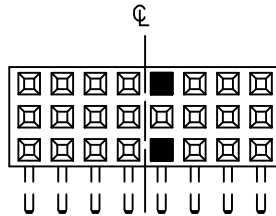


DOUBLES:

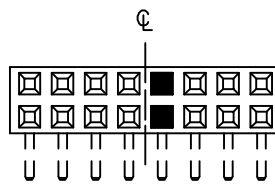


SINGLES:

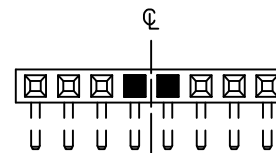
■ = CRIMP LOCATION
ODD POSITIONS



TRIPLES:



DOUBLES:



SINGLES:

■ = CRIMP LOCATION
EVEN POSITIONS

PROPRIETARY NOTE
THIS DOCUMENT CONTAINS INFORMATION CONFIDENTIAL AND PROPRIETARY TO SAMTEC INC. AND SHALL NOT BE REPRODUCED OR TRANSMITTED TO OTHER DOCUMENTS OR DISCLOSED TO OTHERS OR USED FOR ANY PURPOSE OTHER THAN THAT FOR WHICH IT WAS OBTAINED WITHOUT THE EXPRESSED WRITTEN CONSENT OF SAMTEC INC.

PLOT SCALE: 1 = .2

samtec

520 PARK EAST BLVD. NEW ALBANY, INDIANA 47150
PHONE (812) 944-6733 P.O. BOX 1147
CODE 55322

MADE BY: PURVIS 6-12-87

SSQ-1XX-XX-XXX-X-XX-XXX-XX-XX
SHEET 2 OF 3

DIMENSIONS ARE IN INCHES		UNLESS OTHERWISE NOTED	TOLERANCES ARE:
ONE PLACE DECIMALS ±	THREE PLACE DECIMALS ±	.010 [.25]	ANGLES ±2°
TWO PLACE DECIMALS ±	FOUR PLACE DECIMALS ±	.0050 [.127]	

TITLE: ASSEMBLY, SOCKET STRIP
.025 [.64] SQ. TAIL

DWG NO: SSQ-1XX-XX-XXX-X-XX-XXX-XX-XX
SHEET 3 OF 3

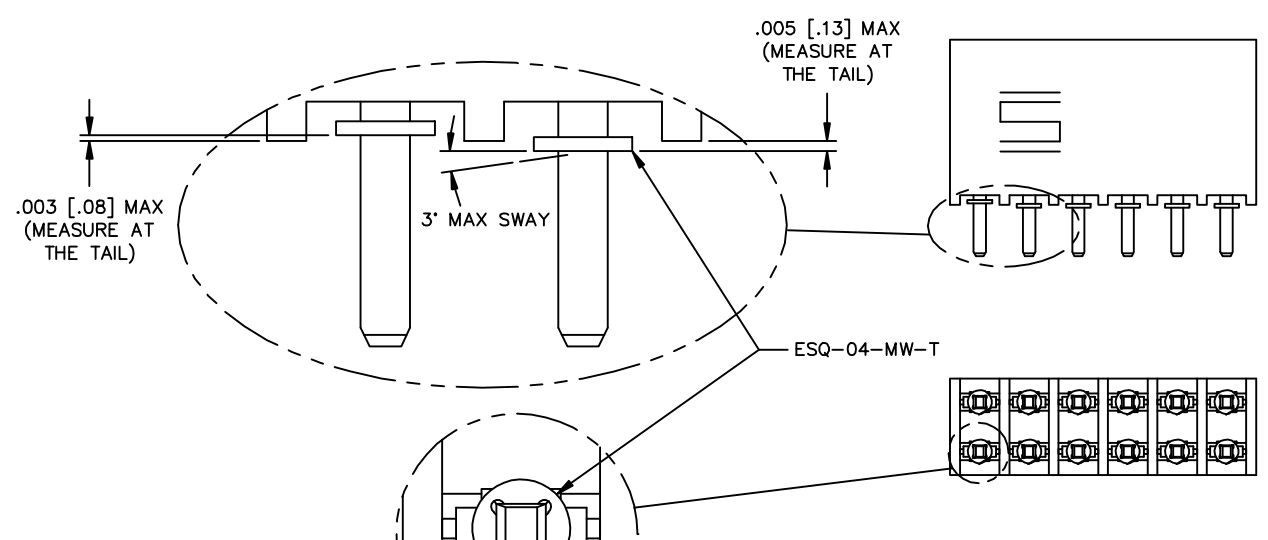
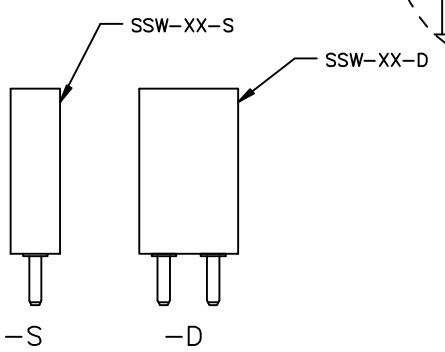
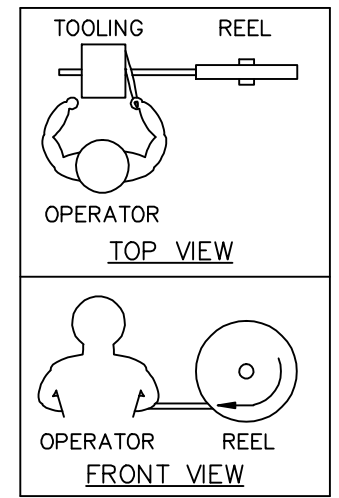


FIG. 4
 ** -MW: METAL WASHER (ONE PER POSITION)
 (N/A ON -LL OR -RA OPTION)
 (N/A ON TRIPLE ROW)
 (STYLES -01, -02, -21 AND -22 ONLY)
 (AVAILABLE ON POS. -02 THRU -30 ONLY)

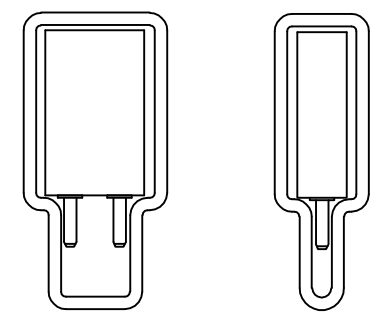


**** - MW OPTION, DO NOT DESIGN IN. SAMTEC WILL ONLY SUPPORT EXISTING BUSINESS 2/12/02.**



WASHER REEL ASSEMBLY ORIENTATION VIEW

FOR MEDAL WASHER OPTION ONLY
 USE TUBE- PT-1-24-02-53 FOR DOUBLE
 USE TUBE- PT-1-24-01-53 FOR SINGLE



PLOT SCALE: 1 = .2

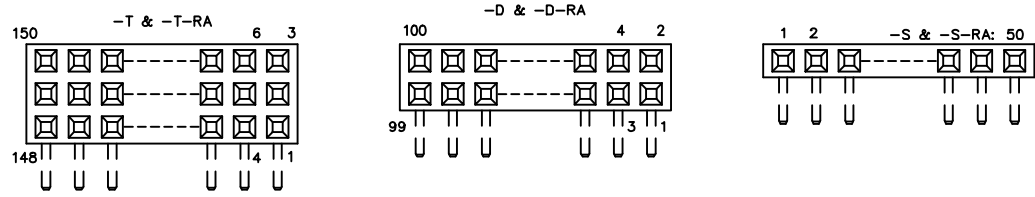


FIG. 3
 POLARIZATION LOCATION
 INSERT PK-06-N INTO SPECIFIED POS AND BREAK OFF TAB

PROPRIETARY NOTE
 THIS DOCUMENT CONTAINS INFORMATION CONFIDENTIAL AND PROPRIETARY TO SAMTEC INC. AND SHALL NOT BE REPRODUCED OR TRANSFERRED TO OTHER DOCUMENTS OR DISCLOSED TO OTHERS OR USED FOR ANY PURPOSE OTHER THAN THAT FOR WHICH IT WAS OBTAINED WITHOUT THE EXPRESSED WRITTEN CONSENT OF SAMTEC INC.

EXISPROD\ASSEMBLY\100
 SSQ-ASM3

samtec

520 PARK EAST BLVD. NEW ALBANY, INDIANA 47150
 PHONE (812) 944-6733 P.O. BOX 1147
 CODE 55322

MADE BY: PURVIS 6-12-87

SSQ-1XX-XX-XXX-X-XX-XXX-XX-XX
 SHEET 3 OF 3