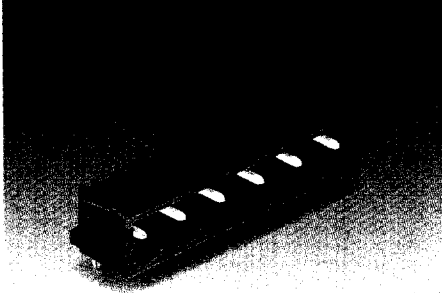
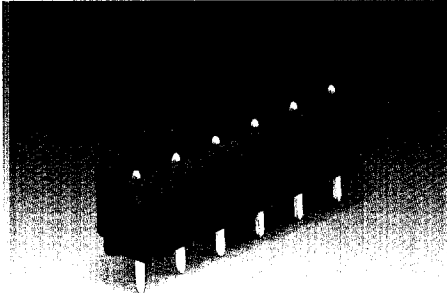


# 5 Headers with Solder Pins, Pin Spacing 7.62 mm / 0.3 in, orange

70

<p>Pin spacing 7.62 mm / 0.3 in, orange Straight solder pin 400 V/6 kV/3   300 V, 10 A ① ② 12 A ①/16 A ②   300 V, 15 A ② ③ 300 V, 15 A ③</p> <p>Mating direction perpendicular to PCB * ① ② ③ ④ ⑤ ⑥ ⑦ ⑧ ⑨ ⑩ ⑪ ⑫ BV NV ⑬ ⑭ ⑮</p>	<p>Pin spacing 7.62 mm / 0.3 in, orange Right angle solder pin 400 V/6 kV/3   300 V, 10 A ① ② 12 A ①/16 A ②   300 V, 15 A ② ③ 300 V, 15 A ③</p> <p>Mating direction parallel to PCB * ① ② ③ ④ ⑤ ⑥ ⑦ ⑧ ⑨ ⑩ ⑪ ⑫ BV NV ⑬ ⑭ ⑮</p>	
---	---	--

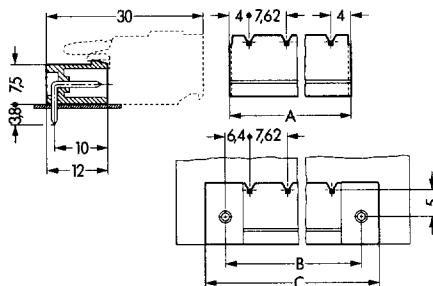
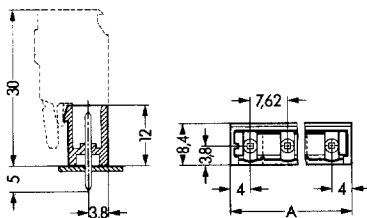


No. of poles	Item-No.	Item-No.	No. of poles	Item-No.	Item-No.
Closed end headers, orange, straight solder pin			Closed end headers, orange, right angle solder pin		
	1 x 1 mm ①	1.2 x 1.2 mm ②		1 x 1 mm ①	1.2 x 1.2 mm ②
2	231-732/001-000	231-762/001-000	2	231-932/001-000	231-962/001-000
3	231-733/001-000	231-763/001-000	3	231-933/001-000	231-963/001-000
4	231-734/001-000	231-764/001-000	4	231-934/001-000	231-964/001-000
5	231-735/001-000	231-765/001-000	5	231-935/001-000	231-965/001-000
6	231-736/001-000	231-766/001-000	6	231-936/001-000	231-966/001-000
7	231-737/001-000	231-767/001-000	7	231-937/001-000	231-967/001-000
8	231-738/001-000	231-768/001-000	8	231-938/001-000	231-968/001-000
9	231-739/001-000	231-769/001-000	9	231-939/001-000	231-969/001-000
10	231-740/001-000	231-770/001-000	10	231-940/001-000	231-970/001-000
11	231-741/001-000	231-771/001-000	11	231-941/001-000	231-971/001-000
12	231-742/001-000	231-772/001-000	12	231-942/001-000	231-972/001-000

### Accessories (please refer to remarks concerning coding on page 5.75)

	<b>Coding key</b> , snap-on type, light grey 231-130		<b>Coding key</b> , snap-on type, light grey 231-130
	<b>Separator</b> , for formation of groups, light grey 231-500		<b>Separator</b> , for formation of groups, light grey 231-500
			<b>Fixing element, horizontal</b> , orange 231-393
			<b>Screw M 2 x 12 with nut</b> 231-195 for fixing element
			<b>Tapping Screw</b> , B 2.2 x 13 231-194 fixing hole Ø 1.8 mm

**Dimensions (in mm)** Diameter of drilled hole: 1.4<sup>+0.1</sup> mm (solder pin 1 x 1 mm); 1.7<sup>+0.1</sup> mm (solder pin 1.2 x 1.2 mm)



A = (No. of poles - 1) x pin spacing + 8 mm

A = (No. of poles - 1) x pin spacing + 8 mm  
B = A + 5.08 mm; C = B + 7.4 mm

\* For international approvals (with corresponding ratings) see pages 10.3 - 10.38.

**Note:** These connectors can only be mated and unmated at voltages below 42 V and in the "No load" condition.  
For mating and unmating at low power values, please request data.