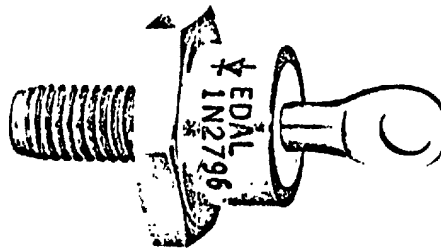
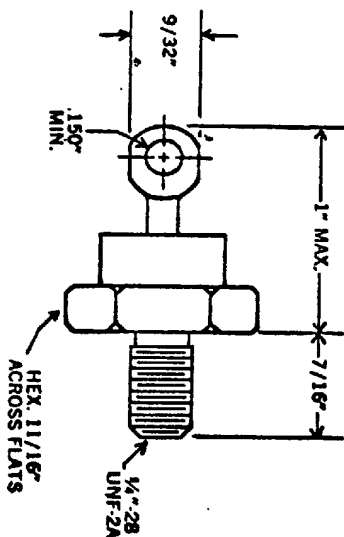


T-01-19 -



B_v _____
PIV See Table
I_o 10 A @ 110 °C Case
I_s 200 AMPS
V_f 1.1 v @ 100 A @ 25 °C
I_r I_r @ PIV @ 175 °C
 @ _____ @ _____

Datasheet Directory

STYLE DO-5

STAMP Edal. P/N

EQUIV. TO F5 **EXCEPT** _____

P/N	PIV (VOLTS)	I _r (mA)
1N1183A	50	5
1N1184A	100	5
1N1185A	150	5
1N1186A	200	5
1N1187A	300	2.5
1N1188A	400	2.2
1N1189A	500	2.0
1N1190A	600	1.8

Note: Add R after P/N to denote reverse polarity

REV.	DESCRIPTION	BY	DATE

EDAL INDUSTRIES INC.		DRAWN	APP	DATE
EAST HAVEN, CONN. 06512		DV	<i>[Signature]</i>	6/2/72
TOLERANCES UNLESS OTHERWISE NOTED				
		FRACTIONS ±		DECIMALS ±
TITLE		DWG. NO.		
SILICON RECTIFIER		1N1183A - 1N1190A		

9000-4150