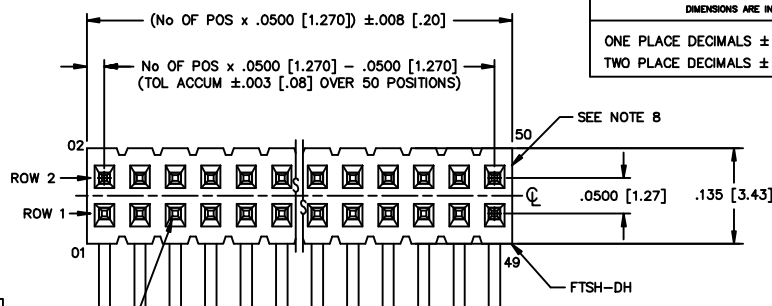


REV. Q

UNLESS OTHERWISE NOTED	
DIMENSIONS ARE IN INCHES	TOLERANCES ARE:
ONE PLACE DECIMALS $\pm .1$ [.254]	THREE PLACE DECIMALS $\pm .005$ [.127]
TWO PLACE DECIMALS $\pm .01$ [.25]	FOUR PLACE DECIMALS $\pm .0010$ [.0254]

TITLE:	.050 x .050 DUAL TERMINAL ASSEMBLY MIXED TECHNOLOGY
--------	---

DWG NO: FTSH-1XX-XX-XX-MT-XX  
SHEET 1 OF 1



DO NOT SCALE  
FROM THIS PRINT

FTSH-1XX-XX-XX-MT-XX

No OF POS. PER ROW  
-02 THRU -50  
(SEE NOTE 2 & 5)

— PACKAGING  
—TR: TAPE AND REEL  
—MIXED TECHNOLOGY

## LEAD STYLE

-01: "A" = .120 [3.05]  
-02: "A" = .075 [1.91]  
-04: "A" = .150 [3.81]  
(SEE TABLE 1 FOR  
TERMINAL USAGE)

## PLATING

- L: LIGHT SELECTIVE  
(USE T-1S15-04-L & T-1S15-03-L)
- F: FLASH SELECTIVE  
(USE T-1S15-04-F & T-1S15-03-F)
- S: SELECTIVE GOLD  
(USE T-1S15-04-S & T-1S15-03-S)
- H: HEAVY GOLD  
(USE T-1S15-04-H & T-1S15-03-H)
- SM: HEAVY SELECTIVE GOLD, MATTE TIN TAIL  
(USE T-1S15-04-S & T-1S15-03-S)
- LM: LIGHT SELECTIVE GOLD, MATTE TIN TAIL  
(USE T-1S15-04-L & T-1S15-03-L)
- FM: FLASH SELECTIVE GOLD, MATTE TIN TAIL  
(USE T-1S15-04-F & T-1S15-03-F)
- TM: MATTE TIN (USE T-1S15-04-T & T-1S15-03-T)

NOTES:

1. TERMINALS TO BE SHEARED TO MEET DIMENSION SPECIFICATION.
2. PARTS MAY BE CUT TO POSITION.
3. MINIMUM PUSHOUT FORCE: .5 LB.
4. MAXIMUM TOP / BOTTOM BOW: .004 [-.10].
5. SEE PACKAGING TABLE 2.
6. **Ⓢ** REPRESENTS A CRITICAL DIMENSION
7. .002 MAX BURR ALLOWED.
8. .015 MAX CUT FLASH ALLOWED.
9. PINS 2 TO BE FLUSH TO .003 ABOVE OR BELOW LINE MADE BY BODY.

TABLE 1			
LEAD STYLE	"A"	ROW 1	ROW 2
-01	.120±.005 [3.05±.13]	T-1S15-04-XX	T-1S15-03-XX
-02	.075±.005 [1.91±.13]	T-1S15-04-XX	T-1S15-03-XX
-04	.150±.005 [3.81±.13]	T-1S15-04-XX	T-1S15-03-XX

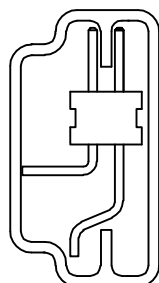
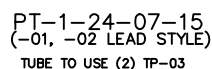
LEAD STYLE	NO. OF POS	PACKAGING
-01	-02 THRU -04	TAPE & REEL
-01	-05 THRU -50	PT-1-24-07-15
-02	-02 THRU -05	TAPE & REEL
-02	-06 THRU -50	PT-1-24-07-15
-04	-02 THRU -03	TAPE & REEL
-04	-04 THRU -50	PT-MM1001-DH-

PLOT SCALE: 1=1.3125/ DIM SCALE: 1=.100

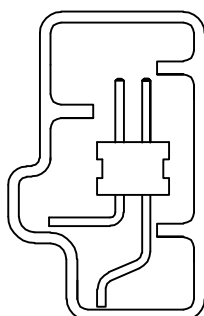
**samtec**

520 PARK EAST BLVD. NEW ALBANY, INDIANA 47150  
PHONE (812) 944-6733 P.O. BOX 1147  
CODE 55322

MADE BY:		PURVIS 07-29-96	FTSH-1XX-XX-XX-MT-XX
			SHEET 1 OF 1



PT-MMT001-DH-P  
(-04 LEAD STYLE)  
TUBE TO USE (2) TP-09



**PROPRIETARY NOTE**  
THIS DOCUMENT CONTAINS INFORMATION  
CONFIDENTIAL AND PROPRIETARY TO  
SAMTEC INC. AND SHALL NOT BE  
REPRODUCED OR TRANSFERRED TO  
OTHER DOCUMENTS OR DISCLOSED TO  
OTHERS OR USED FOR ANY PURPOSE  
OTHER THAN THAT FOR WHICH IT WAS  
OBTAINED WITHOUT THE EXPRESSED  
WRITTEN CONSENT OF SAMTEC INC.

