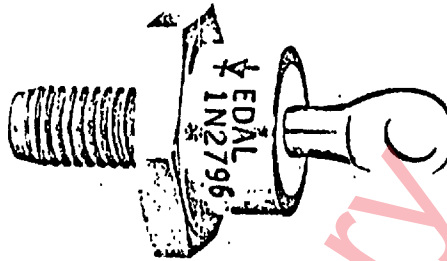
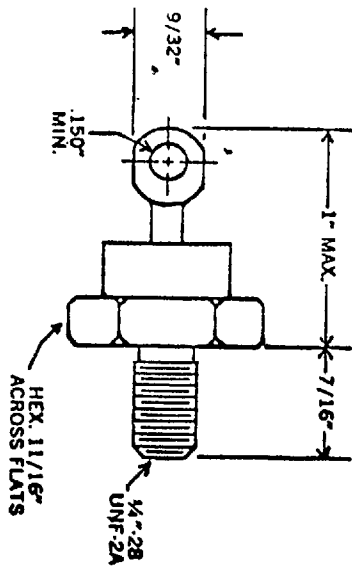


T-01-19



B_v	_____				
PIV	See Table				
I_o	35 A	@	140		Case
I_s	500		AMPS		
V_f	1.7	v @	35A	@	140 Case
I_r	10 mA	@	PIV	@	140 Case
	2 mA	@	PIV	@	25 Case

STYLE DO-5

STAMP Edal P/N

EQUIV. TO _____ **EXCEPT** _____

<u>P/N</u>	<u>PIV (VOLTS)</u>
1N1183	50
1N1184	100
1N1185	150
1N1186	200
1N1187	300
1N1188	400
1N1189	500
1N1190	600

Note: Add R after P/N to denote reverse polarity

REV.	DESCRIPTION	BY	DATE

EDAL INDUSTRIES INC. EAST HAVEN, CONN. 06512		DRAWN	APP	DATE
		DV	<i>[Signature]</i>	6/2/72
TOLERANCES UNLESS OTHERWISE NOTED				
FRACTIONS ±		DECIMALS ±		
TITLE		DWG. NO.		
SILICON RECTIFIER		1N1183 - 1N1190		

9000-4149