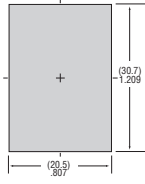


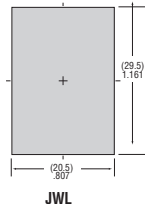
JW Series 10 A and 16 A Rocker Switches Available with IP67 Rating



JWLW21R1A



JWL21RC2A



The snap-in mounted JW Series rockers are designed to handle large amounts of inrush currents. JWM models are certified for TV-5 rating JWL models for TV-8. This series has UL, CSA and VDE approvals. Terminals are molded in and epoxy sealed to lock out flux, dust and other contaminants. They are specially designed to break light contact welds.

The JW family of switches has several distinctive and unique features. All versions are constructed for dust resistance with an interior seal of polyphenylene sulfide (PPS) between the actuator and contact area. Prominent external insulating barriers increase the insulation resistance and dielectric strength. JWMW and JWLW models are IP67 of IEC60529 standard for panel seal.

- Features:**
- ▶ Snap-in Mounting, Quick Connect Terminals
 - ▶ Electrical Capacity (JWM and JWMW): 10 A @ 125/250 VAC; (JWMW): 10 A @ 30 VDC
 - ▶ Electrical Capacity (JWL and JWLW): 16 A @ 125/250 VAC; 5 A @ 72 VDC for Telecommunications Applications
 - ▶ Dielectric Strength: 2,000 VAC Minimum Between Contacts for 1 Minute Minimum
 - ▶ Mechanical Life: 25,000 Operations Minimum
 - ▶ Electrical Life: 25,000 Operations Minimum
 - ▶ Operating Temperature (JWM and JWL): -25°C ~ +70°C (-13°F ~ +158°F)
 - ▶ Operating Temperature (JWMW and JWLW): -25°C ~ +85°C (-13°F ~ +185°F)
 - ▶ Maximum Panel Thickness: 0.157"
 - ▶ Sealing (JWMW and JWLW): IP67 of IEC60529 Standard for Panel Seal

- Specifications:**
- ▶ JWM and JWMW Are TV-5 Rated. JWL and JWLW Are TV-8 Rated
 - ▶ All Series Are UL Recognized and VDE Approved (See NKK's Catalog for Specifications)
 - ▶ JWL, JWM and JWMW Series Are Also CSA Certified

JWL Series

Stock No.	Mfr.'s Type	Contact Form	Circuits	Cap Color	Inscription	EACH		
						1-24	25-49	50+
70234674	JWL11RA1A	SPST	On-None-Off	Black	Horizontal	7.85	7.20	6.65
70234675	JWL11RA2A	SPST	On-None-Off	Black	Vertical	7.85	7.20	6.65
70192008	JWL21BA2A-A	DPST	On-None-Off	Black	Vertical	10.64	10.11	9.50
70234676	JWL21RA1A	DPST	On-None-Off	Black	Horizontal	10.40	9.53	8.80
70234677	JWL21RA2A	DPST	On-None-Off	Black	Vertical	10.40	9.53	8.80
70191988	JWL21RAA	DPST	On-None-Off	Black	None	9.04	8.75	8.49
70234678	JWL21RC2A	DPST	On-None-Off	Red	Vertical	10.40	9.53	8.80
70234679	JWL22RAA	DPDT	On-None-On	Black	None	11.71	10.73	9.91

JWLW Series

Stock No.	Mfr.'s Type	Contact Form	Circuits	Barrier Color	Inscription	EACH		
						1-24	25-49	50+
70234770	JWLW21RA1A	DPST	On-None-Off	Black	Horizontal	11.40	10.45	9.65
70234771	JWLW21RC1A	DPST	On-None-Off	Red	Horizontal	11.40	10.45	9.65
70234772	JWLW22RAA	DPDT	On-None-On	Black	None	12.71	11.65	10.75
70234773	JWLW22RAA	DPDT	On-None-On	Red	None	12.71	11.65	10.75

JWMW Series

Stock No.	Mfr.'s Type	Contact Form	Circuits	Barrier Color	Inscription	EACH		
						1-24	25-49	50+
70234766	JWMW11RA1A	SPST	On-None-Off	Black	Horizontal	7.15	6.55	6.05
70234767	JWMW11RA2A	SPST	On-None-Off	Black	Vertical	7.15	6.55	6.05
70234768	JWMW11RAA	SPST	On-None-Off	Black	None	6.20	5.68	5.25
70234769	JWMW21RA1A	DPST	On-None-Off	Black	Horizontal	8.85	8.12	7.49
70192998	JWMW21RA2A	DPST	On-None-Off	Black	Vertical	8.85	8.31	7.70

JWM Series

Stock No.	Mfr.'s Type	Contact Form	Barrier Color	Inscription	EACH		
					1-24	25-49	50+
70234774	JWM11BA1A-A	SPST	Black	Horizontal	7.15	6.55	6.05
70234775	JWM11BA2A-A	SPST	Black	Vertical	7.15	6.55	6.05
70234760	JWM11RA1A	SPST	No Barrier	Horizontal	6.15	5.63	5.20
70191987	JWM11RA2A	SPST	No Barrier	Vertical	5.92	5.72	5.53
70234761	JWM11RAA	SPST	No Barrier	None	5.20	4.77	4.40
70234762	JWM21BA2A-A	DPST	Black	Vertical	8.85	8.12	7.49
70234763	JWM21RA1A	DPST	No Barrier	Horizontal	7.85	7.20	6.65
70234764	JWM21RA2A	DPST	No Barrier	Vertical	7.85	7.20	6.65
70234765	JWM22RAA	DPDT	No Barrier	None	8.15	7.47	6.89

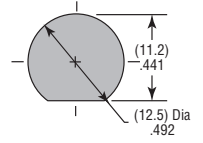
Sealed Toggle Switches — WT Series

Product Description: For use in outdoor or harsh applications. Single and double pole. Solder lug, screw lug or wire-lead terminals. **Electrical Capacity:** 10 A @ 125 VAC or 6 A @ 250 VAC or 10 A @ 30 VDC. **Dielectric Strength:** 1500 VAC min. for 1 minute min. **Mechanical Life:** 50,000 Operations min. **Electrical Life:** 15,000 Operations min. **Operating Temperature:** -30°C to +70°C. **Max. Panel Thickness:** 0.157". **Hardware:** 1 Hex nut, 1 locking ring, 1 o-ring.

- Features**
- ▶ Solder, Screw and Wire Lead Terminations Available
 - ▶ Sealing Meets IP67 and IP60 of IEC60529



WT11S



Stock No.	Mfr.'s Type*	Contact Form	Circuit	EACH		
				1-24	25-49	50+
70192266	WT11S	SPST	On-Off	12.05	11.05	10.70
70192271	WT12S	SPDT	On-None-On	12.78	11.71	11.33
70192298	WT13S	SPDT	On-Off-On	13.14	12.05	11.23
70192263	WT21S	DPST	On-Off	17.67	16.21	15.69
70192272	WT22S	DPDT	On-None-On	18.37	16.83	16.28
70192273	WT23S	DPDT	On-Off-On	18.36	16.84	16.30
70192274	WT11T	SPST	On-Off	12.80	11.70	10.83
70192275	WT12T	SPDT	On-None-On	13.55	12.44	11.47
70192276	WT13T	SPDT	On-Off-On	14.15	12.98	11.99
70192270	WT21T	DPST	On-Off	19.28	17.69	16.16
70192277	WT22T	DPDT	On-None-On	19.96	18.28	16.92
70192278	WT23T	DPDT	On-Off-On	21.60	19.79	18.26

*S=Solder Lug; T=Screw Lug; L=8" wire leads.

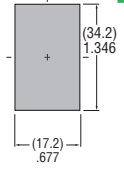
Sealed Rocker Switches — WR Series

Product Description: Solder and screw terminal models meet IP60 behind panel. Wire-lead terminals meet IP67 behind panel. **Electrical Capacity:** 15 A @ 125/250 VAC or 15 A @ 30 VDC. **Dielectric Strength:** 1250 VAC min. between contacts for 1 minute min. **Mechanical Life:** 30,000 Operations min. **Electrical Life:** 15,000 Operations min. **Operating Temperature:** -25°C to +85°C. **Max. Panel Thickness:** 0.157". UL recognized and CSA certified models are available.

- Features**
- ▶ Solder, Screw, Wire Leads and Q.C. Terminations Available
 - ▶ Front Panel Seal Meets IP67 of IEC60529



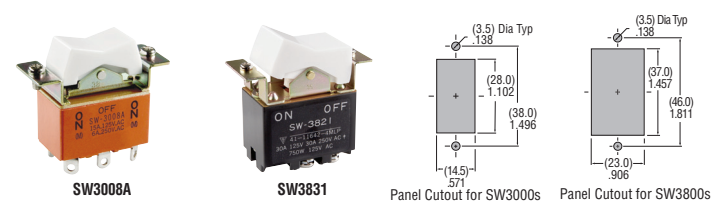
WR13AT



Stock No.	Mfr.'s Type*	Contact Form	Circuit	EACH		
				1-24	25-49	50-99
70192898	WR11AS	SPST	On-None-Off	12.16	11.16	10.80
70192899	WR12AS	SPDT	On-None-On	13.10	12.62	12.15
70192268	WR13AT	SPST	On-Off	14.87	13.64	12.58
70192000	WR13AT	SPDT	On-Off-On	18.27	16.74	15.46
70192338	WR11AF	SPST	On-Off	12.95	12.46	11.99
70192339	WR12AF	SPDT	On-None-On	13.10	12.62	12.15
70192340	WR13AF	SPDT	On-Off-On	13.80	13.28	12.81

*S=Solder Lug; T=Screw Lug; L=8" wire leads; F=0.250" Quick Connect (Q.C.).

Medium and High Capacity Rocker Switches — SW Series



Variations: 1-3 Poles; SW30s rated 15 A @ 125 VAC, SW38s rated 30 A @ 125 VAC; solder lug or screw terminals. UL recognized and CSA certified models are available. Front panel-mount, mounting screws included. White rocker.

- Features**
- ▶ Up to 30 A Rating
 - ▶ 1-3 Poles

Stock No.	Mfr.'s Type	Contact Form	Circuit () = Momentary	Mounting Type	Terminals	EACH		
						1-24	25-49	50-99
70192279	SW3001A	SPST	On-None-Off	Frame	Solder lug	3.50	3.38	3.26
70192280	SW3002A	SPDT	On-None-On	Frame	Solder lug	4.00	3.86	3.73
70192281	SW3003A	SPDT	On-Off-On	Frame	Solder lug	3.73	3.61	3.49
70192269	SW3006A	DPDT	On-None-On	Frame	Solder lug	5.91	5.72	5.54
70192282	SW3007A	DPDT	On-Off-On	Frame	Solder lug	6.31	6.10	5.90
70192265	SW3008A	DPDT	(On)-Off-(On)	Frame	Solder lug	7.61	7.37	7.14
70192259	SW3821	DPST	On-None-Off	Frame	Screw lug	22.57	21.83	21.13
70192261	SW3822	DPDT	On-None-On	Frame	Screw lug	23.44	22.64	21.91
70192260	SW3823	DPST	On-Off-On	Frame	Screw lug	23.92	23.14	22.39
70192283	SW3831	3PDT	On-None-Off	Frame	Screw lug	33.87	32.73	31.67
70192284	SW3832	3PDT	On-None-On	Frame	Screw lug	41.09	39.72	38.45