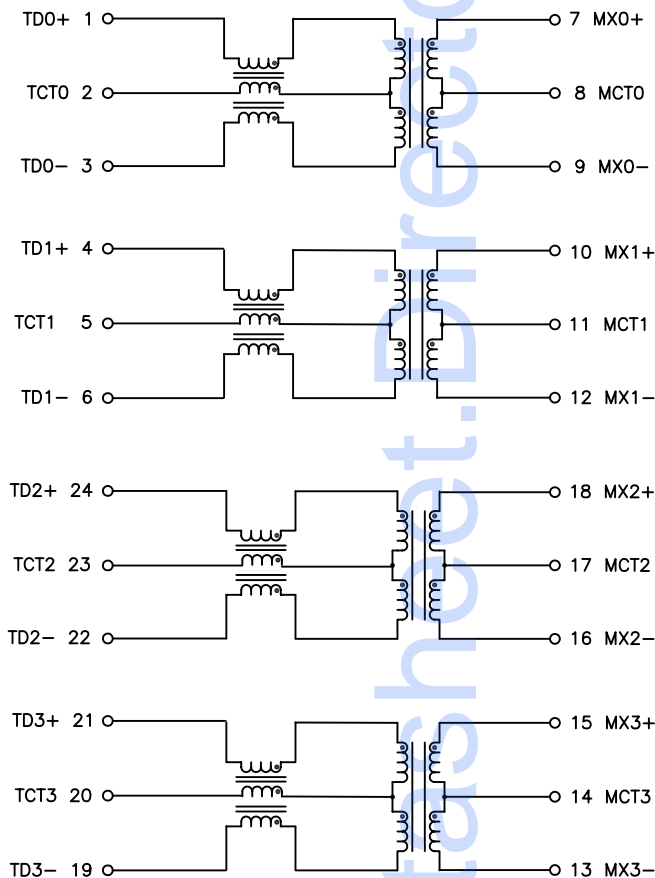


NOTES: UNLESS OTHERWISE SPECIFIED

- NOTICE:

THIS IS A RoHS COMPLIANT COMPONENT/PRODUCT. ALL ENGINEERING CHANGES MUST HAVE PRIOR APPROVAL BY THE DESIGN CENTER.
- HEADER: THERMOSET PLASTIC MATERIAL WITH FLAMMABILITY RATING UL 94V-0 OR BETTER.
- SOLDERABILITY: CONFORMS TO ANSI/J-STD-002, IPC/EIA J-STD-003A.
- OPERATING TEMPERATURE: -40°C TO $+85^{\circ}\text{C}$
- STORAGE TEMPERATURE: -50°C TO $+125^{\circ}\text{C}$
- JEDEC MOISTURE: LEVEL 1.
- DIMENSIONS ARE IN INCHES [MILLIMETERS] WITH THE FOLLOWING TOLERANCES: [MILLIMETERS] ARE FOR REFERENCE ONLY.
.XX = ± 0.01 [0.25]
.XXX = ± 0.005 [0.13]

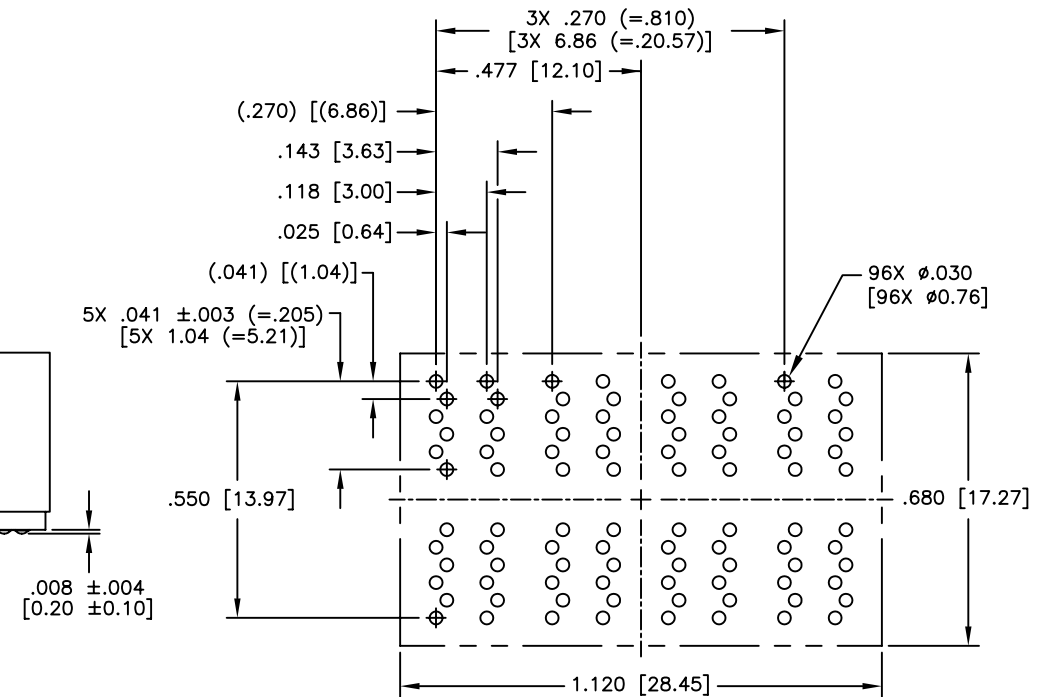
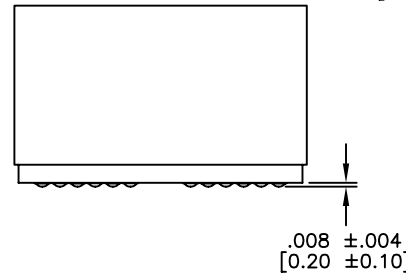


SCHEMATIC

ELECTRICAL CHARACTERISTICS AT $+25^{\circ}\text{C}$ UNLESS OTHERWISE SPECIFIED
(FOR REFERENCE ONLY. USED FOR CUSTOMER INFORMATION.)

PARAMETER	SPECIFICATIONS	
OPERATING TEMP	$-40^{\circ}\text{C} \sim +85^{\circ}\text{C}$	
TURNS RATIO	1 : 1 $\pm 2\%$	
POLARITY	PER SCHEMATIC	
INSERTION LOSS	100 KHz	1-125 MHz
	-1.2 dB MAX	$-0.2 - 0.002 \cdot f^{1.4}$ dB MAXIMUM
RETURN LOSS (Z OUT=100 OHM $\pm 15\%$)	.1-40 MHz	40-100 MHz
	-16 dB MIN	$-10 + 20 \cdot \log_{10}(f/80 \text{ MHz})$ dB MINIMUM
INDUCTANCE (OCL) (MEDIA SIDE, $-40^{\circ}\text{C} \sim +85^{\circ}\text{C}$)	350 μH MIN	(MEASURED AT 100 KHz, 100 mVRMS AND WITH 8 mA DC BIAS)
CROSSTALK, ADJACENT CHANNELS	1 MHz	10-100 MHz
	-50 dB MIN	$-55 + 22 \cdot \log_{10}(f/10)$ dB MINIMUM
COMMON MODE REJECTION RATIO	2 MHz	30-200 MHz
	-50 dB MIN	$-15 + 20 \cdot \log_{10}(f/200)$ dB MINIMUM
DC RESISTANCE, 1/2 WINDING	.65 OHMS MAXIMUM	
DC RESISTANCE IMBALANCE	± 0.65 OHMS MAXIMUM (CENTER TAP SYMMETRY)	
INPUT - OUTPUT ISOLATION	1500 VRMS MINIMUM AT 60 SECONDS	

NOTE: f IS FREQUENCY IN MHz.



© Copyright, 2010. Pulse Electronics Corp. All rights reserved. Drawing specifications subject to change without notice. (12/14/10)

PULSE CONFIDENTIAL & PROPRIETARY	PRODUCT DESCRIPTION	PS DRAWING	SHEET:	DWG. NO./ PART NO.	REV.
	MDL,QUAD,1GD,1:1,SM,TU	PS-2435.001-D	2	HX5400NL	M10

Mouser Electronics

Authorized Distributor

Click to View Pricing, Inventory, Delivery & Lifecycle Information:

Pulse:

[HX5400NL](#)