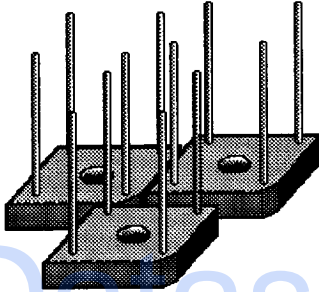


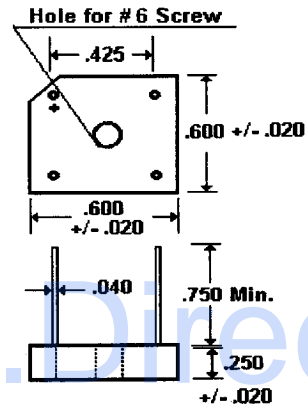
Description

KBPC6 Series



Mechanical Dimensions

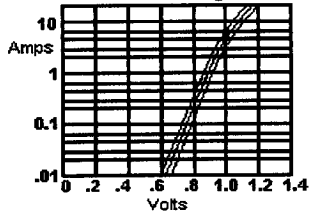
KBPC6 Series



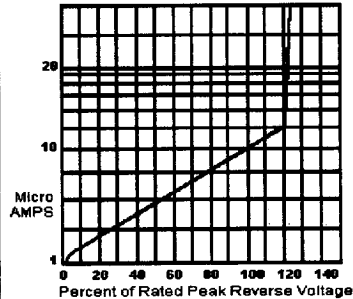
Features

- Small Size
- Low Forward Voltage Drop
- UL Recognition Available
- 150 Amp Surge Overload Rating

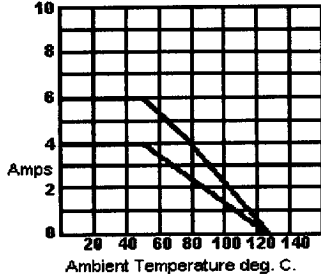
Typical Forward Characteristics
 Instantaneous Current Vs.
 Forward Voltage



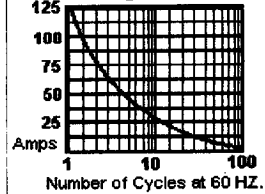
Typical Reverse Characteristics
 Instantaneous Reverse Current
 Vs. Peak Voltage



Forward Current Derating Curve



Non Repetitive
 Surge Current



Maximum Ratings and Electrical Characteristics (@25 Deg. C)

Maximum Recurrent Peak Reverse Voltage.

Maximum RMS Bridge Input Voltage.

Maximum DC Blocking Voltage.

Maximum Average Forward Current

T_c = 100 Deg C.

T_a = 50 Deg C.

Peak Forward Surge Current

8.3 mS single 1/2 sine wave superimposed on rated load

Maximum Forward Voltage Drop

Bridge Element of 3.0 Amp Peak

Maximum Reverse Current, @ Rated DC

Blocking Voltage.

T_J=25 C.

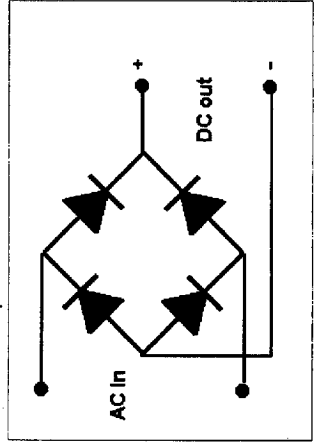
T_J=100 C.

Operating Temperature

Storage Temperature

KBPC6 Series						
KBPC6005	KBPC601	KBPC602	KBPC604	KBPC606	KBPC608	KBPC610
50	100	200	400	600	800	1000
35	70	140	280	420	560	700
50	100	200	400	600	800	1000
				6.0		
				6.0		
				150		
				1.2		
				10		
				1.0		
				-55 to 125 Deg. C.		
				-55 to 150 Deg. C.		

Electrical Description



KBPC6 Series
 6.0 AMP Single Phase Silicon Bridge

Ratings at 25 Deg. C. ambient temperature unless otherwise specified.
 Single Phase Half Wave, 60 HZ Resistive or Inductive Load.
 For Capacitive Load, Derate current by 20%.

This Material Copyrighted By Its Respective Manufacturer