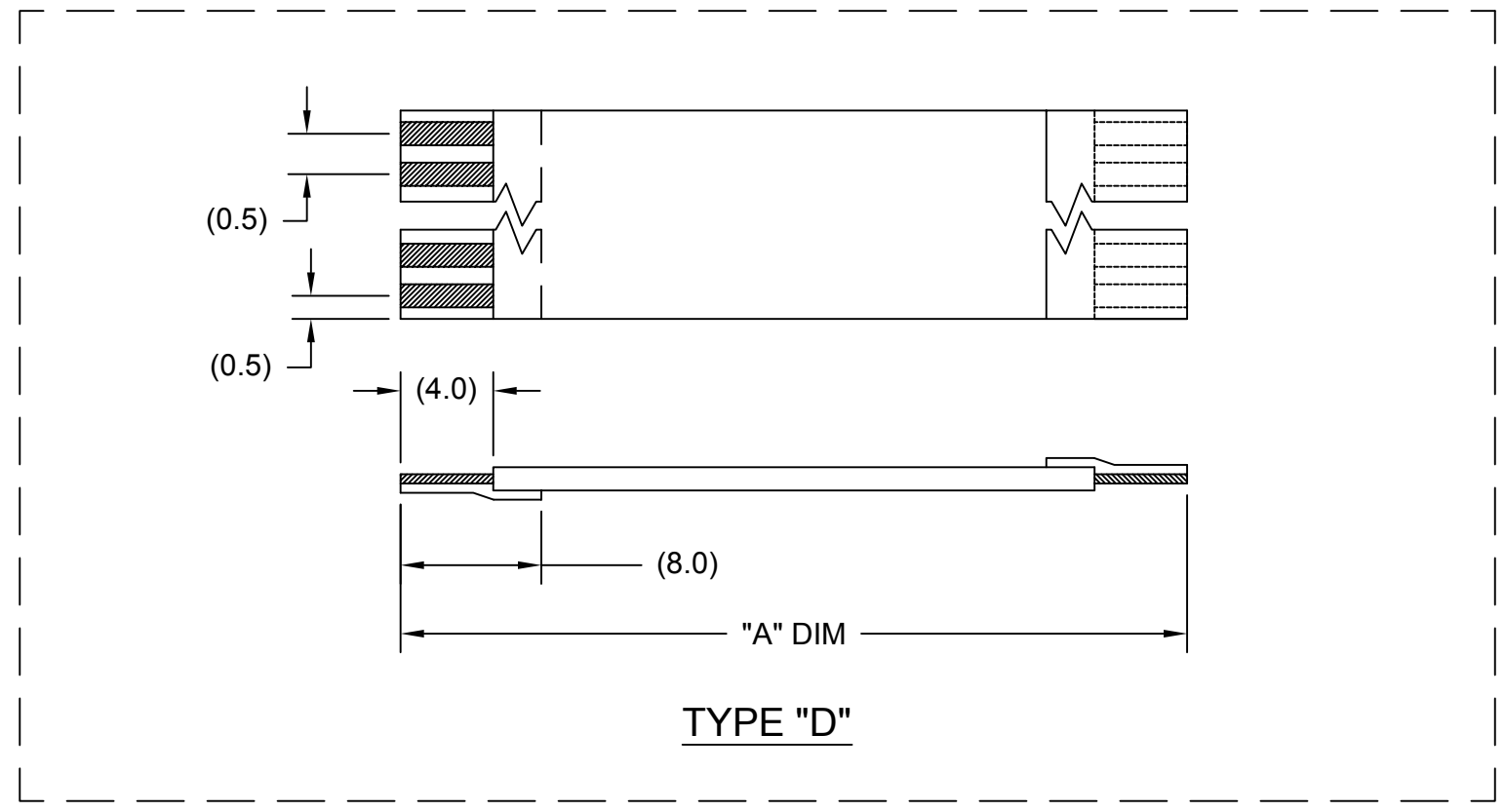
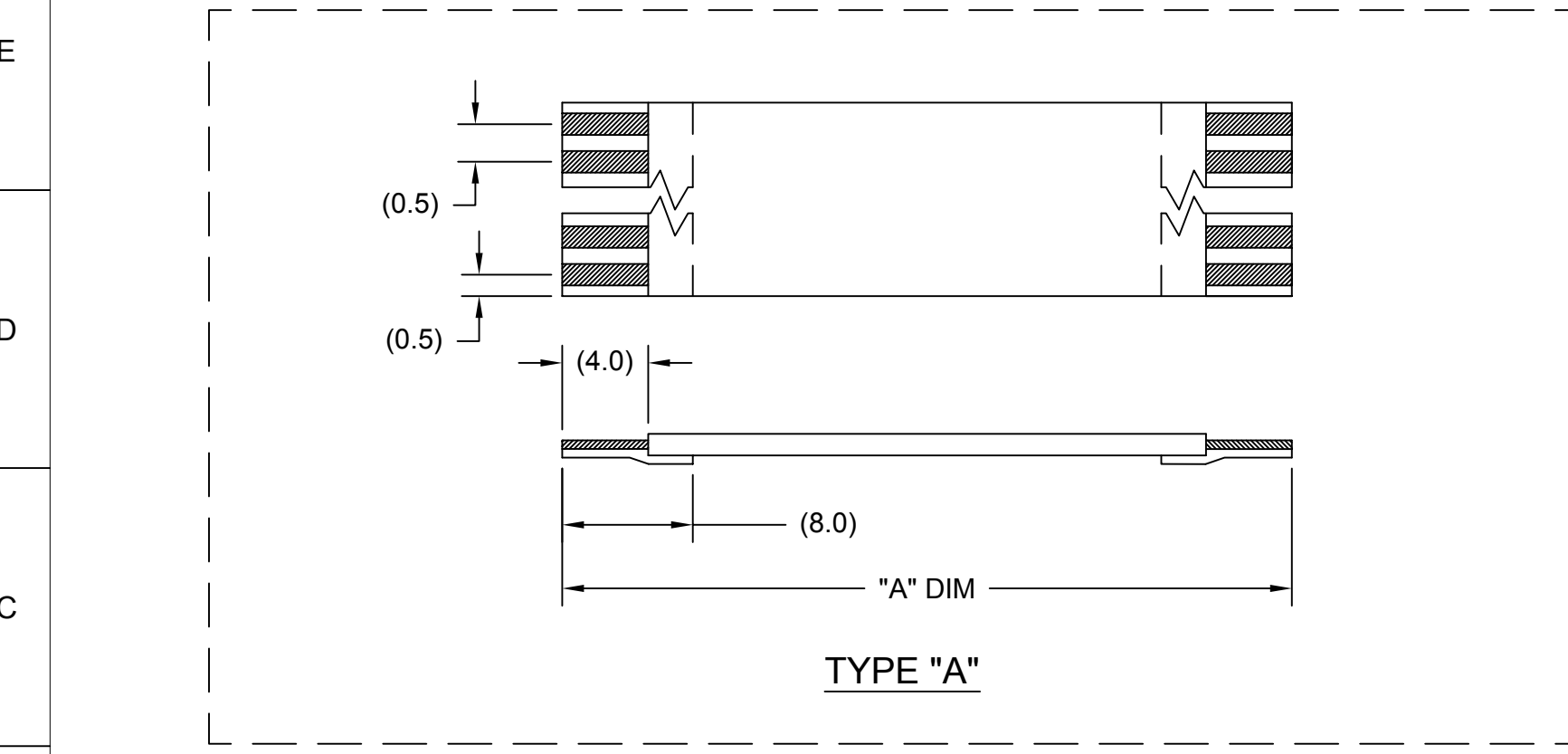


0.50MM CENTER GOLD (Au) FFC JUMPER CABLE CHART

"A" DIM.	1.18 ± .079 INCHES 30 ± 2.00		2 ± .079 INCHES 51 ± 2.00 MM		3 ± .118 INCHES 76 ± 3.00 MM		4 ± .118 INCHES 102 ± 3.00 MM		5 ± .157 INCHES 127 ± 4.00 MM		6 ± .157 INCHES 152 ± 4.00 MM		7 ± .157 INCHES 178 ± 4.00 MM		8 ± .157 INCHES 203 ± 4.00 MM		9 ± .197 INCHES 229 ± 5.00 MM		10 ± .197 INCHES 254 ± 5.00 MM		12 ± .197 INCHES 305 ± 5.00 MM	
STIFFENER	TYPE "A"	TYPE "D"	TYPE "A"	TYPE "D"	TYPE "A"	TYPE "D"	TYPE "A"	TYPE "D"	TYPE "A"	TYPE "D"	TYPE "A"	TYPE "D"	TYPE "A"	TYPE "D"	TYPE "A"	TYPE "D"	TYPE "A"	TYPE "D"	TYPE "A"	TYPE "D"	TYPE "A"	TYPE "D"
CKTS: 6	150200051	150200052	150200053	150200054	150200055	150200056	150200057	150200058	150200059	150200060	150200061	150200062	150200063	150200064	150200065	150200066	150200067	150200068	150200069	150200070	150200071	150200072
CKTS: 8	150200073	150200074	150200075	150200076	150200077	150200078	150200079	150200080	150200081	150200082	150200083	150200084	150200085	150200086	150200087	150200088	150200089	150200090	150200091	150200092	150200093	150200094
CKTS: 10	150200095	150200096	150200097	150200098	150200099	150200100	150200101	150200102	150200103	150200104	150200105	150200106	150200107	150200108	150200109	150200110	150200111	150200112	150200113	150200114	150200115	150200116
CKTS: 12	150200117	150200118	150200119	150200120	150200121	150200122	150200123	150200124	150200125	150200126	150200127	150200128	150200129	150200130	150200131	150200132	150200133	150200134	150200135	150200136	150200137	150200138
CKTS: 14	150200139	150200140	150200141	150200142	150200143	150200144	150200145	150200146	150200147	150200148	150200149	150200150	150200151	150200152	150200153	150200154	150200155	150200156	150200157	150200158	150200159	150200160
CKTS: 16	150200161	150200162	150200163	150200164	150200165	150200166	150200167	150200168	150200169	150200170	150200171	150200172	150200173	150200174	150200175	150200176	150200177	150200178	150200179	150200180	150200181	150200182
CKTS: 18	150200183	150200184	150200185	150200186	150200187	150200188	150200189	150200190	150200191	150200192	150200193	150200194	150200195	150200196	150200197	150200198	150200199	150200200	150200201	150200202	150200203	150200204
CKTS: 20	150200205	150200206	150200207	150200208	150200209	150200210	150200211	150200212	150200213	150200214	150200215	150200216	150200217	150200218	150200219	150200220	150200221	150200222	150200223	150200224	150200225	150200226
CKTS: 22	150200227	150200228	150200229	150200230	150200231	150200232	150200233	150200234	150200235	150200236	150200237	150200238	150200239	150200240	150200241	150200242	150200243	150200244	150200245	150200246	150200247	150200248
CKTS: 24	150200249	150200250	150200251	150200252	150200253	150200254	150200255	150200256	150200257	150200258	150200259	150200260	150200261	150200262	150200263	150200264	150200265	150200266	150200267	150200268	150200269	150200270
CKTS: 26	150200271	150200272	150200273	150200274	150200275	150200276	150200277	150200278	150200279	150200280	150200281	150200282	150200283	150200284	150200285	150200286	150200287	150200288	150200289	150200290	150200291	150200292
CKTS: 28	150200293	150200294	150200295	150200296	150200297	150200298	150200299	150200300	150200301	150200302	150200303	150200304	150200305	150200306	150200307	150200308	150200309	150200310	150200311	150200312	150200313	150200314
CKTS: 30	150200315	150200316	150200317	150200318	150200319	150200320	150200321	150200322	150200323	150200324	150200325	150200326	150200327	150200328	150200329	150200330	150200331	150200332	150200333	150200334	150200335	150200336
CKTS: 32	150200337	150200338	150200339	150200340	150200341	150200342	150200343	150200344	150200345	150200346	150200347	150200348	150200349	150200350	150200351	150200352	150200353	150200354	150200355	150200356	150200357	150200358
CKTS: 34	150200359	150200360	150200361	150200362	150200363	150200364	150200365	150200366	150200367	150200368	150200369	150200370	150200371	150200372	150200373	150200374	150200375	150200376	150200377	150200378	150200379	150200380
CKTS: 36	150200381	150200382	150200383	150200384	150200385	150200386	150200387	150200388	150200389	150200390	150200391	150200392	150200393	150200394	150200395	150200396	150200397	150200398	150200399	150200400	150200401	150200402
CKTS: 38	150200403	150200404	150200405	150200406	150200407	150200408	150200409	150200410	150200411	150200412	150200413	150200414	150200415	150200416	150200417	150200418	150200419	150200420	150200421	150200422	150200423	150200424
CKTS: 40	150200425	150200426	150200427	150200428	150200429	150200430	150200431	150200432	150200433	150200434	150200435	150200436	150200437	150200438	150200439	150200440	150200441	150200442	150200443	150200444	150200445	150200446
CKTS: 42	150200447	150200448	150200449	150200450	150200451	150200452	150200453	150200454	150200455	150200456	150200457	150200458	150200459	150200460	150200461	150200462	150200463	150200464	150200465	150200466	150200467	150200468
CKTS: 44	150200469	150200470	150200471	150200472	150200473	150200474	150200475	150200476	150200477	150200478	150200479	150200480	150200481	150200482	150200483	150200484	150200485	150200486	150200487	150200488	150200489	150200490
CKTS: 46	150200491	150200492	150200493	150200494	150200495	150200496	150200497	150200498	150200499	150200500	150200501	150200502	150200503	150200504	150200505	150200506	150200507	150200508	150200509	150200510	150200511	150200512
CKTS: 48	150200513	150200514	150200515	150200516	150200517	150200518	150200519	150200520	150200521	150200522	150200523	150200524	150200525	150200526	150200527	150200528	150200529	150200530	150200531	150200532	150200533	150200534
CKTS: 50	150200535	150200536	150200537	150200538	150200539	150200540	150200541	150200542	150200543	150200544	150200545	150200546	150200547	150200548	150200549	150200550	150200551	150200552	150200553	150200554	150200555	150200556



NOTES:
 1. NO PRINTING ON JUMPER CABLE UNLESS OTHERWISE SPECIFIED. IF PRINTING IS REQUIRED, THEN IT WOULD BE CONSIDERED A SPECIAL JUMPER CABLE.

RELEASED	EC NO.: USW2010-0097 DRWN: MFI 2010/02/28	DESCRIPTION	QUALITY SYMBOL	GENERAL TOLERANCES (UNLESS SPECIFIED)	DIMENSION STYLE	SCALE	DESIGN UNITS	THIRD ANGLE PROJECTION
			▼=0 ∇=0	mm INCH	MM	---	METRIC	
				4 PLACES ±--- ±--- 3 PLACES ±--- ±--- 2 PLACES ±--- ±--- 1 PLACE ±--- ±---	DRAWN BY DATE CHECKED BY DATE APPROVED BY DATE	TITLE	0.50MM CENTER FFC JUMPER CABLE AU PLATING	
				ANGULAR ±1/2° DRAFT WHERE APPLICABLE MUST REMAIN WITHIN DIMENSIONS	DRASSUSS 2010/11/30 MATERIAL NO. SEE CHART	DOCUMENT NO. SD-15020-001	MOLEX INCORPORATED	
1	REV				SIZE C	THIS DRAWING CONTAINS INFORMATION THAT IS PROPRIETARY TO MOLEX INCORPORATED AND SHOULD NOT BE USED WITHOUT WRITTEN PERMISSION		

13

12

11

10

9

8

7

6

5

4

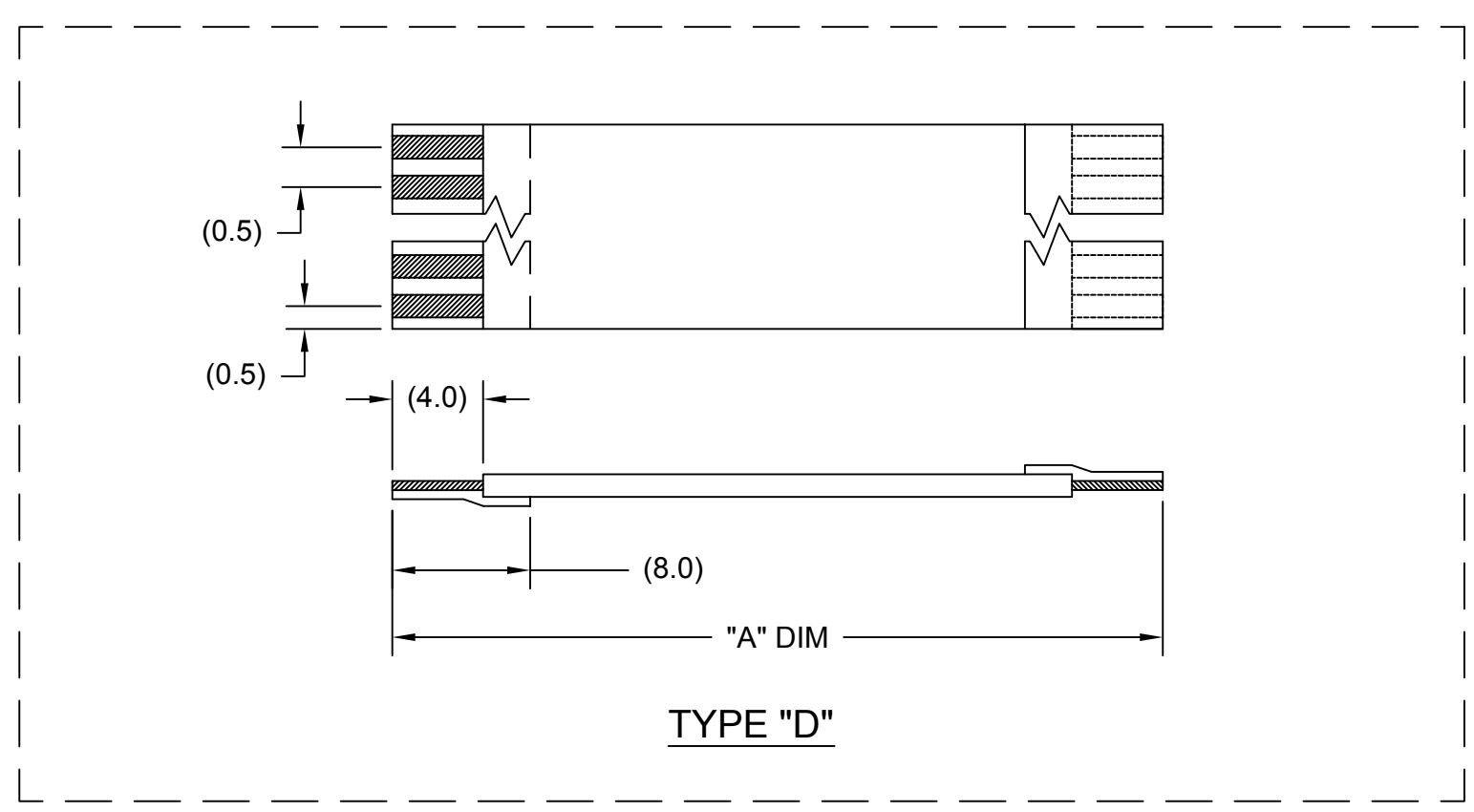
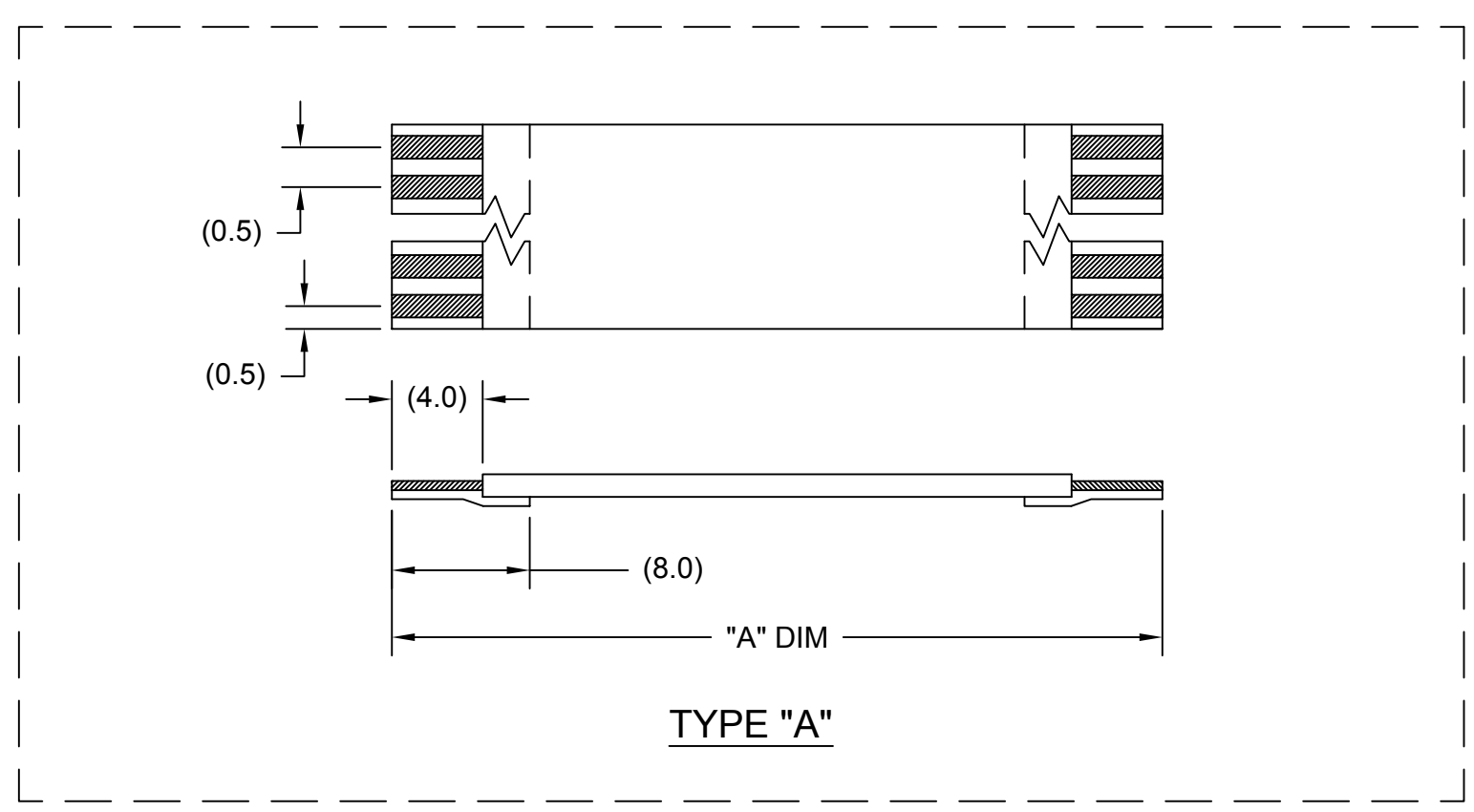
3

2

1

0.50MM CENTER GOLD (Au) FFC JUMPER CABLE CHART

"A" DIM.	1.18 ± .079 INCHES 30 ± 2.00		2 ± .079 INCHES 51 ± 2.00 MM		3 ± .118 INCHES 76 ± 3.00 MM		4 ± .118 INCHES 102 ± 3.00 MM		5 ± .157 INCHES 127 ± 4.00 MM		6 ± .157 INCHES 152 ± 4.00 MM		7 ± .157 INCHES 178 ± 4.00 MM		8 ± .157 INCHES 203 ± 4.00 MM		9 ± .197 INCHES 229 ± 5.00 MM		10 ± .197 INCHES 254 ± 5.00 MM		12 ± .197 INCHES 305 ± 5.00 MM	
STIFFENER	TYPE "D"	TYPE "A"	TYPE "D"	TYPE "A"	TYPE "D"	TYPE "A"	TYPE "D"	TYPE "A"	TYPE "D"	TYPE "A"	TYPE "D"	TYPE "A"	TYPE "D"	TYPE "A"	TYPE "D"	TYPE "A"	TYPE "D"	TYPE "A"	TYPE "D"	TYPE "A"	TYPE "D"	TYPE "A"
CKTS: 7	150200744	150200745	150200746	150200747	150200748	150200749	150200750	150200751	150200752	150200753	150200754	150200755	150200756	150200757	150200758	150200759	150200760	150200761	150200762	150200763	150200764	150200765
CKTS: 9	150200766	150200767	150200768	150200769	150200770	150200771	150200772	150200773	150200774	150200775	150200776	150200777	150200778	150200779	150200780	150200781	150200782	150200783	150200784	150200785	150200786	150200787
CKTS: 11	150200788	150200789	150200790	150200791	150200792	150200793	150200794	150200795	150200796	150200797	150200798	150200799	150200800	150200801	150200802	150200803	150200804	150200805	150200806	150200807	150200808	150200809
CKTS: 13	150200810	150200811	150200812	150200813	150200814	150200815	150200816	150200817	150200818	150200819	150200820	150200821	150200822	150200823	150200824	150200825	150200826	150200827	150200828	150200829	150200830	150200831
CKTS: 15	150200832	150200833	150200834	150200835	150200836	150200837	150200838	150200839	150200840	150200841	150200842	150200843	150200844	150200845	150200846	150200847	150200848	150200849	150200850	150200851	150200852	150200853
CKTS: 17	150200854	150200855	150200856	150200857	150200858	150200859	150200860	150200861	150200862	150200863	150200864	150200865	150200866	150200867	150200868	150200869	150200870	150200871	150200872	150200873	150200874	150200875
CKTS: 19	150200876	150200877	150200878	150200879	150200880	150200881	150200882	150200883	150200884	150200885	150200886	150200887	150200888	150200889	150200890	150200891	150200892	150200893	150200894	150200895	150200896	150200897
CKTS: 21	150200898	150200899	150200900	150200901	150200902	150200903	150200904	150200905	150200906	150200907	150200908	150200909	150200910	150200911	150200912	150200913	150200914	150200915	150200916	150200917	150200918	150200919
CKTS: 23	150200920	150200921	150200922	150200923	150200924	150200925	150200926	150200927	150200928	150200929	150200930	150200931	150200932	150200933	150200934	150200935	150200936	150200937	150200938	150200939	150200940	150200941
CKTS: 25	150200942	150200943	150200944	150200945	150200946	150200947	150200948	150200949	150200950	150200951	150200952	150200953	150200954	150200955	150200956	150200957	150200958	150200959	150200960	150200961	150200962	150200963
CKTS: 27	150200964	150200965	150200966	150200967	150200968	150200969	150200970	150200971	150200972	150200973	150200974	150200975	150200976	150200977	150200978	150200979	150200980	150200981	150200982	150200983	150200984	150200985
CKTS: 29	150200986	150200987	150200988	150200989	150200990	150200991	150200992	150200993	150200994	150200995	150200996	150200997	150200998	150200999	15021000	15021001	15021002	15021003	15021004	15021005	15021006	15021007
CKTS: 31	15021008	15021009	15021010	15021011	15021012	15021013	15021014	15021015	15021016	15021017	15021018	15021019	15021020	15021021	15021022	15021023	15021024	15021025	15021026	15021027	15021028	15021029
CKTS: 33	15021030	15021031	15021032	15021033	15021034	15021035	15021036	15021037	15021038	15021039	15021040	15021041	15021042	15021043	15021044	15021045	15021046	15021047	15021048	15021049	15021050	15021051
CKTS: 35	15021052	15021053	15021054	15021055	15021056	15021057	15021058	15021059	15021060	15021061	15021062	15021063	15021064	15021065	15021066	15021067	15021068	15021069	15021070	15021071	15021072	15021073
CKTS: 37	15021074	15021075	15021076	15021077	15021078	15021079	15021080	15021081	15021082	15021083	15021084	15021085	15021086	15021087	15021088	15021089	15021090	15021091	15021092	15021093	15021094	15021095
CKTS: 39	15021096	15021097	15021098	15021099	15021100	15021101	15021102	15021103	15021104	15021105	15021106	15021107	15021108	15021109	15021110	15021111	15021112	15021113	15021114	15021115	15021116	15021117
CKTS: 41	15021118	15021119	15021120	15021121	15021122	15021123	15021124	15021125	15021126	15021127	15021128	15021129	15021130	15021131	15021132	15021133	15021134	15021135	15021136	15021137	15021138	15021139
CKTS: 43	15021140	15021141	15021142	15021143	15021144	15021145	15021146	15021147	15021148	15021149	15021150	15021151	15021152	15021153	15021154	15021155	15021156	15021157	15021158	15021159	15021160	15021161
CKTS: 45	15021162	15021163	15021164	15021165	15021166	15021167	15021168	15021169	15021170	15021171	15021172	15021173	15021174	15021175	15021176	15021177	15021178	15021179	15021180	15021181	15021182	15021183
CKTS: 47	15021184	15021185	15021186	15021187	15021188	15021189	15021190	15021191	15021192	15021193	15021194	15021195	15021196	15021197	15021198	15021199	15021200	15021201	15021202	15021203	15021204	15021205
CKTS: 49	15021206	15021207	15021208	15021209	15021210	15021211	15021212	15021213	15021214	15021215	15021216	15021217	15021218	15021219	15021220	15021221	15021222	15021223	15021224	15021225	15021226	15021227



NOTES:
 1. NO PRINTING ON JUMPER CABLE UNLESS OTHERWISE SPECIFIED. IF PRINTING IS REQUIRED, THEN IT WOULD BE CONSIDERED A SPECIAL JUMPER CABLE.

SEE SHEET 1	EC NO: DRWN: 1	REV	DESCRIPTION	QUALITY SYMBOL	GENERAL TOLERANCES (UNLESS SPECIFIED)		DIMENSION STYLE		SCALE	DESIGN UNITS	THIRD ANGLE PROJECTION
				▼=0	mm	INCH	MM	---	METRIC		
				∇=0	4 PLACES ±---	±---	DRAWN BY	DATE	TITLE		
					3 PLACES ±---	±---	CHECKED BY	DATE			
					2 PLACES ±---	±---	APPROVED BY	DATE			
	1 PLACE ±---	±---	ANGULAR ±1/2°		DRASMUSS 2010/11/30		molex MOLEX INCORPORATED		SHEET NO. 2 OF 2		
			DRAFT WHERE APPLICABLE MUST REMAIN WITHIN DIMENSIONS		SEE CHART		DOCUMENT NO. SD-15020-001		THIS DRAWING CONTAINS INFORMATION THAT IS PROPRIETARY TO MOLEX INCORPORATED AND SHOULD NOT BE USED WITHOUT WRITTEN PERMISSION		

13

12

11

10

9

8

7

6

5

4

3

2

1