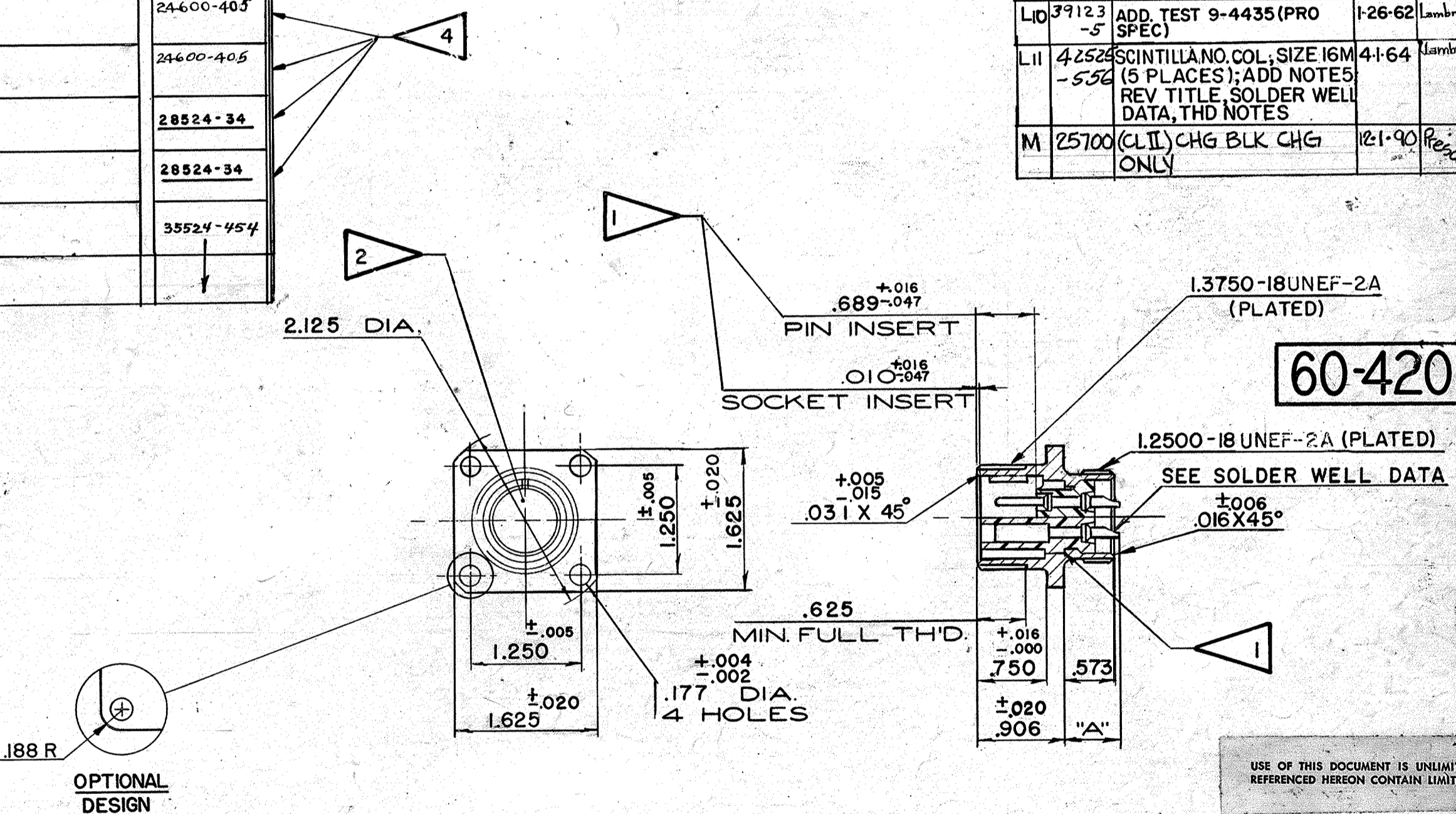


BENDIX NO.	ORDNANCE NO.	SHELL	INSERT	CONTACT			REL WT LB
				QUAN	SIZE	SCINTILLA NO.	
60-42022-2P	7722351	60-36154-22	10-74822-2P	3	8	10-35531	24708-87
60-42022-2S	7722352		10-74822-2S	3	8	10-35532	24708-87
60-42022-7P	7716780		10-74822-7P	1	0	10-35527	24708-87
60-42022-7S	7716781		10-74822-7S	1	0	10-35528	24708-87
60-42022-15P	7716784		10-74822-15P	5	12	10-33646	24708-87
60-42022-15S	7716785		10-74822-15S	5	12	10-33644	24708-87
60-42022-19P	7524942		10-74822-19P	14	16	10-40599	24708-87
60-42022-19S	7524943		10-74822-19S	14	16	10-40598	24708-87
60-42022-23P	7722353		10-74822-23P	8	12	10-33646	24708-87
60-42022-23S	7722354		10-74822-23S	8	12	10-33644	24708-87
60-42022-22P	7524944		10-74822-22P	4	8	10-35531	24708-87
60-42022-22S	7524945		10-74822-22S	4	8	10-35532	24708-87
60-42022-9P	7716782	60-36154-22	10-74822-9P	3	12	10-33646	24600-405
60-42022-9S	7716783		10-74822-9S	3	12	10-33644	24600-405
60-42022-8P	7971512		10-74822-8P	2	12	10-33646	28524-34
60-42022-8S	7971513		10-74822-8S	2	12	10-33644	28524-34
60-42022-4P	7971515	60-36154-22	10-74822-4P	2	8	10-35531 10-33646	35524-454
60-42022-4S	7971514		10-74822-4S	2	8	10-35532 10-33644	

REL	DATE	WAS	DATE	D'MAN	APPD.
H1	24708-87	CHANGES 1 TO H1 NON-EXISTANT; ADD ORD NOS -19P, -19S, -22P, -22S & ORD DWG. SIZE!	10-31-49	B. F.	[Signature]
H2	24975-89	.689±.047, .010±.047, REM'D SCINTILLA, .062, .031.	6-19-50	M.D.	[Signature]
H3	25515-124	CHG. ORD. NO. COL. #, ADDED ORD. NO. COL. TO CONTACT COL., SOLDERLESS CONTACT CHART -9 ARR.	8-30-50	T.W.	[Signature]
H4	26349-5	ADD TO SHELL COLUMN: OR 10-36154-22	4.6.51	LE D.	[Signature]
K1	26774-35	+004 073±.002 (2PL) TYPE R, REM 10-40484-22 SHELL, 1.222±.000 81.097±.000 GAGE DIAS, ENLARGED VIEWS; CHG. PICT; ADDED 016±.006 X 45° WAS. 906	6-16-51	CAG	[Signature]
L1	26297-170	1.625±.010 (2PL.)	7-27-51	T.S.H.	[Signature]
L2	26323-4	ADDED; .031±.015 X 45° SOCKET INSERT FACE ETC. TO NOTE #1	7-27-51	T.S.H.	[Signature]
L3	28677-4	ADD. OPTIONAL DESIGN & .188 R	12-31-52	A.N.	[Signature]
L4	28524-34	ADD & REL - 8P, - 8S	2-5-53	FMG	[Signature]
L5	29070-4	10-40822 SERIES INSERT	6-1-53	J.J.C.	[Signature]
L6	33525-1	ADD. ORD. NO. TO -8P, -8S	10-24-57	E. MICHEL	[Signature]
L7	35524-454	ADD & REL - 4P, - 4S	4-23-59	REYNOLDS	[Signature]
L8	35757-6	10-36154-22 (SHELL); REM NOTE 5, 9-2432 TEST 9-2535 (PRO SPEC); REM CONTACT ORD COL SOLDERLESS CONTACTS FOR FIELD SERVICE BLOCK, ORD BLOCK, NOTE 3, 4, SIZE 16(SOLDERWELL), ADD & REL 22-4P & S, 9-2811 (PRO SPEC); NOTE 5, LOCAL SOLDER NOTE, REV ORD NO. NOTES 2, 3 & 4; RENOMB NOTES; STANDARDIZED.	9-22-59	ZACHARIAS	[Signature]
L9	36525-126	10-36154-22 (SHELL); REM NOTE 5, 9-2811 (PRO SPEC); .062 & .031 (2 PLACES)	12-15-59	[Signature]	[Signature]
L10	39123-5	ADD TEST 9-4435 (PRO SPEC)	1-26-62	Lambrecht	[Signature]
L11	42524-550	SCINTILLA NO. COL.; SIZE 16M (5 PLACES); ADD NOTES; REV TITLE, SOLDER WELL DATA, THD NOTES	4-1-64	Lambrecht	[Signature]
M	25700	(CLII) CHG BLK CHG ONLY	12-1-90	Reschler	[Signature]

Datasheet.Directory



60-42022

USE OF THIS DOCUMENT IS UNLIMITED. DOCUMENTS REFERENCED HEREON CONTAIN LIMITED RIGHTS DATA.

SOLDER WELL DATA					
CONTACT SIZE	0	4	8	12	16
WELL DIA.	.469 <sup>+0.005</sup> / <sub>-.003</sub>	.332 <sup>+0.005</sup> / <sub>-.003</sub>	.209 <sup>+0.004</sup> / <sub>-.002</sub>	.116 <sup>+0.004</sup> / <sub>-.002</sub>	.078 <sup>+0.004</sup> / <sub>-.002</sub>
WELL DEPTH	.625	.625	.500	.375	.250
DIMENSION "A"	.948	.636	.636	.636	.636

- FOR CONTACT ARRANGEMENTS, SEE DRAWING AND 10431.
  - SOCKET INSERT FACE MAY PROJECT FROM SHELL .037 MAX. OR RECEDE IN SHELL .026 MAX. AS DIMENSIONED. DIMENSIONS MUST BE MAINTAINED WHEN INSERTS ARE PRESSED FIRMLY AGAINST INDICATED SHOULDER.
  - FOR MATING PLUG ASSEMBLY, SEE DRAWING 60-42622 OR 60-42722.
  - NOT TO BE USED FOR NEW DESIGN WORK.
  - SEE WORK ORDER FOR PERMISSIBLE ADDITIONAL OR ALTERNATE STAMPING.
- NOTES: REF SYMBOL ◁

MATERIAL SPEC.	PROCESS SPEC. ASS'Y 9-3104-1 TEST 9-4435	<b>SCINTILLA MAGNETO DIVISION</b> BENDIX AVIATION CORPORATION SIDNEY, N. Y., U. S. A.		TOLERANCES UNLESS OTHERWISE SPECIFIED DIMENSIONS IN DECIMALS ±.010 ANGLES ± 2°	
HEAT TREAT. SPEC.	FINISH SPEC.	CONNECTOR, ELECTRICAL RECEPTACLE, TYPE 0 22 FW		ASSEMBLY	WEIGHT-LBS.
TOOL ACC.		COM. REC. 22014		SUPERSEDES AND IS NOT INTERCHANGEABLE	
D'MAN		CHECKER	MAT.	ST'DS	CH. D'MAN
M.D.		[Signature]	[Signature]	[Signature]	[Signature]
8-31-49		10-5-49	10-14-49	10-14-49	10-14-49
SCALE		NONE		SUPERSEDED BY	
REF.		10-42022		60-42022	