

**COLLECTOR CURRENT = 25 AMPS NPN TYPES**

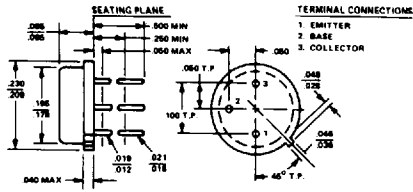
Device No	Case	VCBO Volts	VCEO (sus) Volts	VEBO Volts	hFE		VCE	IC	VCE (sat)	VBE (sat)	@ IC	@ IB	$\theta_{JC}$ °C/W	Ft MHz
					Min	Max								
2N3265	TO-63	150	90	7	20	55	2	15	.75	1.6	15	1.2	1	60
2N3266	TO-63	85	60	7	20	80	3	15	1.2	1.8	15	1.2	1	60
2N6338	TO-3	120	100	6	30	120	2	10	1.8	2.5	25	2.5	.875	30
2N6339	TO-3	140	120	6	30	120	2	10	1.8	2.5	25	2.5	.875	30
2N6340	TO-3	160	140	6	30	120	2	10	1.8	2.5	25	2.5	.875	30
2N6341	TO-3	180	150	6	30	120	2	10	1.8	2.5	25	2.5	.875	30

**COLLECTOR CURRENT = 30 AMPS NPN TYPES**

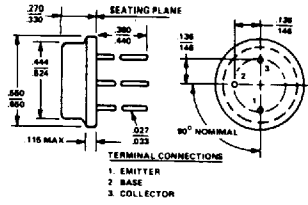
Device No	Case	VCBO Volts	VCEO (sus) Volts	VEBO Volts	hFE		VCE	IC	VCE (sat)	VBE (sat)	@ IC	@ IB	$\theta_{JC}$ °C/W	Ft MHz
					Min	Max								
2N2823	TO-63	80	80	10	10	40	2	20	1.1	2.1	20	3	1	.6
2N2824	TO-63	100	100	10	10	40	2	20	1.1	2.1	20	3	1	.6
2N2825	TO-63	150	150	10	10	40	2	20	1.1	2.1	20	3	1	.6
2N3771	TO-3	50	40	5	15	60	4	15	2	2.7	15	1.5	1.2	.8
JAN 2N3771	TO-3	50	40	5	15	60	4	15	1.5	2.3	15	1.5	1.2	.8
JTX 2N3771	TO-3	50	40	5	15	60	4	15	1.5	2.3	15	1.5	1.2	.8
2N3846	TO-63	300	200	10	10	60	3	10	.75	1.2	10	1.6	.5	10
2N3847	TO-63	400	300	10	10	60	3	10	.75	1.2	10	1.6	.5	10
2N4002	TO-63	100	80	8	20	80	4	15	1.2	1.8	30	4	1	30
2N4003	TO-63	120	100	8	20	80	4	15	1.2	1.8	30	4	1	30
2N5301	TO-3	40	40	5	15	60	2	15	2	1.7	20	2	.875	4
2N5302	TO-3	60	60	5	15	60	2	15	2	1.7	20	2	.875	4
2N5330	TO- 61/I	150	90	8	40	120	2	10	.6	1.3	10	.5	1.25	80
2N5331	TO-63	150	90	8	40	120	2	10	.6	1.3	10	.5	1.25	80
2N5560	TO-63	175	120	8	30	90	2	15	.8	1.3	15	1.5	1.5	40
2N5584	TO-63	225	180	8	40	120	3	10	1.5	1.8	20	2	1	20
2N5671	TO-3	120	90	7	20	100	2	15	.75	1.5	15	1.2	1.25	50
2N5672	TO-3	150	120	7	20	100	2	15	.75	1.5	15	1.2	1.25	50
2N5733	TO-63	100	80	6	30	300	2	10	1.2	1.5	20	2	1	40
2N5734	TO-3	100	80	5	30	300	2	10	1.2	1.5	20	2	1	30
2N6258	TO-3	100	80	7	20	60	2	15	.75	2.5	15	1.5	.7	1
2N6259	TO-3	170	150	7	15	60	2	8	1	2	8	.8	.7	1
2N6270	TO-3	100	80	8	20	100	4	15	1	1.8	15	1.5	.87	75
2N6271	TO-3	120	100	8	20	100	4	15	1	1.8	15	1.5	.87	75
2N6272	TO-63	100	80	8	20	100	4	15	1	1.8	15	1.5	.87	75
2N6273	TO-63	120	100	8	20	100	4	15	1	1.8	15	1.5	.87	75
2N6322	TO-3	300	200	5	40	150	5	5	1.5	2	20	2	.75	30
2N6323	TO-3	400	300	5	30	150	5	5	1.5	2	20	2	.75	30
2N6324	TO-63	300	200	5	40	150	5	5	1.5	2	20	2	.75	30
2N6325	TO-63	400	300	5	30	150	5	5	1.5	2	20	2	.75	30
2N6326	TO-3	60	60	5	6	30	4	30	1.5	1.8	15	1.5	.7	40
2N6327	TO-3	80	80	5	6	30	4	30	1.5	1	15	1.5	.7	4
2N6328	TO-3	100	100	5	6	30	4	30	1.5	1.8	15	1.5	.7	4
2N6359	TO-3	100	80	7	15	60	4	8	1.4	2.2	8	.8	1.2	10
2N6360	TO-3	120	100	7	15	60	4	6	1	2	6	.6	1.2	10

# PHYSICAL DIMENSIONS - PACKAGES

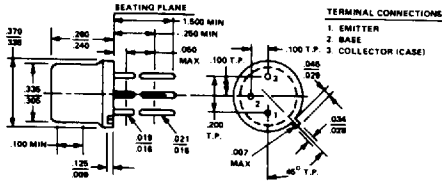
TO-46



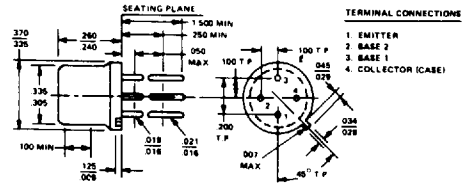
TO-8



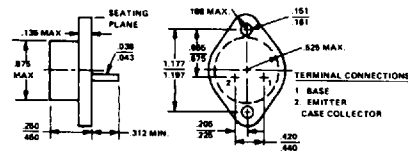
TO-5



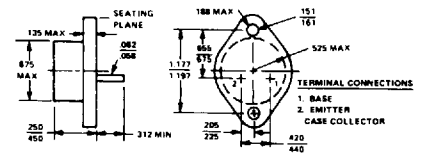
TO-33



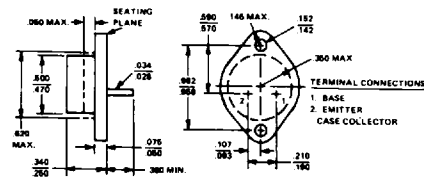
TO-3



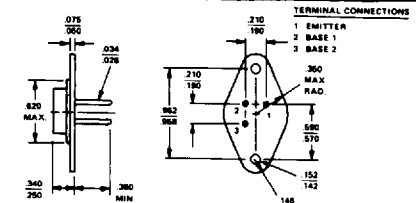
TO-3 (60 mil pins)



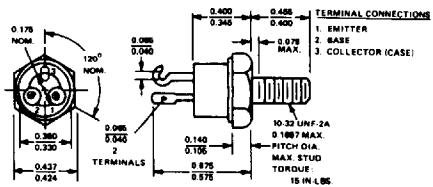
TO-66



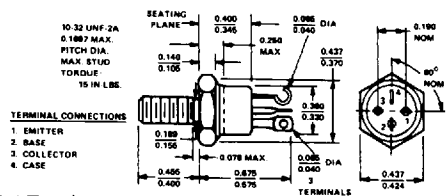
3 PIN TO-66



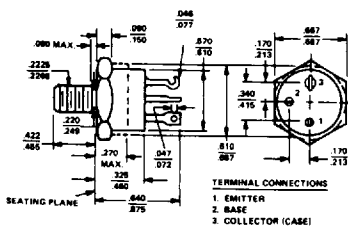
TO-111



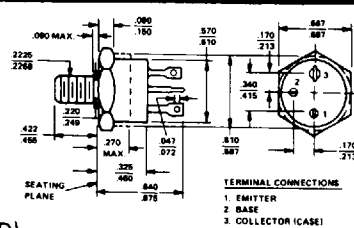
TO-111 (ISOLATED)



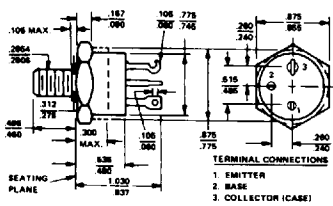
TO-61



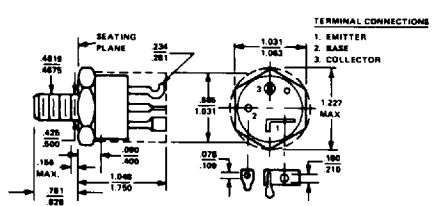
TO-61 (ISOLATED)



TO-63



TO-114



ALL DIMENSIONS IN INCHES