

Switching transistors

(Continued)

Type	Group	Structure	Fig. Nr.	Maximum ratings			Characteristics								
				P_{tot} at $t_{amb} = +45^\circ\text{C}$ W	I_C A	U_{CEO} V	U_{CEsat} at I_C V	h_{FE} at I_C A	I_C and U_{CE} mA	U_{CE} V	t_{on} ns	t_{off} ns	I_C and $I_{B1}; I_{B2}$ mA	$I_{B1}; I_{B2}$ mA	
2 N 708		NPN	9	0.32	0.2	15	≤ 0.4	0.01	30-120	10	1	< 40	< 70	10	3; 1
2 N 2218		NPN	10	0.70	0.8	30	≤ 1.6	0.5	40-120	150	10	25	150	150	15; 15
2 N 2218 A		NPN	10	0.70	0.8	40	≤ 1	0.5	40-120	150	10	25	150	150	15; 15
2 N 2219		NPN	10	0.70	0.8	30	≤ 1.6	0.5	100-300	150	10	25	150	150	15; 15
2 N 2219 A		NPN	10	0.70	0.8	40	≤ 1	0.5	100-300	150	10	25	150	150	15; 15
2 N 2221		NPN	9	0.43	0.8	30	≤ 1.6	0.5	40-120	150	10	25	150	150	15; 15
2 N 2221 A		NPN	9	0.43	0.8	40	≤ 1	0.5	40-120	150	10	25	150	150	15; 15
2 N 2222		NPN	9	0.43	0.8	30	≤ 1.6	0.5	100-300	150	10	25	150	150	15; 15
2 N 2222 A		NPN	9	0.43	0.8	40	≤ 1	0.5	100-300	150	10	25	150	150	15; 15
2 N 2904		PNP	10	0.53	0.6	40	≤ 1.6	0.5	40-120	150	10	< 45	< 100	150	15; 15
2 N 2904 A		PNP	10	0.53	0.6	60	≤ 1.6	0.5	40-120	150	10	< 45	< 100	150	15; 15
2 N 2905		PNP	10	0.53	0.6	40	≤ 1.6	0.5	100-300	150	10	< 45	< 100	150	15; 15
2 N 2905 A		PNP	10	0.53	0.6	60	≤ 1.6	0.5	100-300	150	10	< 45	< 100	150	15; 15
2 N 2906		PNP	9	0.35	0.6	40	≤ 1.6	0.5	40-120	150	10	< 45	< 100	150	15; 15
2 N 2906 A		PNP	9	0.35	0.6	60	≤ 1.6	0.5	40-120	150	10	< 45	< 100	150	15; 15
2 N 2907		PNP	9	0.35	0.6	40	≤ 1.6	0.5	100-300	150	10	< 45	< 100	150	15; 15
2 N 2907 A		PNP	9	0.35	0.6	60	≤ 1.6	0.5	100-300	150	10	< 45	< 100	150	15; 15
2 N 3019		NPN	10	0.71	1	80	≤ 0.5	0.5	100-300	150	10	-	-	-	-
2 N 3053		NPN	10	0.89	1	40	≤ 1.4	0.15	50-250	150	10	-	-	-	-
2 N 3055		NPN	12	115 ^{?)}	15	60	≤ 1.1	4	20-70	4000	4	2800	3300	4000	400; 400
2 N 3700		NPN	9	0.44	1	80	≤ 0.5	0.5	100-300	150	10	-	-	-	-
2 N 4033		PNP	10	0.71	1	80	≤ 0.5	0.5	100-300	100	5	< 100	< 400	500	50; 50
2 N 4036		PNP	10	0.88	1	65	≤ 0.65	0.15	40-140	150	10	< 110	< 700	150	15; 15

Remarks: ^{?)} $t_{case} \leq 25^\circ\text{C}$

Data book reference: B 2 D (2 N 3055 data book B 2 C)

Datasheet.Directory

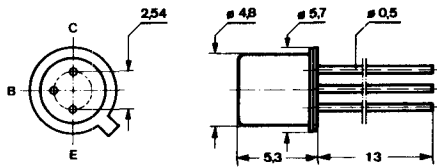


Fig. 9: 18 A 3 DIN 41876
JEDEC TO 18

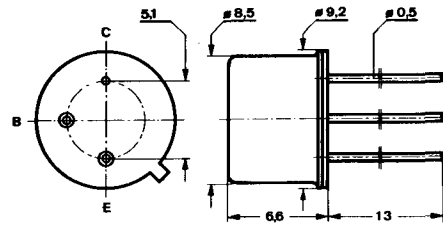


Fig. 10: 5 C 3 DIN 41873
JEDEC TO 39

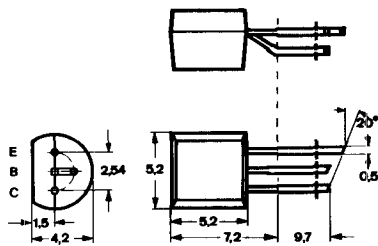


Fig. 11: 10 A 3 DIN 41868
JEDEC TO 92 Z

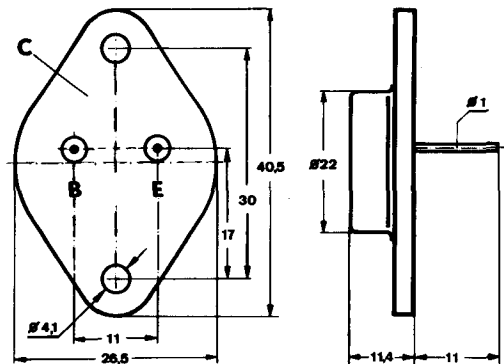


Fig. 12: 3 B 2 DIN 41872
JEDEC TO 3