

# POWER TRANSISTORS



TO-82

TYPE NO.	PT @ 25°C Watts	MAXIMUM RATINGS				h <sub>FE</sub>		Sat V Voltages @				Test Conditions		I <sub>EB0</sub> * ma
		BV <sub>CB0</sub>	BV <sub>CE0</sub>	BV <sub>EB0</sub>	I <sub>c</sub>	MIN	MAX	I <sub>c</sub>	V <sub>CE</sub>	V <sub>CE</sub>	V <sub>BE</sub>	I <sub>c</sub>	I <sub>B</sub>	
		V	V	V	A			A	V	V	V	A	A	
2N1015	150	30	30	25	7.5	10		2	4	1.5	2	2	.3	20
2N1015A	150	60	60	25	7.5	10		2	4	1.5	2	2	.3	20
2N1015B	150	100	100	25	7.5	10		2	4	1.5	2	2	.3	20
2N1015C	150	150	150	25	7.5	10		2	4	1.5	2	2	.3	20
2N1015D	150	200	200	25	7.5	10		2	4	1.5	2	2	.3	20
2N1015E	150	250	250	25	7.5	10		2	4	1.5	2	2	.3	20
2N1015F	150	300	300	25	7.5	10		2	4	1.5	2	2	.3	20
2N1016	150	30	30	25	7.5	10		5	4	2.5	4	5	.750	20
2N1016A	150	60	60	25	7.5	10		5	4	2.5	4	5	.750	20
2N1016B	150	100	100	25	7.5	10		5	4	2.5	4	5	.750	20
JAN2N1016B	150	100	100	25	7.5	10	35	5	4	2.5	4	5	.750	20
2N1016C	150	150	150	25	7.5	10		5	4	2.5	4	5	.750	20
JAN2N1016C	150	150	150	25	7.5	10	35	5	4	2.5	4	5	.750	20
2N1016D	150	200	200	25	7.5	10		5	4	2.5	4	5	.750	20
JAN2N1016D	150	200	200	25	7.5	10	35	5	4	2.5	4	5	.750	20
2N1016E	150	250	250	25	7.5	10		5	4	2.5	4	5	.750	20
2N1016F	150	300	300	25	7.5	10		5	4	2.5	4	5	.750	20

TYPE NO.	PT @ 75°C Watts	MAXIMUM RATINGS				h <sub>FE</sub>		Sat V Voltages @				Test Conditions		I <sub>EB0</sub> ** ma
		BV <sub>CB0</sub>	BV <sub>CE0</sub>	BV <sub>EB0</sub>	I <sub>c</sub>	MIN	MAX	I <sub>c</sub>	V <sub>CE</sub>	V <sub>CE</sub>	V <sub>BE</sub>	I <sub>c</sub>	I <sub>B</sub>	
		V	V	V	A			A	V	V	V	A	A	
2N2739	200*	50	50	15	20	10		10	4	1.5	2.5	10	2	25
2N2740	200*	100	100	15	20	10		10	4	1.5	2.5	10	2	25
2N2741	200*	150	150	15	20	10		10	4	1.5	2.5	10	2	25
2N2742	200*	200	200	15	20	10		10	4	1.5	2.5	10	2	25
2N2745	200*	50	50	15	20	10		15	4	1.5	2.5	15	3	25
2N2746	200*	100	100	15	20	10		15	4	1.5	2.5	15	3	25
2N2747	200*	150	150	15	20	10		15	4	1.5	2.5	15	3	25
2N2748	200*	200	200	15	20	10		15	4	1.5	2.5	15	3	25
2N2751†	200*	50	50	15	20	10		20	4	1.5	2.5	20	4	25
2N2752†	200*	100	100	15	20	10		20	4	1.5	2.5	20	4	25
2N2753†	200*	150	150	15	20	10		20	4	1.5	2.5	20	4	25

\*T<sub>c</sub> = 75°C

\*\*T<sub>A</sub> = 150°C

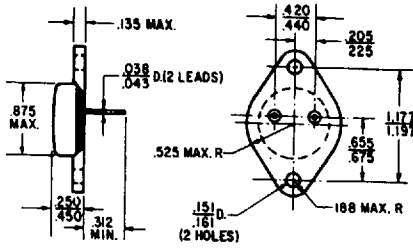
†TO-82 pkg. with 60 MIL DIA. PINS.

# Solid Power Corporation

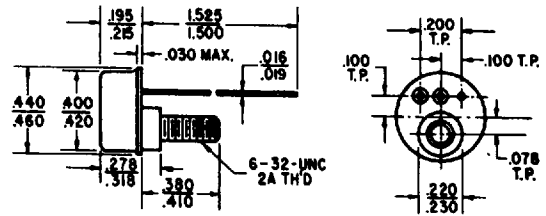
0043592 0000428 770

# CASE OUTLINES

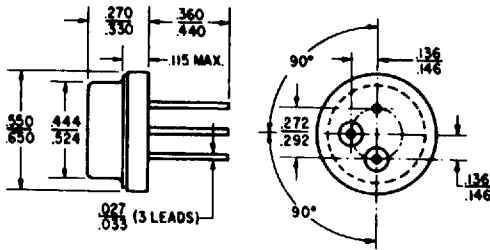
TO-3



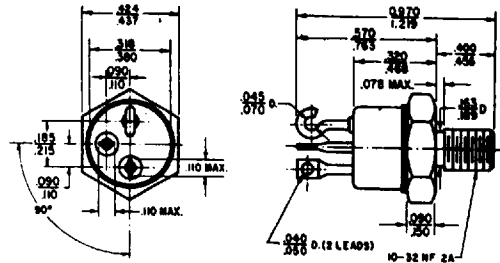
TO-57



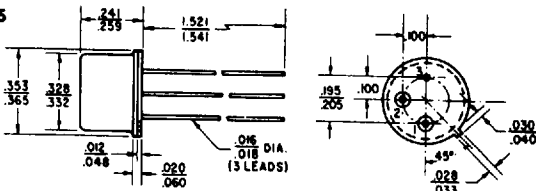
TO-8



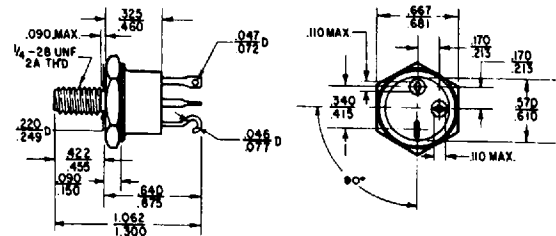
TO-59



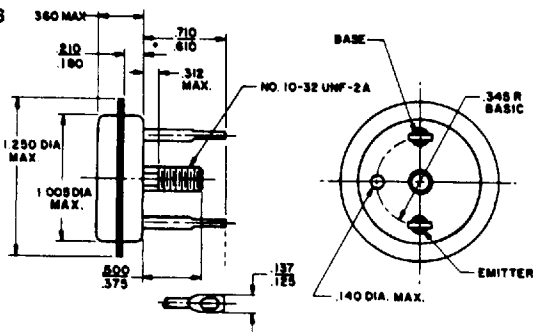
TO-5



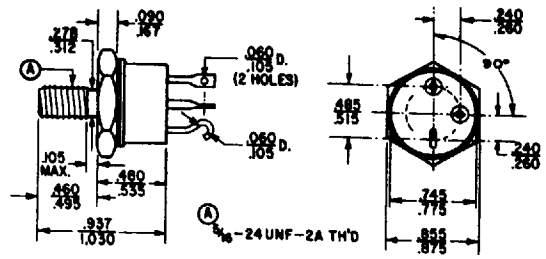
TO-81



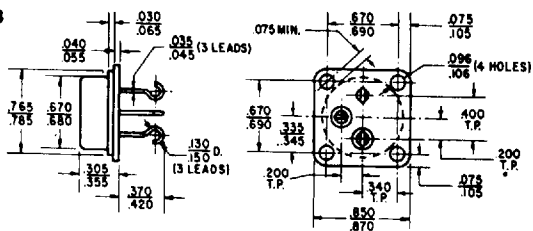
TO-36



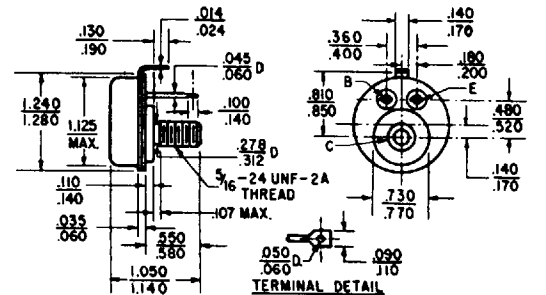
TO-63



TO-53



TO-82



TO-114

