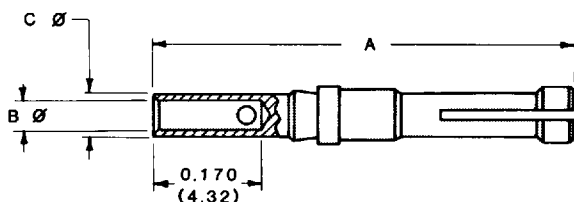


## CRIMP CONTACTS

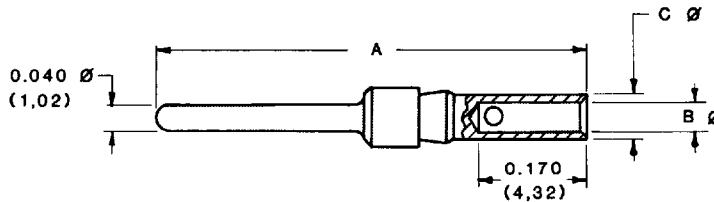
### CLOSED CRIMP BARREL

#### FEMALE CONTACT



PART NO.	WIRE SIZE AWG/(mm <sup>2</sup> )	A	B Ø	C Ø
FC7520D	20/22/24 (0,5/0,3/0,25)	0.612 (15,54)	0.045 (1,14)	0.066 (1,68)
FC7526D	26/28/30 (0,12/0,08/0,05)	0.612 (15,54)	0.026 (0,66)	0.066 (1,68)

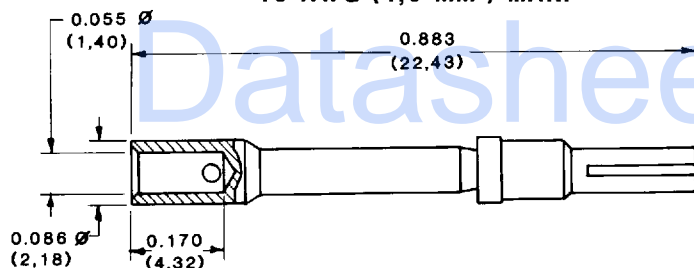
#### MALE CONTACT



PART NO.	WIRE SIZE AWG/(mm <sup>2</sup> )	A	B Ø	C Ø
MC7520D	20/22/24 (0,5/0,3/0,25)	0.618 (15,70)	0.045 (1,14)	0.066 (1,68)
MC7526D	26/28/30 (0,12/0,08/0,05)	0.618 (15,70)	0.026 (0,66)	0.066 (1,68)

#### FEMALE CONTACT

18 AWG (1,0 mm<sup>2</sup>) MAX.

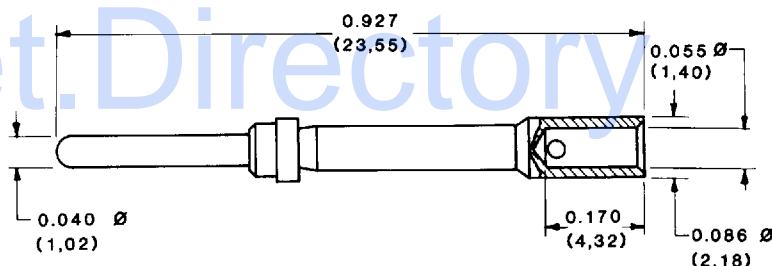


FC7518D

Material - Phosphor bronze.  
Plating - Gold flash over nickel.

#### MALE CONTACT

18 AWG (1,0 mm<sup>2</sup>) MAX.



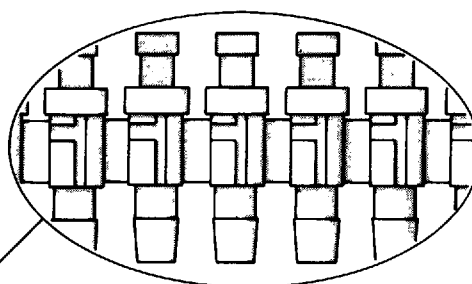
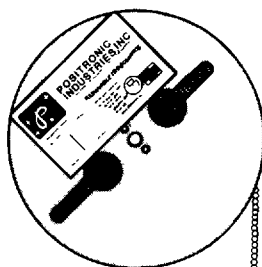
MC7518D

Material - Brass.  
Plating - Gold flash over nickel.

## REELS FOR AUTOMATIC FEED PNEUMATIC CRIMP TOOLS

Contacts may be supplied in plastic carriers, packaged in reels holding 2,000 contacts for use with the automatic feed pneumatic crimp tools, catalog part number 9550-1. The same type carrier is used for both male and female contacts.

All male and female crimp contacts can be ordered in reels by adding letter "R" after the contact part number, such as MC7526DR for a male contact and FC7520DR for a female contact.



DIMENSIONS ARE IN INCHES (MILLIMETERS)  
ALL DIMENSIONS SUBJECT TO CHANGE

Enlarged section of plastic contact carriers

# Soli-D Series

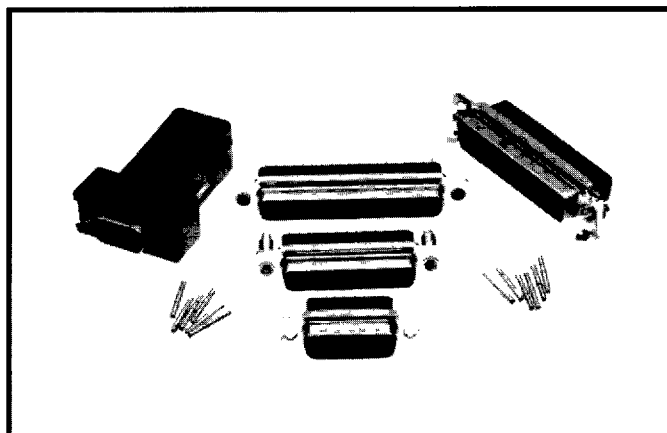
## PROFESSIONAL QUALITY, REMOVABLE CONTACT, SUBMINIATURE-D CONNECTORS FOR SHELTERED INDOOR/OUTDOOR ENVIRONMENTAL APPLICATIONS

**Size 20 Contacts,  
Removable  
Professional Quality  
Connectors**

**IEC Publication 807-3  
Performance Level Two**

**U.L. Recognized File #E49351 CSA Recognized File # LR54219**

**Telecommunication  
U.L. File #14098**



Soli-D Series connectors are professional quality connectors recommended for use in sheltered, non-corrosive indoor or outdoor environments having normal ventilation, but without temperature or humidity controls. This crimp removable contact connector will meet the Performance Level Two requirements of IEC 807-3.

Soli-D Series connectors utilize precision machined contacts with closed barrel, crimp terminations. The female contact features the Robi-Contact open entry design. Other contact terminations such as solder and printed board terminations are

also available. The removable contact feature provides for rapid assembly and permits contact repairs on wiring changes.

Five standard contact variants are offered in arrangements of 9, 15, 25, 37 and 50 contacts. Soli-D Series connectors are mateable and compatible with all D-Subminiature connectors conforming to IEC 807-2, IEC 807-3 and MIL-C-24308.

A wide assortment of cable support hoods and locking systems is available from stock.

Soli-D Series connectors conform to EIA RS 232 and RS 449, and CCITT X.24 interface connection requirements.

### SOLI-D SERIES TECHNICAL CHARACTERISTICS

#### MATERIALS AND FINISHES:

<b>Insulator:</b>	Glass filled nylon resin, UL 94V-0, black color.
<b>Contacts:</b>	Male contacts—precision machined brass alloy. Female contacts—precision machined high tensile phosphor bronze.
<b>Contact Plating:</b>	Professional quality—gold flash over nickel plate. Other finishes available upon request.
<b>Shells:</b>	Steel or brass with tin plate; zinc plate with dichromate seal.
<b>Mounting Spacers:</b>	Nylon plastic, or brass, zinc plate with dichromate seal.
<b>Push-On Fasteners:</b>	Phosphor bronze with tin plate.
<b>Jackscrew Systems:</b>	Steel with zinc plate and dichromate seal, or clear zinc plate.
<b>Vibration Lock Systems:</b>	Slide lock and lock tabs, steel with nickel plate.
<b>Hoods:</b>	Thermoplastic UL 94V-0. Composite, brass or steel with zinc plate and dichromate seal.

#### ELECTRICAL CHARACTERISTICS:

<b>Contact Current Rating:</b>	7.5 amperes nominal.
<b>Initial Contact Resistance:</b>	0.008 ohms maximum.
<b>Proof Voltage:</b>	1000 V r.m.s.
<b>Insulator Resistance:</b>	5 G ohms.
<b>Clearance and Creepage Distance (minimum):</b>	0.039 inch (1.0mm).
<b>Working Voltage:</b>	300 V r.m.s.

#### CLIMATIC CHARACTERISTICS:

<b>Temperature Range:</b>	-55°C to +125°C.
<b>Damp Heat, Steady State:</b>	10 days.

#### MECHANICAL CHARACTERISTICS:

<b>Removable Contacts:</b>	Insert contact to rear face of insulator and release from rear face of insulator. Size 20 contacts, male—0.040 inch (1.02mm) diameter; female—Robi-Contact open entry design. 6 lbs. (27 N).
<b>Contact Retention In Insulator:</b>	
<b>Contact Terminations:</b>	Closed barrel crimp, wire sizes 18 AWG (1.0mm <sup>2</sup> ) through 32 AWG (0.03mm <sup>2</sup> ). Also, solder and straight printed board mount terminations.
<b>Shells:</b>	Male shells may be dimpled for EMI/ESD ground paths.
<b>Polarization:</b>	Trapezoidally shaped shells and polarized jackscrews.
<b>Printed Board Mount:</b>	Rapid installation push-on fasteners.
<b>Locking Systems:</b>	Jackscrews and vibration locking systems.
<b>Mechanical Operations:</b>	500 operations minimum per IEC 512-5.



## ORDERING INFORMATION – CODE NUMBERING SYSTEM

Specify Complete Connector By Following Steps 1 Through 9  
Insert "0" When Step Is Not Used

STEP	1	2	3	4	5	6	7	8	9
	SD	25	F	3	S6	0	T6	X	

### STEP 1 Basic Series

SD Series

### STEP 2

SD Connector Variants

9, 15, 25, 37, 50

### STEP 3 Connector Gender

M – Male  
F – Female

### STEP 4 Type of Contacts

0 – Order Contacts separately  
3 – Solder, Straight Printed Board Mount with  
0.125 (3,18) Tail Length  
32 – Solder, Straight Printed Board Mount with  
0.188 (4,78) Tail Length

### \*STEP 5 Mounting Style

0 – Mounting Hole, 0.120 (3,05) ø  
F – Float Mounts, Universal  
P – Threaded Post, Brass, 0.437 (11,10) Length  
P2 – Threaded Post, Nylon, 0.437 (11,10) Length  
S – Swaged Spacer, 4-40 Threads, 0.437 (11,10)  
Length  
S2 – Swaged Spacer, 4-40 Threads, 0.125 (3,18)  
Length  
S5 – Swaged Locknut, 4-40 Threads  
S6 – Swaged Spacer with Push-on Fastener, 4-40  
Threads, 0.437 (11,10) Length

### STEP 9 Special Options

Consult Sales Department

### STEP 8 Shell Options

0 – Zinc Plated with Dichromate Seal  
X – Tin Plated  
Z – Tin Plated and Dimpled

### \*STEP 7 Locking and Polarizing Systems

0 – None  
V3 – Lock Tab, connector front panel mounted  
V5 – Lock Tab, connector rear panel mounted  
VL – Lock Lever, used with Hoods Only  
T – Fixed Female Jackscrews  
T2 – Fixed Female Jackscrews  
T6 – Fixed Male and Female Polarized  
Jackscrews  
E – Rotating Male Jackscrews  
E2 – Rotating Male Screw Locks  
E6 – Rotating Male and Female Polarized  
Jackscrews

### \*STEP 6 Hoods

0 – None  
J – Hood, Top Opening, Plastic  
L – Hood, Side Opening, Plastic  
\*\*Y6 – Hood, Top Opening, Plastic with Rotating  
Male Jackscrews  
\*\*Y – Hood, Top Opening, Plastic with  
Rotating Male and Female Polarized  
Jackscrews  
Z – Hood, Top or Side Opening, Robust and  
Extended Height, Composite and Plastic  
with Rotating Male Jackscrews  
H – Hood, Top Opening, Metal  
G – Hood, EMI/RFI, Metal  
W – Hood, Top or Side Opening, Plastic

\*For additional information on accessories listed  
in steps 5, 6 and 7, see Accessory Catalog.

\*\*Y and Y6 Options are not available for use with  
9 and 15 contact SD connectors; specify hood  
type Z.

## SD SERIES CRIMP AND SOLDER CONTACT TERMINATIONS

TERMINATION TYPE	CONTACT SIZE	WIRE SIZE AWG/(mm <sup>2</sup> )	FEMALE PART NUMBER	MALE PART NUMBER
CRIMP	20	20/22/24 (0,5/0,3/0,25)	FC7520D	MC7520D
CRIMP	26	26/28/30 (0,12/0,08/0,05)	FC7526D	MC7526D
SOLDER	20	20/22/24 (0,5/0,3/0,25)	FS7520D	MS7520D
SOLDER	26	26/28/30 (0,12/0,08/0,05)	FS7526D	MS7526D

