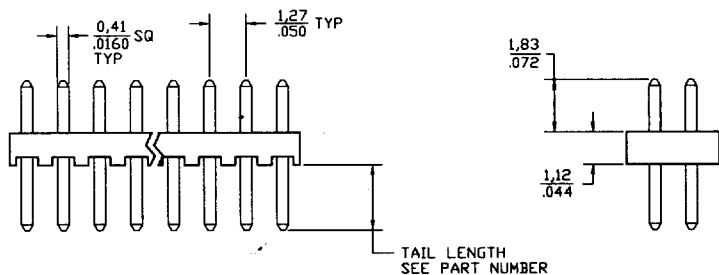
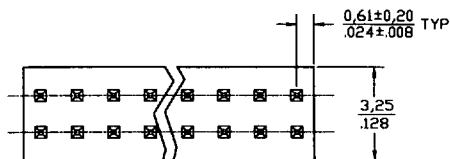
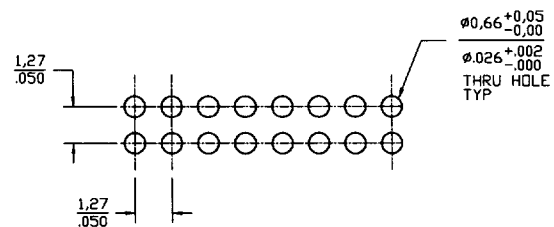


THROUGH HOLE HEADERS

TH50DXXS33-XX X



Packaging: B = Bulk
 T = Tubes
 Tail length: 01=0.060
 02=0.090
 Pins/row (02 through 15)

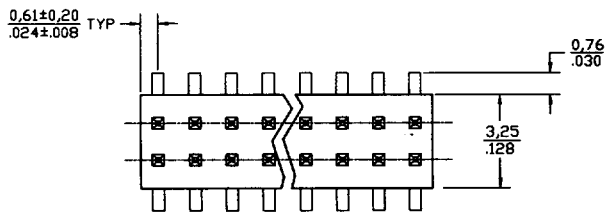


SUGGESTED PCB LAYOUT

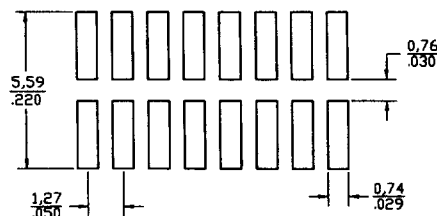
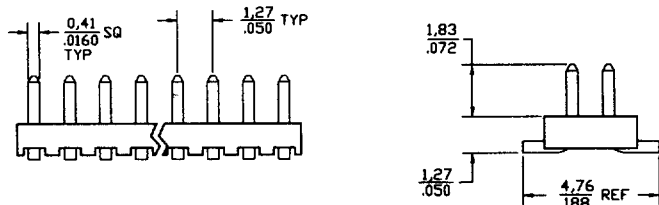
Datasheet.Directory

SMT HEADERS

SMH50DXX33-01X



Packaging: T = Tubes (Standard)
 R = Tape and Reel
 Pins/row (02 through 15)



PCB LAYOUT