

## Universal AC Input

## Radiated and Conducted EMI

## Input Transient Protection

## Power Factor and Harmonic Correction

## Wide Range Output Adjustment

## World wide Safety Agency Approvals

## Optional Din Rail Mounting

## 5 Year Warranty

Lambda's new JWS series meets the demands of today's world wide industrial market with universal input, international agency approvals, and CE Marking. Reducing the risk of system failures the JWS has been engineered to meet input transients and brown-outs in compliance to EN61000-4 (2,-3,-4,-5,-6) as well as meeting EMI Curve B (for both radiated and conducted).

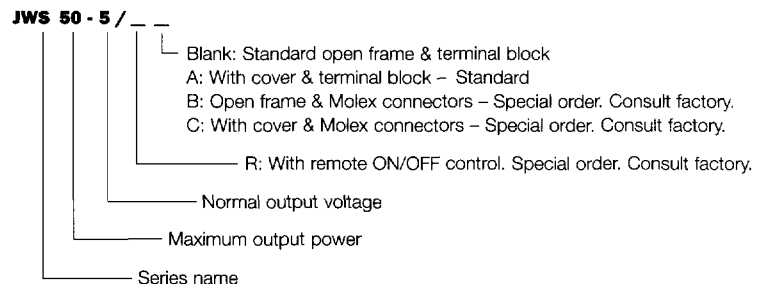
Available in six package sizes from 50-600 watts with output voltages ranging from 2 to 48 volts. Backed by Lambda's five year warranty the JWS series will prove to be the industrial choice for insured reliability and high quality, guaranteeing end-users maximum up-time.

Similar products		Page
<b>ZWS</b>	Low Cost PC Board	14
<b>JFS</b>	High Power Single Output	28
<b>SV</b>	Multiple Output	44
<b>RWS-A</b>	Lower Power	22

<b>AC Input</b> .....	85-265Vac, 47-63Hz.
<b>DC Input</b> .....	120-330VDC.
<b>Efficiency</b> .....	61% on 2V, 65% on 3.3V, 74% on 5.0V, 77% on 12.0 -15.0V, 80% on 24.0 -48.0V
<b>Power Factor Correction</b> ....	0.99 (Typical), EN61000-3-2.
<b>Input Transient Protection</b> ..	EN61000-4 (2,-3,-4,-5,-6). IEC1000-4 (2,-3,-4,-5,-6). IEC801- (2,-3,-4,-5).
<b>EMI</b> .....	Conducted and Radiated per: EN55022-B Curve B & FCC Class B.
<b>Output Voltage Adj Range</b> ..	±10% (+20% ~-10% for 300W/600W).
<b>Line Regulation</b> .....	0.5%.
<b>Load Regulation</b> .....	0.8%.
<b>Output Ripple</b> .....	120 mV p-p for 2, 3.3 & 5 volts. 150 mV p-p for 12, 15 & 24 volts. 200 mV p-p for 48 volts.
<b>Parallel Operation</b> .....	Active current sharing is achieved through a single wire connection. (300W/600W only).
<b>Hold-up Time</b> .....	20ms (typical).
<b>Overcurrent Protection</b> .....	Electronic current limiting circuit limits the output current to 105% of the maximum rated current with automatic recovery.
<b>Overvoltage Protection</b> ....	Non-crowbar, inverter shutdown type OV protection.
<b>Cooling</b> .....	Convection, Internal Fan (300W/600W)
<b>Operating Temperature Range</b>	-10°C to +50°C with derating above +40°C. -10°C to +60°C with derating above +50°C (300W/600W).
<b>Storage Temperature</b> .....	-30°C to +85°C.
<b>Temperature Coefficient</b> ....	Less than 0.02%.
<b>Isolation</b> .....	Input to Output – 3.0kVAC. Input to Chassis (FG) – 2.0kVAC. Output to Chassis (FG) – 500VAC.
<b>Output Status Indicator</b> ....	A green LED when DC output is "ON".
<b>Remote On/Off</b> .....	An open circuit or a voltage of 2 - 5V applied to the terminals will initiate turn-off. Optional for (50-150W).
<b>Remote Sensing</b> .....	(100W-600W).
<b>Input and Output Connections</b>	Barrier strip with clear plastic cover.
<b>DIN Rail Mounting Bracket</b> ..	LDIN50 (JWS50only).
<b>Safety Agency Approval</b> ....	UL1950, CSA950, EN60950, VDE0160, and CE mark (Low voltage Directive).
<b>Warranty</b> .....	5 years.

OUTPUT	POWER (W)	MAX CURRENT AMPS AT			MODEL
		40°	45°	50°	
<b>2V</b> (1.8-2.4)	120.0	60.0	60.0	60.0	<b>JWS300-2</b>
	240.0	120.0	120.0	120.0	<b>JWS600-2</b>
<b>3.3V</b> (2.85-3.63)	33.0	10.0	10.0	8.0	<b>JWS50-3/A</b>
	49.5	15.0	12.0	9.0	<b>JWS75-3/A</b>
	66.0	20.0	16.0	12.0	<b>JWS100-3/A</b>
	99.0	30.0	24.0	18.0	<b>JWS150-3/A</b>
<b>5V</b> (4.50-5.5)	198.0	60.0	60.0	60.0	<b>JWS300-3</b>
	396.0	120.0	120.0	120.0	<b>JWS600-3</b>
	50.0	10.0	10.0	6.0	<b>JWS50-5/A</b>
	75.0	15.0	12.0	9.0	<b>JWS75-5/A</b>
	100.0	20.0	16.0	12.0	<b>JWS100-5/A</b>
<b>12V</b> (10.8-13.2)	150.0	30.0	24.0	18.0	<b>JWS150-5/A</b>
	300.0	60.0	60.0	60.0	<b>JWS300-5</b>
	600.0	120.0	120.0	120.0	<b>JWS600-5</b>
	51.6	4.3	4.3	3.4	<b>JWS50-12/A</b>
	75.6	6.3	5.0	3.8	<b>JWS75-12/A</b>
<b>15V</b> (13.5-16.5)	102.0	8.5	6.8	5.1	<b>JWS100-12/A</b>
	156.0	13.0	10.4	7.8	<b>JWS150-12/A</b>
	324.0	27.0	27.0	27.0	<b>JWS300-12</b>
	645.0	53.0	53.0	53.0	<b>JWS600-12</b>
	52.5	3.5	3.5	2.8	<b>JWS50-15/A</b>
<b>24V</b> (21.6-26.4)	75.0	5.0	4.0	3.0	<b>JWS75-15/A</b>
	105.0	7.0	5.6	4.2	<b>JWS100-15/A</b>
	150.0	10.0	8.0	6.0	<b>JWS150-15/A</b>
	330.0	22.0	22.0	22.0	<b>JWS300-15</b>
	645.0	43.0	43.0	43.0	<b>JWS600-15</b>
<b>48V</b> (43.2-52.8)	52.8	2.2	2.2	1.7	<b>JWS50-24/A</b>
	76.8	3.2	2.5	1.9	<b>JWS75-24/A</b>
	108.0	4.5	3.6	2.7	<b>JWS100-24/A</b>
	156.0	6.5	5.2	3.9	<b>JWS150-24/A</b>
<b>48V</b> (43.2-52.8)	52.8	1.1	1.1	0.88	<b>JWS50-48/A</b>
	76.8	1.6	1.3	0.96	<b>JWS75-48/A</b>
	100.8	2.1	1.7	1.26	<b>JWS100-48/A</b>
	158.4	3.3	2.6	1.98	<b>JWS150-48/A</b>

**Options for JWS50 - JWS150 only.**



\*Connector type is JWS50 & JWS75 only.



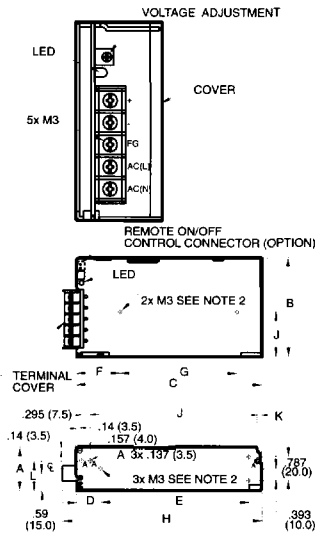
# JWS Series

# High quality industrial power supplies

## JWS50/JWS75

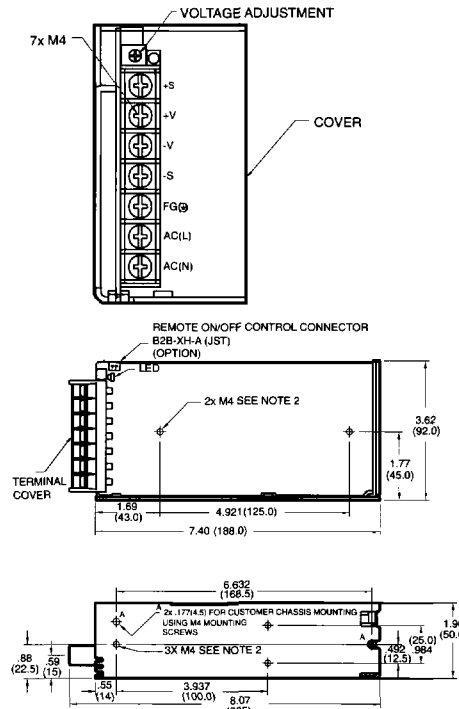
## JWS100

## JWS150

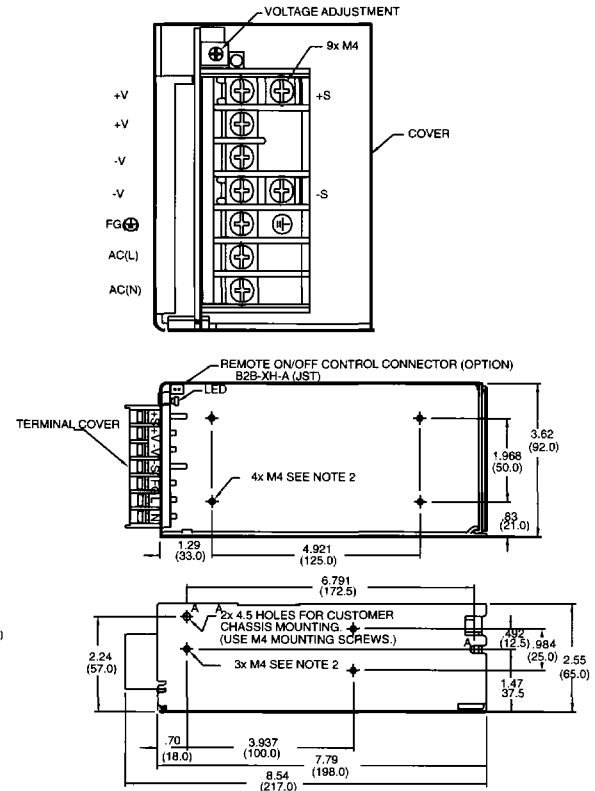


- NOTES:
1. DIMENSIONS ARE IN INCHES EXCEPT DIMENSIONS ( ) ARE IN MM.
  2. 5x M3 EMBOSS, TAPPED AND COUNTERSUNK HOLES FOR CUSTOMER MTG. SCREWS MUST NOT PROTRUDE INTO POWER SUPPLY BY MORE THAN .23(6).
  3. WEIGHT: JWS50-350 GRAMS, JWS75-450 GRAMS.

	MODEL	
	JWS50	JWS75
A	1.45 (37.0)	1.55 (40.0)
B	3.345 (85.0)	3.52 (90.0)
C	5.25 (133.0)	6.88 (175.0)
D	.82 (21.0)	.58 (15.0)
E	5.000 (127.0)	4.921 (125.0)
F	1.47 (37.5)	1.18 (30.0)
G	3.907 (100.0)	4.921 (125.0)
H	6.73 (171.0)	7.35 (187.0)
J	5.630 (143.0)	6.259 (159.0)
K	.18 (4.6)	.18 (4.6)
L	.86 (22.0)	1.18 (30.0)



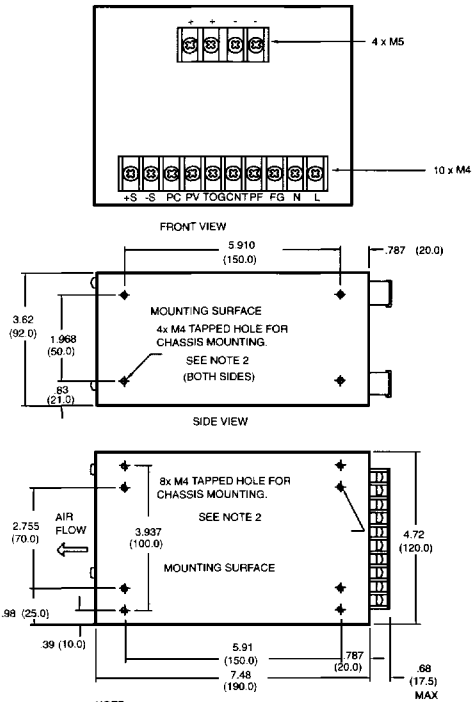
- NOTE:
1. DIMENSIONS ARE IN INCHES EXCEPT DIMENSIONS ( ) ARE IN MM.
  2. 5x M4 EMBOSS, TAPPED AND COUNTERSUNK HOLES FOR CUSTOMER MTG. SCREWS MUST NOT PROTRUDE INTO POWER SUPPLY BY MORE THAN .23 (6).
  3. WEIGHT: 650 GRAMS.



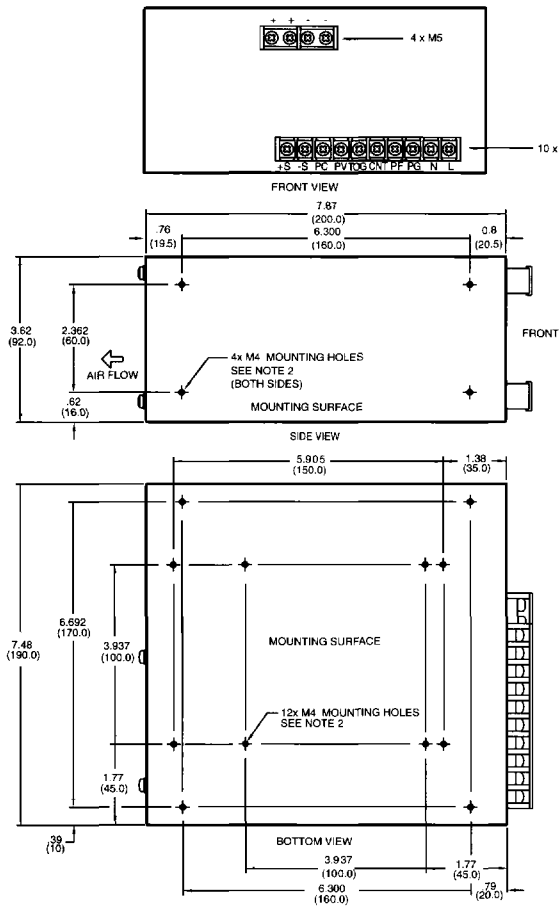
- NOTE:
1. DIMENSIONS ARE IN INCHES EXCEPT DIMENSIONS ( ) ARE IN MM.
  2. 7x EMBOSS, TAPPED AND COUNTERSUNK HOLES FOR CUSTOMER MTG. SCREWS MUST NOT PROTRUDE INTO POWER SUPPLY BY MORE THAN .23 (6.0).
  3. WEIGHT: 850 GRAMS

# JWS300

# JWS600



- NOTE:
1. DIMENSIONS ARE IN INCHES EXCEPT DIMENSIONS ( ) ARE IN MM.
  2. 16x M4 TAPPED HOLES FOR CUSTOMER MOUNTING. SCREWS MUST NOT PROTRUDE INTO P.S. MORE THAN .236 (6MM)
  3. CUSTOMER TO PROVIDE ADEQUATE CLEARANCE NEAR VENT HOLES FOR AIR FLOW.
  4. WEIGHT: NET 5.0 LBS., SHIPPING 6.0 LBS.



- NOTES:
1. DIMENSIONS ARE IN INCHES EXCEPT DIMENSIONS ( ) ARE IN MM.
  2. 12x M4 TAPPED HOLES FOR CUSTOMER MOUNTING. SCREWS MUST NOT PROTRUDE INTO P.S. MORE THAN .236 (6MM)
  3. CUSTOMER TO PROVIDE ADEQUATE CLEARANCE NEAR VENT HOLES FOR AIR FLOW.
  4. WEIGHT: NET 9.0 LBS., SHIPPING 10.0 LBS.