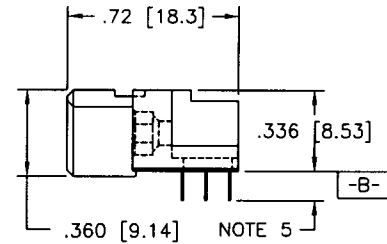
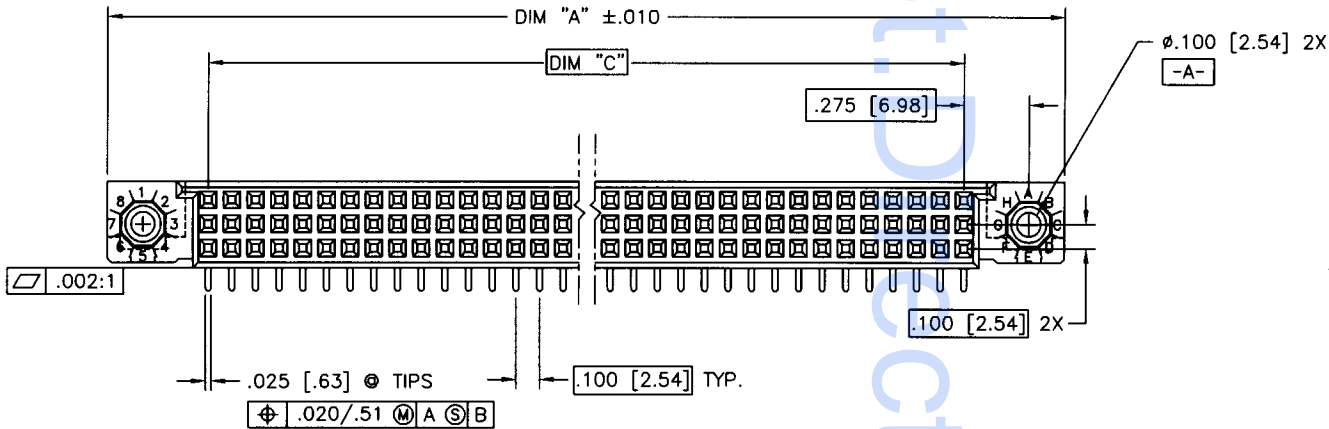
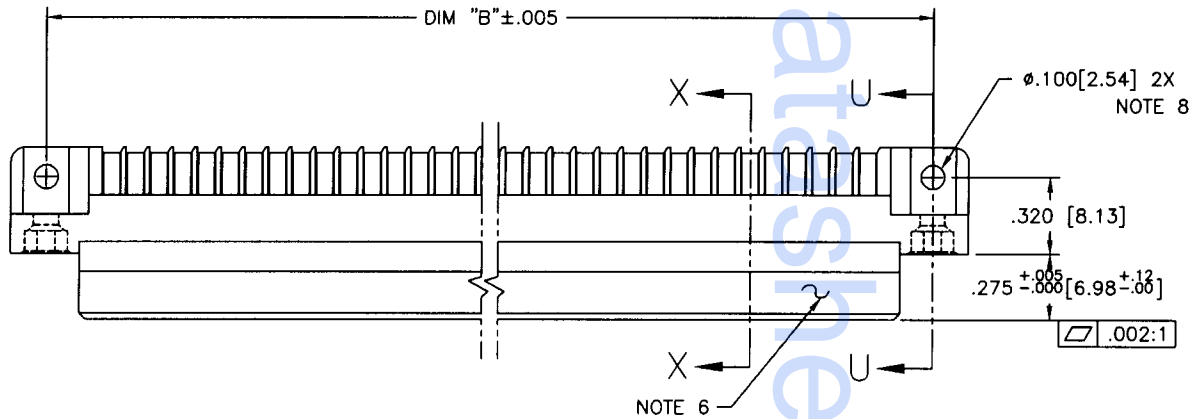


Tous droits strictement réservés. Reproduction ou communication à des tiers interdite sous quelque forme que ce soit sans autorisation écrite du propriétaire. Propriété de c FCI. Droits de reproduction FCI.

All rights strictly reserved. Reproduction or issue to third parties in any form whatever is not permitted without written authority from the proprietor. Property of FCI. Copyright FCI.

PRODUCT NUMBER  
SEE NOTE 1



mat'l. code		NOTE 3		tolerances unless otherwise specified		CUSTOMER COPY	 Electronics FCI <a href="http://www.fciconnect.com">www.fciconnect.com</a>	
ltr	ecn no	dr	date	linear	.XX±.01/.X±.3	 projection INCH/MM scale 1:1	title <b>3 ROW R/A RECEPTACLE          SOLDER TO BOARD, 0 G.P.</b>	
D	V40837	PDP	5/5/94		.XXX±.005/.XX±.13		product family HPC code 213	
E	V41511	GAH	10/13/94		.XXXX±.0020/.XXX±.051		size dwg no 50294 sheet 1 of 3	
F	V60864	GIP	6/5/96	angles	0' ±2'	cage code 22526		
G	V61173	MSC	9/4/96	dr	G. PETERS 6/5/96			
H	V90624	HTB	3/8/99	engr	S. CLARK 6/3/96			
J	V00254	JWS	1/13/00	chr	S. CLARK 6/5/96			
K	V01300	HTB	4/13/00	appd	S. CLARK 6/5/96			
sheet index	revision sheet	K	K	K				
		1	2	3				

ACAD

PDM: Rev:K

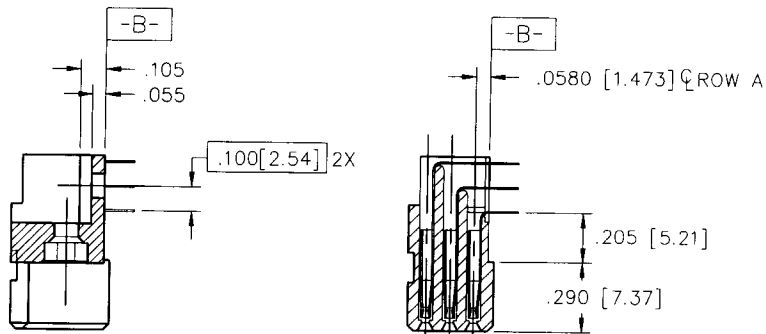
STATUS: Released

Printed: Mar 04, 2005

Tous droits strictement réservés. Reproduction ou communication à des tiers interdite, sous quelque forme que ce soit sans autorisation écrite du propriétaire. Property of FCI. Droits de reproduction FCI.

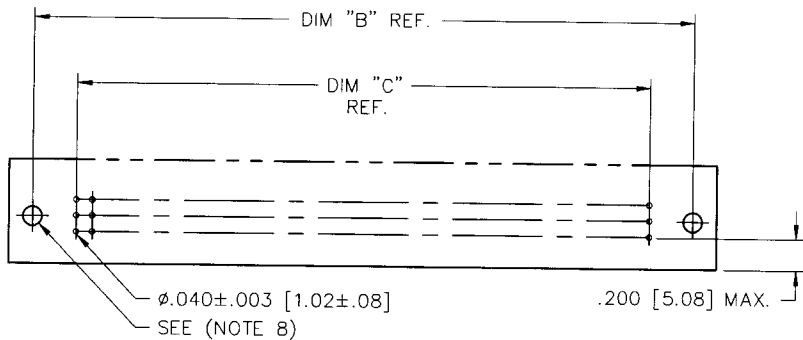
All rights strictly reserved. Reproduction or issue to third parties in any form whatever is not permitted without written authority from the proprietor. Property of FCI. Copyright FCI.

PRODUCT NUMBER	DIM.	LENGTH FORMULAS
SEE NOTE 1	DIM A	.100/2.54 X NO. OF COLUMNS + .75/19.1
	DIM B	.100/2.54 X NO. OF COLUMNS + .450/11.43
	DIM C	.100/2.54 X NO. OF COLUMNS - .100/2.54



SECTION U-U  
NO SPECIAL FEATURE

SECTION X-X



RECOMMENDED PCB LAYOUT  
(ALL HOLES LOCATED ON .100 [2.54] GRID UNLESS OTHERWISE SPECIFIED)

NOTES:

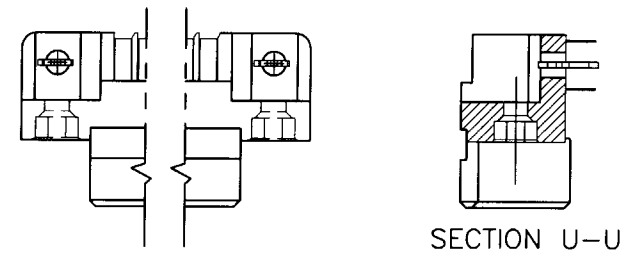
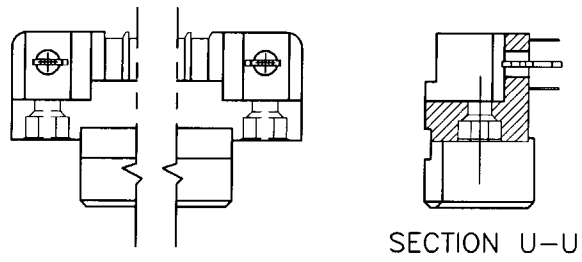
- PRODUCT NUMBERING CODE:  
50294 - X YYY Z S  
SPECIAL FEATURES (NOTE 8)  
TAIL LENGTH (NOTE 5)  
NO. OF POSITIONS (NOTE 2)  
PLATING (NOTE 4)  
BASE NUMBER  
PRODUCT NUMBERING CODE FOR SELECT LOAD PART NUMBERS:  
50294 - XXYY  
SEQUENCE NUMBER ALWAYS 'XX'  
BASE NUMBER
- THIS PRODUCT IS CONFIGURED IN SIZES OF 6 thru 80 COLUMNS IN INCREMENTS OF ONE.  
i.e.: 6,7,8,9.....79,80.
- HOUSING MATERIAL: GLASS & MINERAL FILLED HIGH-TEMP THERMOPLASTIC, FLAME RETARDANT PER UL94 V-0.  
CONTACT MATERIAL: BeCu
- PLATING CONTACT AREA OPTIONS:  
1 = 30u"/.76u GOLD  
3 = 50u"/1.27u GOLD  
5 = 30u"/.76u GXT  
ALL SOLDER TAILS TIN/LEAD
- TAIL LENGTH OPTIONS:  
E = .125±.010 / 3.18±.25  
F = .145±.010 / 3.68±.25  
H = .180±.010 / 4.57±.25
- MANUFACTURE'S NAME, PART NUMBER AND LOT CODE TO APPEAR ON THIS SURFACE PER BUS-12-108.
- FOR DOCUMENTATION MENU, SEE SPEC. BUS-01-057.
- SPECIAL FEATURES (SEE SHEET 3):  
\_ = IF CODE IS OMITTED FROM PRODUCT NO.; CONNECTOR IS PROVIDED AS SHOWN, NO SPECIAL FEATURES ARE SELECTED. FOR P.C.B. ATTACHMENT IN A Ø.120 [3.05] MOUNTING HOLE.  
"A" = IF SPECIFIED, PRE-INSTALLED CLAW FOR P.C.B. ATTACHMENT IN A Ø.100 [2.54] MOUNTING HOLE. (AVAILABLE IN "E" TAIL LENGTH ONLY).  
"B" = IF SPECIFIED, PRE-INSTALLED CLAW FOR P.C.B. ATTACHMENT IN A Ø.120 [3.05] MOUNTING HOLE.  
"C" = IF SPECIFIED, MOLDED GUIDE PINS WITH PRE-INSTALLED CLAW FOR P.C.B. ATTACHMENT IN A Ø.120 [3.05] MOUNTING HOLE.  
"D" = IF SPECIFIED, MOLDED GUIDE PINS w/Ø.120 [3.05] MOUNTING HOLE (NO CLAW).
- CLAW DIMENSION DETERMINED BY P.C.B. HOLE DIAMETER.

mat'l. code				tolerances unless otherwise specified		CUSTOMER COPY		 www.fciconnect.com		
ltr	ecn no	dr	date	linear	.XX±.01/.X±.3	projection		title		
K					.XXX±.005/.XX±.13			3 ROW R/A RECEPTACLE		
				angles	.XXX±.0020/.XXX±.051		INCH/MM	SOLDER TO BOARD, 0 G.P.		
				dr	0° ±2'			product family HPC		code
				enrg	G. PETERS 6/5/96	scale	1:1	size dwg no		
				chr	S. CLARK 6/3/96			A 50294		213
				appd	S. CLARK 6/5/96					sheet 2 of
sheet index	revision sheet							cage code 22526		

PRODUCT NUMBER  
SEE NOTE 1

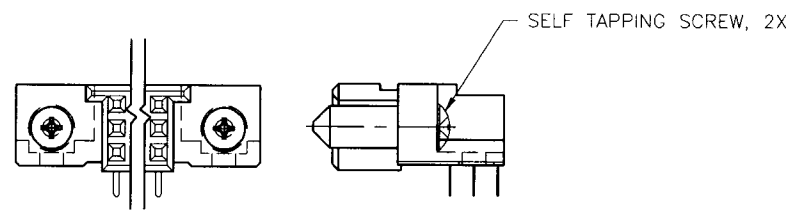
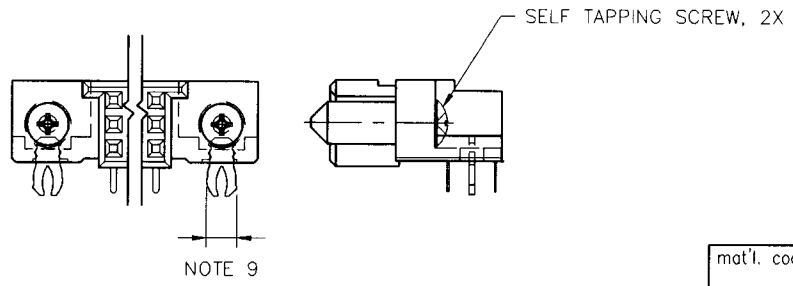
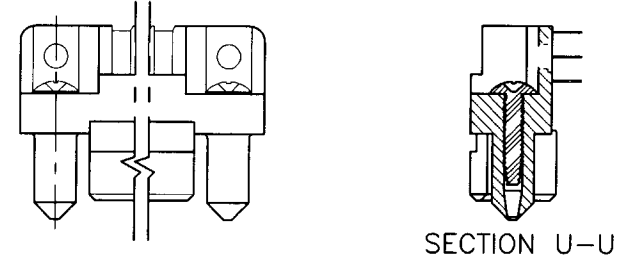
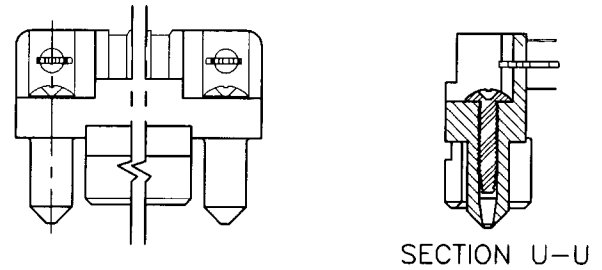
SPECIAL FEATURE OPTION A

SPECIAL FEATURE OPTION B



SPECIAL FEATURE OPTION C

SPECIAL FEATURE OPTION D



Tous droits strictement reserves. Reproduction ou communication a des tiers interdite sous quelque forme que ce soit sans autorisation ecrite du proprietaire. Propriete de c FCI. Droits de reproduction FCI.

All rights strictly reserved. Reproduction or issue to third parties in any form whatever is not permitted without written authority from the proprietor. Property of FCI. Copyright FCI.



mat'l. code				tolerances unless otherwise specified		CUSTOMER COPY	<b>Electronics</b> FCI <a href="http://www.fciconnect.com">www.fciconnect.com</a>	
ltr	ecn no	dr	date	linear	.XX±.01/.X±.3			projection
K					.XXX±.005/.XX±.13		<b>3 ROW R/A RECEPTACLE          SOLDER TO BOARD, 0 G.P.</b>	
				angles	.XXXX±.0020/.XXX±.051			INCH/MM
				dr	0° ±2'	scale N.T.S.	code	
				enr	T. BREWBAKER 4/13/00		size	213
				chr	M. GRAY 4/13/00		dwg no	3 of
				appd	M. GRAY 4/13/00		A	50294
sheet index	revision sheet							