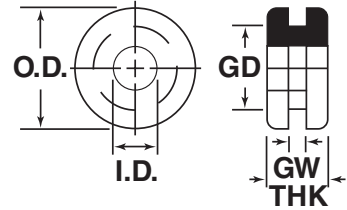
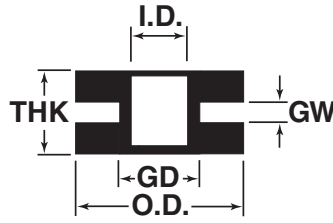


GR
Rubber Hole Grommet

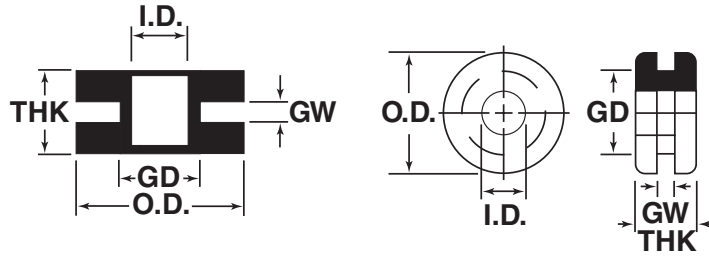
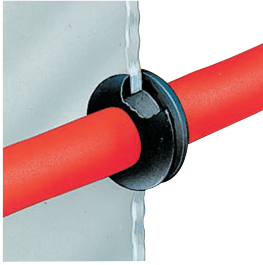


- Temperature Range: 225°F to -50°F (107°C to 46°C)
- Installs instantly by simply snapping into hole
- Excellent adhesion
- Designed to fit standard sheet metal holes

Material: SBR, 60 Durometer Color: Black						
Part No.	"GD" Panel Hole Ø	"GW" Panel Thickness	I.D.	O.D.	"THK" Overall Thickness	Standard Pack
GR3001A	.250 (6.4)	.063 (1.6)	.125 (3.2)	.344 (8.7)	.188 (4.8)	15,000
GR3041A		.063 (1.6)	.156 (4.0)	.375 (9.5)	.188 (4.8)	23,000
GR3053A	.281 (7.2)	.094 (2.4)	.188 (4.8)	.438 (11.1)	.219 (5.6)	8,000
GR3081A	.313 (7.9)	.063 (1.6)	.188 (4.8)	.438 (11.1)	.188 (4.8)	10,000
GR3047A		.063 (1.6)	.219 (5.6)	.438 (11.1)	.188 (4.8)	15,000
GR3401A		.094 (2.4)	.109 (2.8)	.500 (12.7)	.219 (5.6)	5,000
GR3146A		.125 (3.2)	.188 (4.8)	.438 (11.1)	.250 (6.4)	10,000
GR3105A	.375 (9.5)	.250 (6.4)	.188 (4.8)	.438 (11.1)	.375 (9.5)	5,000
GR3165A		.063 (1.6)	.250 (6.4)	.563 (14.3)	.250 (6.4)	6,000
GR3164A		.094 (2.4)	.250 (6.4)	.500 (12.7)	.250 (6.4)	5,000
GR3186A		.125 (3.2)	.250 (6.4)	.500 (12.7)	.281 (7.2)	5,000
GR3028A	.406 (10.3)	.188 (4.8)	.188 (4.8)	.625 (15.9)	.375 (9.5)	3,300
GR3009A		.375 (9.5)	.313 (7.9)	.563 (14.3)	.500 (12.7)	3,000
GR3400A		.125 (3.2)	.266 (6.8)	.625 (15.9)	.375 (9.5)	6,000
GR3002A	.438 (11.1)	.063 (1.6)	.250 (6.4)	.625 (15.9)	.188 (4.8)	5,000
GR3104A		.094 (2.4)	.313 (7.9)	.625 (15.9)	.313 (7.9)	4,000
GR3127A		.188 (4.8)	.250 (6.4)	.625 (15.9)	.313 (7.9)	2,500
GR3384A	.465 (11.8)	.095 (2.4)	.250 (6.4)	.765 (19.4)	.294 (7.5)	5,000
GR3027A	.469 (11.9)	.250 (6.4)	.250 (6.4)	.625 (15.9)	.500 (12.7)	5,000
GR3016A	.500 (12.7)	.125 (3.2)	.375 (9.5)	.625 (15.9)	.406 (10.3)	7,000
GR3250A		.125 (3.2)	.375 (9.5)	.625 (15.9)	.313 (7.9)	7,000
GR3091A		.188 (4.8)	.250 (6.4)	.625 (15.9)	.438 (11.1)	3,500
GR3033A		.250 (6.4)	.375 (9.5)	.750 (19.1)	.500 (12.7)	4,800
GR3209A		.375 (9.5)	.375 (9.5)	.625 (15.9)	.625 (15.9)	5,500
GR3017A	.531 (13.5)	.125 (3.2)	.375 (9.5)	.750 (19.1)	.375 (9.5)	5,000
GR3065A	.563 (14.3)	.063 (1.6)	.313 (7.9)	.813 (20.6)	.313 (7.9)	4,000
GR3035A		.188 (4.8)	.375 (9.5)	.813 (20.6)	.375 (9.5)	5,000
GR3123A		.375 (9.5)	.375 (9.5)	.750 (19.1)	.750 (19.1)	2,000
GR3076A	.625 (15.9)	.063 (1.6)	.375 (9.5)	.875 (22.2)	.313 (7.9)	5,000
GR3150A		.125 (3.2)	.375 (9.5)	.875 (22.2)	.375 (9.5)	4,000
GR3110A		.250 (6.4)	.375 (9.5)	.875 (22.2)	.500 (12.7)	2,700
GR3183A		.375 (9.5)	.406 (10.3)	.813 (20.6)	.625 (15.9)	2,000
GR3131A	.688 (17.5)	.188 (4.8)	.438 (11.1)	.938 (23.8)	.438 (11.1)	3,000
GR3218A	.750 (19.1)	.156 (4.0)	.500 (12.7)	.938 (23.8)	.406 (10.3)	3,000
GR3132A	.813 (20.6)	.188 (4.8)	.500 (12.7)	1.063 (27.0)	.438 (11.1)	2,000
GR3134A		.188 (4.8)	.563 (14.3)	1.063 (27.0)	.438 (11.1)	1,600
GR3113A		.250 (6.4)	.563 (14.3)	1.063 (27.0)	.500 (12.7)	1,500
GR3080A	.875 (22.2)	.063 (1.6)	.625 (15.9)	1.125 (28.6)	.313 (7.9)	2,500
GR3155A		.125 (3.2)	.625 (15.9)	1.125 (28.6)	.375 (9.5)	2,400
GR3100A		.188 (4.8)	.563 (14.3)	1.063 (27.0)	.438 (11.1)	2,500
GR3135A		.188 (4.8)	.625 (15.9)	1.125 (28.6)	.438 (11.1)	2,000
GR3114A		.250 (6.4)	.625 (15.9)	1.125 (28.6)	.500 (12.7)	1,500
GR3101A		.375 (9.5)	.563 (14.3)	1.063 (27.0)	.625 (15.9)	1,500
GR3342A	.969 (24.6)	.375 (9.5)	.688 (17.5)	1.313 (33.3)	.625 (15.9)	1,000
GR3068A	1.000 (25.4)	.063 (1.6)	.688 (17.5)	1.313 (33.3)	.375 (9.5)	1,500

Continued ...

GR
Rubber Hole Grommet



Material: SBR, 60 Durometer Color: Black						
Part No.	"GD" Panel Hole Ø	"GW" Panel Thickness	I.D.	O.D.	"THK" Overall Thickness	Standard Pack
GR3156A	1.000 (25.4)	.125 (3.2)	.688 (17.5)	1.313 (33.3)	.438 (11.1)	1,500
GR3136A		.188 (4.8)	.688 (17.5)	1.313 (33.3)	.500 (12.7)	1,500
GR3115A		.250 (6.4)	.688 (17.5)	1.313 (33.3)	.563 (14.3)	1,200
GR3390A		.250 (6.4)	.875 (22.2)	1.250 (31.8)	.625 (15.9)	1,000
GR3219A	1.063 (27.0)	.266 (6.8)	.500 (12.7)	1.375 (34.9)	.500 (12.7)	1,100
GR3031A		.063 (1.6)	.750 (19.1)	1.375 (34.9)	.375 (9.5)	1,000
GR3157A		.125 (3.2)	.750 (19.1)	1.375 (34.9)	.438 (11.1)	1,400
GR3137A		.188 (4.8)	.750 (19.1)	1.375 (34.9)	.500 (12.7)	1,000
GR3116A	1.188 (30.2)	.250 (6.4)	.750 (19.1)	1.375 (34.9)	.563 (14.3)	1,200
GR3246A		.141 (3.6)	.875 (22.2)	1.375 (34.9)	.406 (10.3)	1,800
GR3158A		.125 (3.2)	.750 (19.1)	1.625 (41.3)	.313 (7.9)	1,300
GR3160A		.125 (3.2)	.875 (22.2)	1.625 (41.3)	.500 (12.7)	850
GR3259A	1.250 (31.8)	.125 (3.2)	.875 (22.2)	1.562 (39.7)	.750 (19.1)	550
GR3138A		.188 (4.8)	.875 (22.2)	1.625 (41.3)	.563 (14.3)	750
GR3117A		.250 (6.4)	.750 (19.1)	1.625 (41.3)	.438 (11.1)	1,000
GR3118A		.250 (6.4)	.875 (22.2)	1.625 (41.3)	.625 (15.9)	800
GR3062A	1.375 (34.9)	.250 (6.4)	1.000 (25.4)	1.500 (38.1)	.500 (12.7)	1,000
GR3410A		.470 (11.9)	.750 (19.1)	1.500 (38.1)	.660 (16.8)	600
GR3072A		.063 (1.6)	1.000 (25.4)	1.750 (44.5)	.438 (11.1)	700
GR3161A		.125 (3.2)	1.000 (25.4)	1.750 (44.5)	.500 (12.7)	700
GR3139A	1.500 (38.1)	.188 (4.8)	1.000 (25.4)	1.750 (44.5)	.563 (14.3)	500
GR3119A		.250 (6.4)	1.000 (25.4)	1.750 (44.5)	.625 (15.9)	500
GR3064A		.063 (1.6)	1.125 (28.6)	1.875 (47.6)	.375 (9.5)	700
GR3180A		.156 (4.0)	1.188 (30.2)	1.750 (44.5)	.406 (10.3)	800
GR3262A	1.625 (41.3)	.250 (6.4)	1.250 (31.8)	2.000 (50.8)	.516 (13.1)	500
GR3267A		.250 (6.4)	1.250 (31.8)	1.750 (44.5)	.500 (12.7)	600
GR3087A		.063 (1.6)	.875 (22.2)	2.000 (50.8)	.438 (11.1)	600
GR3383A		.125 (3.2)	1.375 (34.9)	1.875 (47.6)	.406 (10.3)	750
GR3266A	1.703 (43.3)	.188 (4.8)	1.250 (31.8)	1.875 (47.6)	.500 (12.7)	700
GR3173A		.516 (13.1)	1.500 (38.1)	2.094 (53.2)	.752 (19.1)	400
GR3073A		.063 (1.6)	1.500 (38.1)	2.125 (54.0)	.438 (11.1)	500
GR3409A		.075 (1.9)	1.625 (41.3)	2.100 (53.3)	.260 (6.6)	900
GR3163A	1.750 (44.5)	.125 (3.2)	1.500 (38.1)	2.125 (54.0)	.500 (12.7)	600
GR3141A		.188 (4.8)	1.500 (38.1)	2.125 (54.0)	.563 (14.3)	500
GR3121A		.250 (6.4)	1.500 (38.1)	2.125 (54.0)	.625 (15.9)	400
GR3295A		.375 (9.5)	1.500 (38.1)	2.125 (54.0)	.750 (19.1)	300
GR3301A	2.000 (50.8)	.094 (2.4)	1.500 (38.1)	2.375 (60.3)	.375 (9.5)	450
GR3239A		.188 (4.8)	1.625 (41.3)	2.250 (57.2)	.750 (19.1)	600
GR3296A		.250 (6.4)	1.750 (44.5)	2.500 (63.5)	.531 (13.5)	300
GR3334A		.250 (6.4)	1.750 (44.5)	2.500 (63.5)	.560 (14.2)	300
GR3145A	2.500 (63.5)	.063 (1.6)	2.125 (54.0)	2.875 (73.0)	.438 (11.1)	300
GR3318A		.250 (6.4)	2.000 (50.8)	3.000 (76.2)	.563 (14.3)	200
GR3404A		.250 (6.4)	2.250 (57.2)	3.000 (76.2)	.625 (15.9)	175
GR3405A		.328 (8.3)	2.250 (57.2)	3.000 (76.2)	.719 (18.3)	175
GR3406A		.375 (9.5)	2.250 (57.2)	3.000 (76.2)	.750 (19.1)	175