

# DK Series

## Enhanced Performance K Series RFI Power Line Filters



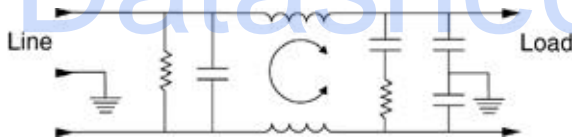
**UL Recognized  
CSA Certified  
VDE Approved**

### DK Series

The DK series RFI power line filters are general purpose common mode and differential mode filters with higher performance line-to-line attenuation than the VK series.

The EDK series has the same high performance line-to-line attenuation while still meeting the very low leakage current requirements of VDE portable equipment and UL544 nonpatient care equipment.

### Electrical Schematic



Resistor location for reference only.



### Specifications

Maximum leakage current, each line-to-ground

	<b>VDK Models</b>	<b>EDK Models</b>
@ 120 VAC 60 Hz:	.4 mA	.22 mA
@ 250 VAC 50 Hz:	.7 mA	.38 mA

Hipot rating (one minute):

line-to-ground	2250 VDC
line-to-line	1450 VDC

Operating frequency:

50/60 Hz

Rated voltage:

120/250 VAC

Rated current:

	<b>@ 120 VAC</b>	<b>@ 250 VAC</b>
1VDK/1EDK	1A	1A
3VDK/3EDK	3A	3A
6VDK/6EDK	6A	6A
10VDK/10EDK	10A	8A
20EDK/20EDK	20A	16A

**Minimum** insertion loss in dB:

Line-to-ground in 50 ohm circuit

Current Rating	Frequency-MHz					
	.15	.5	1	5	10	30
<b>VDK Models</b>						
1A, 3A	18	30	40	48	48	40
6A, 10A, 20A	10	22	30	39	44	50
<b>EDK Models</b>						
1A, 3A	17	27	33	45	45	40
6A, 10A, 20A	10	19	25	34	40	46

Line-to-line in 50 ohm circuit

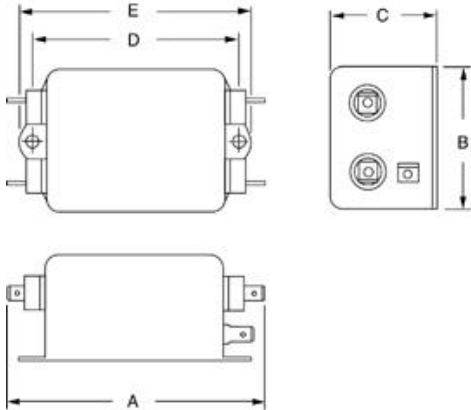
Current Rating	Frequency-MHz					
	.15	.5	1	5	10	30
<b>VDK, EDK Models</b>						
1A, 3A	18	47	62	60	50	45
6A, 10A, 20A	20	43	55	65	60	55

# Series DK

## Case Styles

Metric shown in italics.

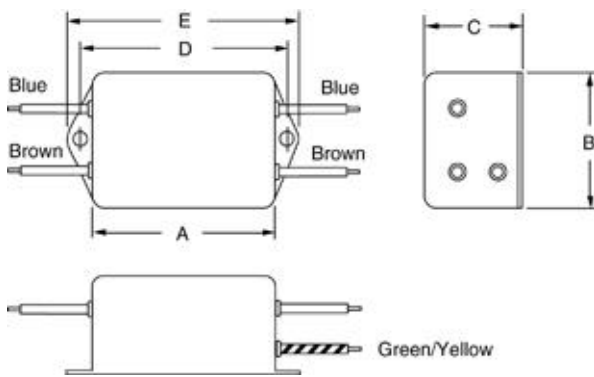
### VDK1/EDK1



Typical dimensions

Terminals:  $\frac{.250}{6.35}$  (5) Holes:  $\frac{.07}{1.8}$  Dia.(4) Slot:  $\frac{.07 \times .16}{1.8 \times 4.1}$  Mounting holes:  $\frac{.188}{4.78}$  Dia.(2)

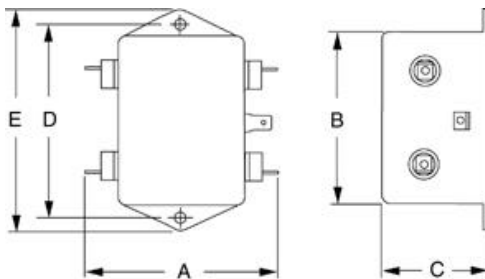
### VDK3/EDK3



Typical dimensions

Wire leads:  $\frac{4.0}{101.6}$  Min. Mounting holes:  $\frac{.188}{4.78}$  Dia. (2)

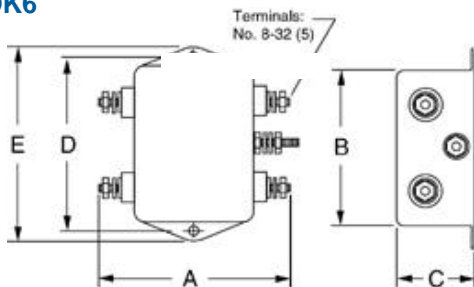
### 20VDK1/20EDK1



Typical dimensions

Terminals:  $\frac{.250}{6.35}$  (5) Holes:  $\frac{.07}{1.8}$  Dia.(4) Slot:  $\frac{.07 \times .16}{1.8 \times 4.1}$  Mounting holes:  $\frac{.188}{4.78}$  Dia.(2)

### 20VDK6



Torque 18± 2 in.lb.

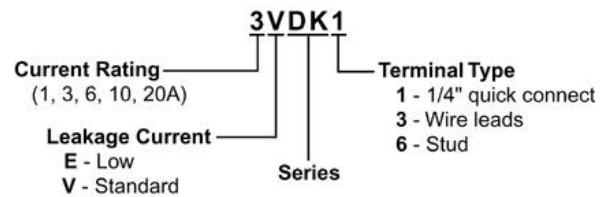
## Case Dimensions

Metric shown in italics.

Part No.	A (max)	B (max)	C (max)	D $\pm .015$ $\pm .38$	E (max)
1VDK1, 1EDK1	$\frac{3.35}{85.1}$	$\frac{2.07}{52.6}$	$\frac{1.16}{29.5}$	$\frac{2.375}{60.33}$	$\frac{2.81}{71.4}$
1VDK3, 1EDK3	$\frac{2.07}{52.6}$	$\frac{2.07}{52.6}$	$\frac{1.16}{29.5}$	$\frac{2.375}{60.33}$	$\frac{2.81}{71.4}$
3VDK1, 3EDK1	$\frac{3.85}{97.8}$	$\frac{2.07}{52.6}$	$\frac{1.16}{29.5}$	$\frac{2.938}{74.63}$	$\frac{3.35}{85.1}$
6VDK1, 6EDK1	$\frac{97.8}{97.8}$	$\frac{52.6}{52.6}$	$\frac{29.5}{29.5}$	$\frac{74.63}{74.63}$	$\frac{85.1}{85.1}$
3VDK3, 3EDK3	$\frac{2.56}{65.0}$	$\frac{2.07}{52.6}$	$\frac{1.16}{29.5}$	$\frac{2.938}{74.63}$	$\frac{3.35}{85.1}$
6VDK3, 6EDK3	$\frac{65.0}{65.0}$	$\frac{52.6}{52.6}$	$\frac{29.5}{29.5}$	$\frac{74.63}{74.63}$	$\frac{85.1}{85.1}$
10VDK1, 10EDK1	$\frac{3.85}{97.8}$	$\frac{2.07}{52.6}$	$\frac{1.32}{33.5}$	$\frac{2.938}{74.63}$	$\frac{3.35}{85.1}$
10VDK3, 10EDK3	$\frac{2.57}{65.3}$	$\frac{2.07}{52.6}$	$\frac{1.32}{33.5}$	$\frac{2.938}{74.63}$	$\frac{3.35}{85.1}$
20VDK1, 20EDK1	$\frac{3.85}{97.8}$	$\frac{2.58}{65.5}$	$\frac{1.78}{45.2}$	$\frac{2.938}{74.63}$	$\frac{3.35}{85.1}$
20VDK6	$\frac{3.46}{87.9}$	$\frac{2.58}{65.5}$	$\frac{1.78}{45.2}$	$\frac{2.938}{74.63}$	$\frac{3.35}{85.1}$

## Ordering Information

Consult your local Corcom sales representative for pricing.



## Available Part Numbers

1VDK1	1EDK1
1VDK3	1EDK3
3VDK1	3EDK1
3VDK3	3EDK3
6VDK1	6EDK1
6VDK3	6EDK3
10VDK1	10EDK1
10VDK3	10EDK3
20VDK1	20EDK1
20VDK6	