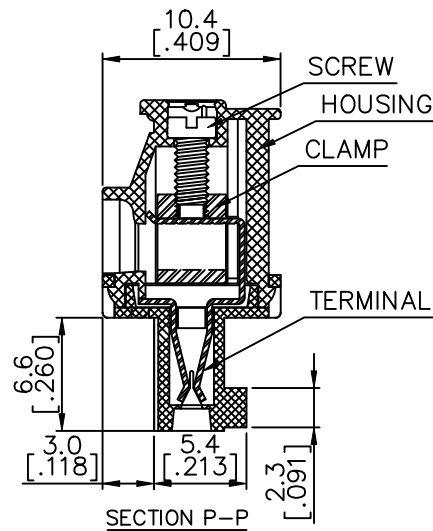
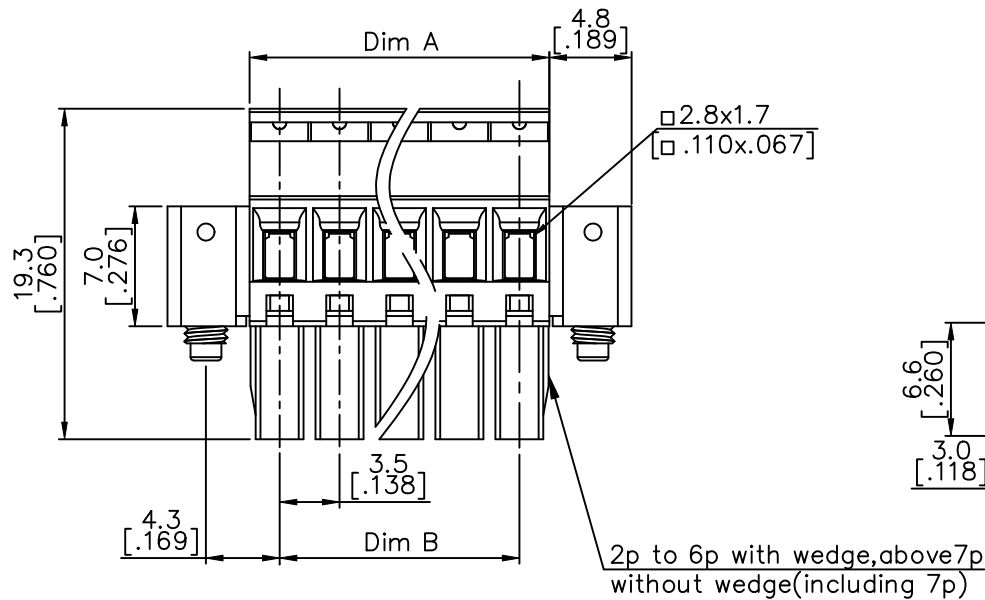
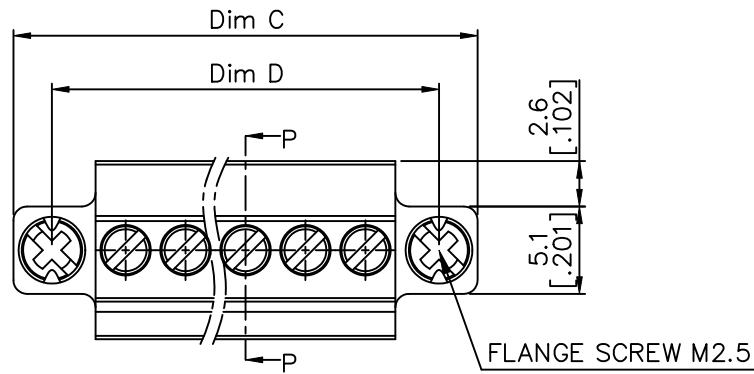




PRODUCT NUMBER	SERIES NAME	PITCH
20020011-CXXXXXXLF	02-350	3.50 mm



N = Number of poles

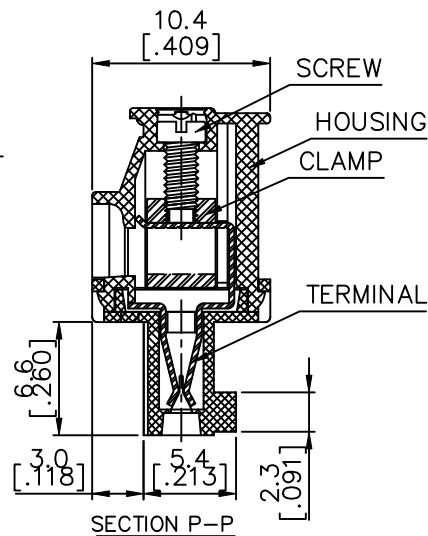
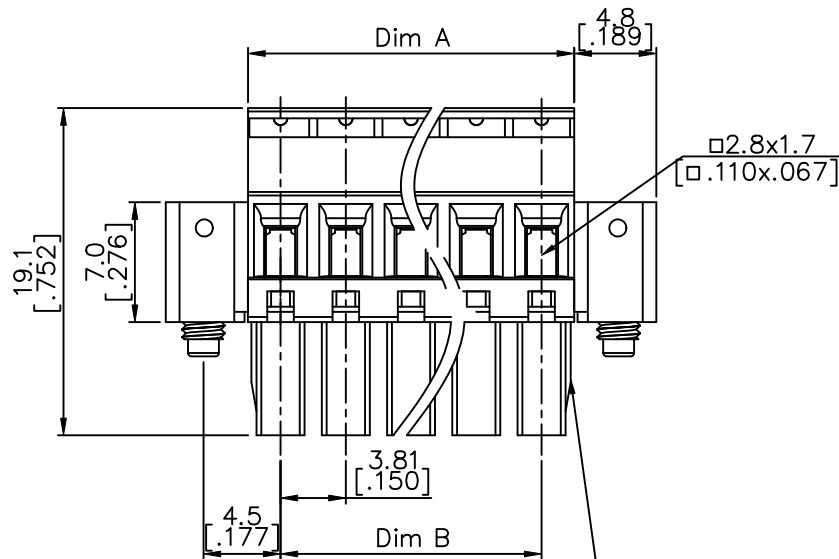
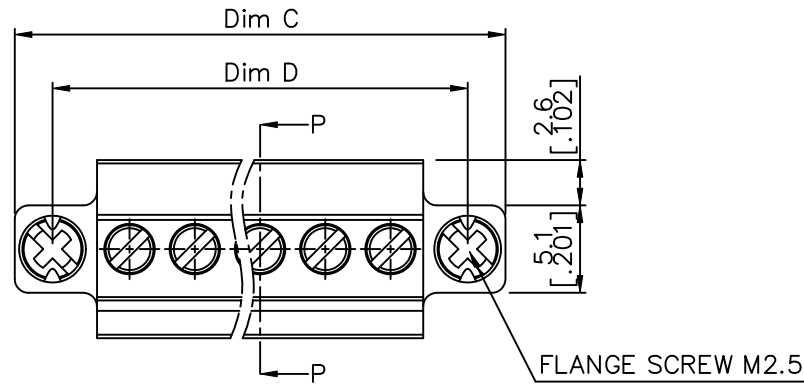
Dim A	$N \times 3.5 [0.138]$
Dim B	$(N-1) \times 3.5 [0.138]$
Dim C	$N \times 3.5 [0.138] + 9.6 [0.378]$
Dim D	$(N-1) \times 3.5 [0.138] + 8.6 [0.339]$

poles	Tolerance
2-4p	$\pm 0.10 [0.004]$
5-7p	$\pm 0.15 [0.006]$
8-12p	$\pm 0.20 [0.008]$
13-18p	$\pm 0.25 [0.010]$
19-24p	$\pm 0.30 [0.012]$

mat'l. code	surface ASME Y14.5 ✓	tolerance ASME Y14.5	projection 	product family TERMINAL BLOCK
ltr	ecn no	dr	date	title TERMINAL BLOCK PLUGGABLE PLUG, BACK SIDE HOOK, W/FLANGE
E				MM INCH
	angles	tolerance	scale	sheet 2 of 5 size
	X°±1'	X.X±0.3		20020011
		X.XX±0.1		A4
	dr	WENDY CHEN	051810	type CUSTOMER Drawing
	enr	JASON HSU	051810	
	chr	GARY HSIEH	051810	
	appd	JOSEPH HSIA	051810	
sheet index	revision sheet			



PRODUCT NUMBER	SERIES NAME	PITCH
20020011-DXXXXXXLF	02-381	3.81 mm



N = Number of poles

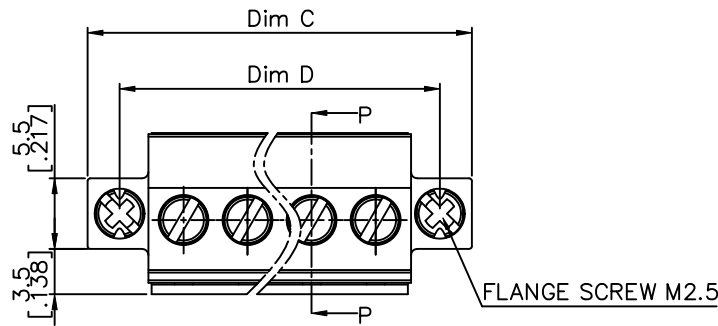
Dim A	$N \times 3.81 [ .150 ]$
Dim B	$(N-1) \times 3.81 [ .150 ]$
Dim C	$N \times 3.81 [ .150 ] + 9.6 [ .378 ]$
Dim D	$(N-1) \times 3.81 [ .150 ] + 9.0 [ .354 ]$

poles	Tolerance
2-6P	$\pm 0.15 [ .006 ]$
7-12p	$\pm 0.20 [ .008 ]$
13-17p	$\pm 0.25 [ .010 ]$
18-24p	$\pm 0.30 [ .012 ]$

2p to 6p with wedge, above 7p without wedge (including 7p)

mat'l. code	surface ASME Y14.5	tolerance ASME Y14.5	projection MM INCH	product family TERMINAL BLOCK
ltr	ecn no	dr	date	title TERMINAL BLOCK PLUGGABLE PLUG, BACK SIDE HOOK, W/FLANGE
E				dwg no 20020011
	angles	linear	scale	sheet 3 of 5 size A4
	X°±1'	X.XX±0.1		type CUSTOMER Drawing
	dr	WENDY CHEN	051810	
	enr	JASON HSU	051810	
	chr	GARY HSIEH	051810	
	appd	JOSEPH HSIA	051810	
sheet index	revision sheet			

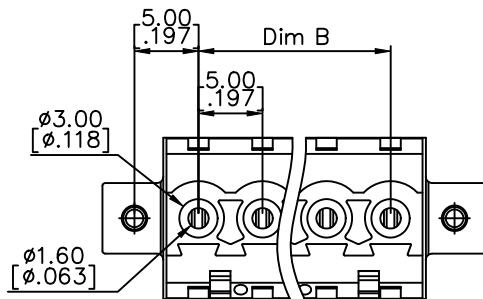
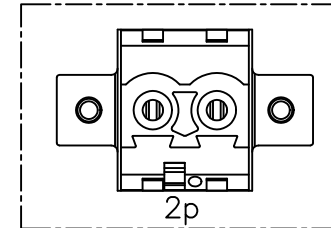
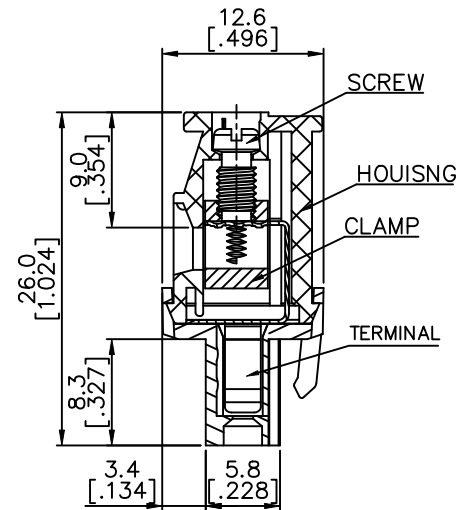
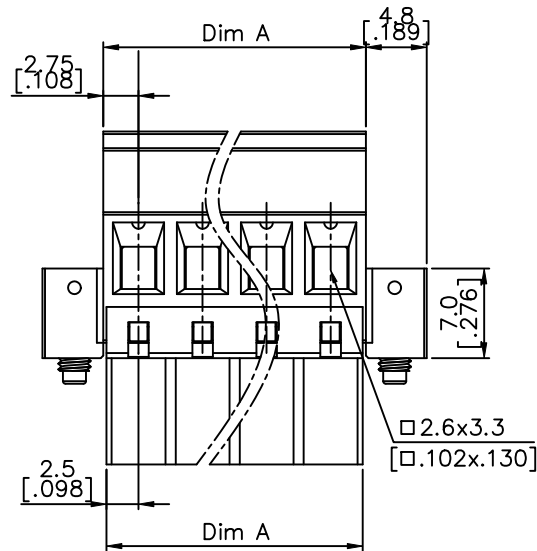
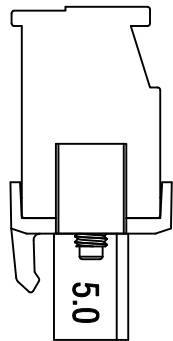
PRODUCT NUMBER	SERIES NAME	PITCH
20020011-GXXXXXXLF	02-500	5.00 mm



N = Number of poles

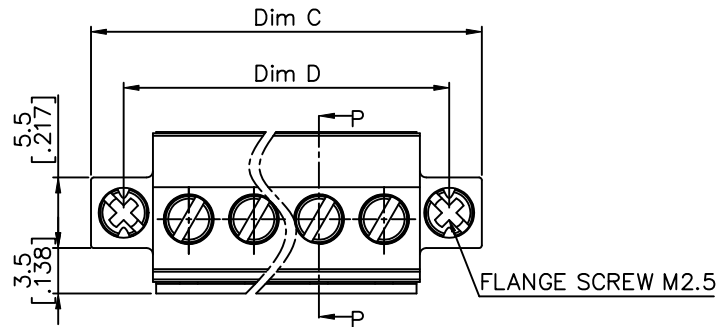
Dim A	$N \times 5.0 [.197] + 0.5 [.020]$
Dim B	$(N-1) \times 5.0 [.197]$
Dim C	$N \times 5.0 [.197] + 10.0 [.394]$
Dim D	$(N+1) \times 5.0 [.197]$

poles	Tolerance
2-6p	$\pm 0.15 [.006]$
7-12p	$\pm 0.20 [.008]$
13-18p	$\pm 0.30 [.012]$
19-24p	$\pm 0.40 [.016]$



mat'l. code	surface ASME Y14.5	tolerance ASME Y14.5	projection 	product family TERMINAL BLOCK
ltr	ecn no	dr	date	title
E				TERMINAL BLOCK PLUGGABLE PLUG, BACK SIDE HOOK, W/FLANGE
	angles	metal	tolerance unless otherwise specified	MM INCH
	$X \pm 1$		$X \pm 0.5$ $X.X \pm 0.3$ $X.XX \pm 0.1$	scale
	dr	WENDY CHEN	051810	sheet 4 of 5 size
	enr	JASON HSU	051810	
	chr	GARY HSIEH	051810	
	appd	JOSEPH HSIA	051810	
sheet index	revision sheet			FCI type CUSTOMER Drawing

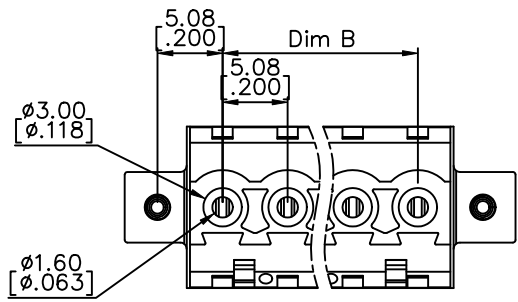
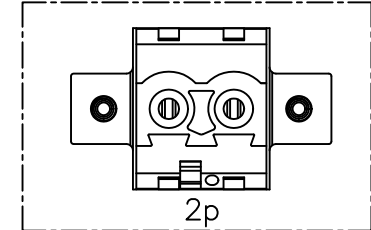
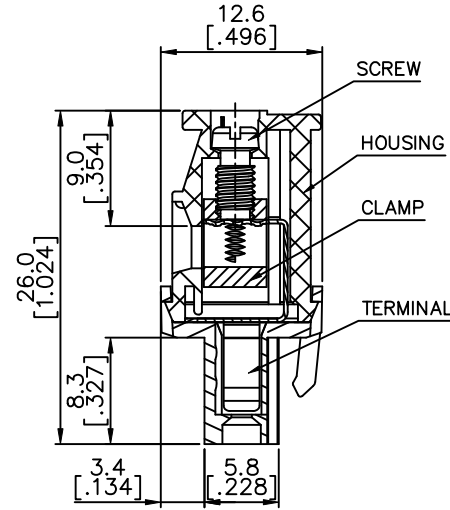
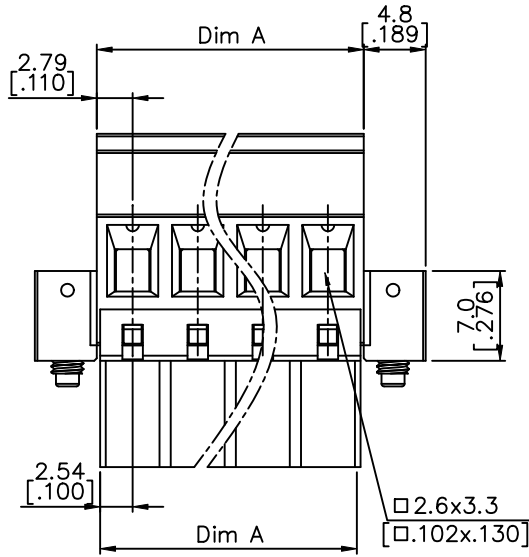
PRODUCT NUMBER	SERIES NAME	PITCH
20020011-HXXXXXLf	02-508	5.08 mm



N = Number of poles

Dim A	$N \times 5.08 [.200] + 0.5 [.020]$
Dim B	$(N-1) \times 5.08 [.200]$
Dim C	$N \times 5.08 [.200] + 9.66 [.380]$
Dim D	$(N+1) \times 5.08 [.200]$

poles	Tolerance
2-6p	$\pm 0.15 [.006]$
7-12p	$\pm 0.20 [.008]$
13-18p	$\pm 0.30 [.012]$
19-24p	$\pm 0.40 [.016]$



mat'l. code	surface ASME Y14.5	tolerance ASME Y14.5	projection MM INCH	product family TERMINAL BLOCK
ltr	ecn no	dr	date	title TERMINAL BLOCK PLUGGABLE PLUG, BACK SIDE HOOK, W/FLANGE
E				sheet 5 of 5 size
				20020011 A4
				type CUSTOMER Drawing
sheet index	revision sheet			