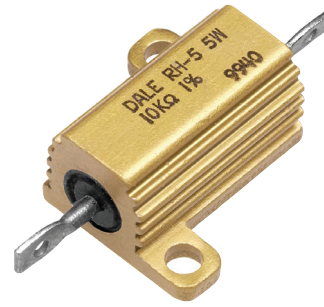




RH Series Aluminum-Housed Wirewound Resistors

Complete welded and molded construction for total environmental protection in aluminum housed wirewound chassis mount resistor. Mounts on chassis to utilize heat-sink effect. High stability at conventional power ratings. Flat marking surface for easy identification. Series has ceramic, steatite or alumina core (depending on size). Copper-nickel, manganese copper or nickel-chrome alloy element (depending on resistance value) with stainless steel end caps and tinned Copperweld® terminals. **Operating Temperature Range:** -55°C to +275°C.

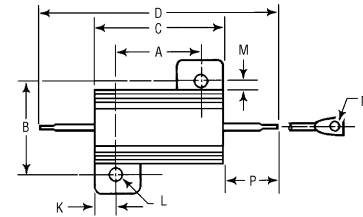
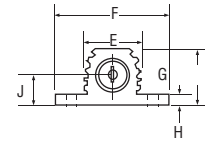


- ▶ 5 Watt to 50 Watt at 25°C
- ▶ NF C 83-210
- ▶ CECC 40 203
- ▶ High Stability <0.05% Year
- ▶ Low Temperature Coefficient Typically ±15 ppm/°C
- ▶ Wire Range of Values From 0.006 Ω to 130 KΩ
- ▶ Termination: Sn/Ag/Cu
- ▶ Tolerance: 1%

Dimensions — In.

Mfr.'s Type	A	B	C	D	E	F	G	H	J	K	L	M	N	P
RH-5	0.444	0.490	0.600	1.125	0.334	0.646	0.320	0.065	0.133	0.078	0.093	0.078	0.050	0.266
RH-10	0.562	0.625	0.750	1.375	0.420	0.800	0.390	0.075	0.165	0.093	0.094	0.102	0.085	0.312
RH-25	0.719	0.781	1.062	1.938	0.550	1.080	0.546	0.075	0.231	0.172	0.125	0.115	0.085	0.438
RH-50	1.562	0.844	1.968	2.781	0.630	1.140	0.610	0.088	0.260	0.196	0.125	0.107	0.085	0.438

NOTE: Figures in parentheses on RH-5 and RH-10 indicate wattage printed on parts, new construction allows these resistors to be rated at higher wattage but will only be printed with the higher wattage on customer request.



Stock No.	Mfr.'s Type	Ohm Value	Watts (@ 25°C)	EACH		
				1-49	50-99	100-249
70201493	RH005R1000FE02	0.1	7.5 (5)	3.09	2.82	2.58
70201533	RH005R1000FE02	1	7.5 (5)	2.92	2.74	2.65
70201537	RH005R2000FE02	2	7.5 (5)	2.92	2.74	2.65
70201543	RH005R5000FE02	5	7.5 (5)	2.92	2.74	2.65
70201534	RH005R1000FE02	10	7.5 (5)	2.92	2.74	2.65
70201538	RH005R2000FE02	20	7.5 (5)	2.92	2.74	2.65
70201541	RH005R3000FE02	30	7.5 (5)	2.92	2.74	2.65
70201544	RH005R5000FE02	50	7.5 (5)	2.92	2.74	2.65
70201694	RH005R6000FE02	60	7.5 (5)	2.92	2.74	2.65
70201545	RH005R7500FE02	75	7.5 (5)	2.92	2.74	2.65
70201535	RH005R1000FE02	100	7.5 (5)	2.92	2.74	2.65
70201536	RH005R1500FE02	150	7.5 (5)	2.92	2.74	2.65
70201539	RH005R2000FE02	200	7.5 (5)	2.92	2.74	2.65
70201540	RH005R2500FE02	250	7.5 (5)	2.92	2.74	2.65
70201495	RH005R1000FE02	1K	7.5 (5)	2.92	2.74	2.65
70201623	RH005R2000FE02	2K	7.5 (5)	2.89	2.41	2.23
70201494	RH005R1000FE02	10K	7.5 (5)	2.89	2.41	2.23
70201441	RH010R000FE02	1	12.5 (10)	2.54	2.04	1.85
70201974	RH010R000FE02	2	12.5 (10)	2.54	2.04	1.85
70201453	RH010R000FE02	5	12.5 (10)	2.54	2.04	1.85
70201442	RH010R1000FE02	10	12.5 (10)	2.54	2.04	1.85
70201598	RH010R1500FE02	15	12.5 (10)	3.43	2.76	2.50
70202065	RH010R2000FE02	20	12.5 (10)	3.43	2.76	2.50
70201448	RH010R2500FE02	25	12.5 (10)	2.54	2.04	1.85
70201449	RH010R3000FE02	30	12.5 (10)	2.54	2.04	1.85
70201450	RH010R4000FE02	40	12.5 (10)	2.54	2.04	1.85
70201454	RH010R5000FE02	50	12.5 (10)	2.54	2.04	1.85
70201456	RH010R6000FE02	60	12.5 (10)	3.43	2.76	2.50
70201443	RH010R1000FE02	100	12.5 (10)	2.54	2.04	1.85
70201445	RH010R1500FE02	150	12.5 (10)	2.54	2.04	1.85
70201447	RH010R2000FE02	200	12.5 (10)	2.54	2.04	1.85
70201631	RH010R3000FE02	300	12.5 (10)	2.54	2.04	1.85
70201452	RH010R4000FE02	400	12.5 (10)	2.54	2.04	1.85
70201451	RH010R4000FE02	470	12.5 (10)	2.54	2.04	1.85
70201446	RH010R1000FE02	1K	12.5 (10)	2.54	2.04	1.85
70201638	RH010R2000FE02	2K	12.5 (10)	2.61	1.95	1.78
70201675	RH010R2500FE02	2.5K	12.5 (10)	2.62	1.96	1.79
70201455	RH010R5000FE02	5K	12.5 (10)	2.61	1.95	1.78
70201444	RH010R1000FE02	10K	12.5 (10)	2.61	1.95	1.78
70201467	RH025R1000FE02	0.1	25	6.49	6.08	5.90
70201468	RH025R1000FE02	1	25	3.38	3.13	3.03
70201457	RH025R5000FE02	1.5	25	3.38	3.13	3.03
70201475	RH025R2000FE02	2	25	3.38	3.13	3.03
70201480	RH025R3000FE02	3	25	3.38	3.13	3.03
70201460	RH025R3000FE02	3.3	25	3.38	3.13	3.03
70201485	RH025R4000FE02	4	25	3.38	3.13	3.03
70201487	RH025R5000FE02	5	25	3.38	3.13	3.03
70201712	RH025R6000FE02	6	25	3.38	3.13	3.03
70201462	RH025R7500FE02	7.5	25	3.38	3.13	3.03
70201770	RH025R8000FE02	8	25	3.38	3.13	3.03
70201458	RH025R1000FE02	10	25	3.38	3.13	3.03
70201459	RH025R1200FE02	12	25	3.38	3.13	3.03
70201472	RH025R1500FE02	15	25	3.38	3.13	3.03
70201476	RH025R2000FE02	20	25	3.38	3.13	3.03
70201478	RH025R2500FE02	25	25	3.38	3.13	3.03
70201482	RH025R3000FE02	30	25	3.38	3.13	3.03
70201700	RH025R3300FE02	33	25	3.38	3.13	3.03
70201486	RH025R4000FE02	40	25	3.38	3.13	3.03
70201645	RH025R4700FE02	47	25	3.38	3.13	3.03
70201488	RH025R5000FE02	50	25	3.38	3.13	3.03
70201491	RH025R6000FE02	60	25	3.38	3.13	3.03

Stock No.	Mfr.'s Type	Ohm Value	Watts (@ 25°C)	EACH		
				1-49	50-99	100-249
70201464	RH025R7500FE02	75	25	3.38	3.13	3.03
70201470	RH025R1000FE02	100	25	3.38	3.13	3.03
70201473	RH025R1500FE02	150	25	3.38	3.13	3.03
70201477	RH025R2000FE02	200	25	3.38	3.13	3.03
70202041	RH025R3000FE02	300	25	3.38	3.13	3.03
70201483	RH025R3300FE02	250	25	3.38	3.13	3.03
70201489	RH025R5000FE02	500	25	3.38	3.13	3.03
70201492	RH025R5000FE02	750	25	3.38	3.13	3.03
70201474	RH025R1000FE02	1K	25	3.38	3.13	3.03
70201469	RH025R1K500FE02	1.5K	25	2.71	2.51	2.42
70201665	RH025R2K000FE02	2K	25	2.71	2.51	2.42
70201682	RH025R2K500FE02	2.5K	25	2.71	2.51	2.42
70201484	RH025R3K000FE02	3K	25	2.71	2.51	2.42
70201474	RH025R4K000FE02	4K	25	2.71	2.51	2.42
70201490	RH025R5K000FE02	5K	25	2.71	2.51	2.42
70201471	RH025R10K00FE02	10K	25	2.71	2.51	2.42
70201798	RH025R20K00FE02	20K	25	3.36	3.12	3.00
70201479	RH025R25K00FE02	25K	25	3.37	3.12	3.01
70201505	RH050R1000FE02	0.1	50	7.96	7.39	7.13
70201506	RH050R1000FE02	1	50	4.15	3.85	3.71
70201507	RH050R1R500FE02	1.5	50	4.15	3.85	3.71
70201514	RH050R2R000FE02	2	50	4.15	3.85	3.71
70201519	RH050R3R000FE02	3	50	4.15	3.85	3.71
70201971	RH050R3R300FE02	3.3	50	4.15	3.85	3.71
70201503	RH050R5R000FE02	5	50	4.15	3.85	3.71
70201528	RH050R6R000FE02	6	50	4.15	3.85	3.71
70201530	RH050R7R500FE02	7.5	50	4.15	3.85	3.71
70201532	RH050R8R000FE02	8	50	4.15	3.85	3.71
70201508	RH050R10R00FE02	10	50	4.15	3.85	3.71
70201510	RH050R12R00FE02	12	50	4.15	3.85	3.71
70201511	RH050R15R00FE02	15	50	4.15	3.85	3.71
70201515	RH050R20R00FE02	20	50	4.15	3.85	3.71
70201517	RH050R25R00FE02	25	50	4.15	3.85	3.71
70201520	RH050R30R00FE02	30	50	4.15	3.85	3.71
70201522	RH050R33R00FE02	33	50	4.15	3.85	3.71
70201523	RH050R35R00FE02	35	50	4.15	3.85	3.71
70201524	RH050R40R00FE02	40	50	4.15	3.85	3.71
70201594	RH050R47R00FE02	47	50	4.15	3.85	3.71
70201527	RH050R50R00FE02	50	50	4.15	3.85	3.71
70201529	RH050R60R00FE02	60	50	4.15	3.85	3.71
70201531	RH050R75R00FE02	75	50	4.15	3.85	3.71
70201509	RH050R100R0FE02	100	50	4.15	3.85	3.71
70201512	RH050R150R0FE02	150	50	4.15	3.85	3.71
70201516	RH050R200R0FE02	200	50	4.15	3.85	3.71
70201518	RH050R250R0FE02	250	50	4.15	3.85	3.71
70201521	RH050R300R0FE02	300	50	4.15	3.85	3.71
70201525	RH050R400R0FE02	400	50	4.15	3.85	3.71
70201526	RH050R470R0FE02	470	50	4.15	3.85	3.71
70201972	RH050R500R0FE02	500	50	4.15	3.85	3.71
70201625	RH050R500R0FE02	750	50	4.15	3.85	3.71
70201513	RH050R1K000FE02	1K	50	4.15	3.85	3.71
70201973	RH050R1K200FE02	1.2K	50	3.52	3.27	3.15
70201496	RH050R1K500FE02	1.5K	50	3.52	3.27	3.15
70201500	RH050R2K000FE02	2K	50	3.52	3.27	3.15
70201499	RH050R2K500FE02	2.5K	50	3.52	3.27	3.15
70201501	RH050R3K000FE02	3K	50	3.52	3.27	3.15
70201504	RH050R5K000FE02	5K	50	3.52	3.27	3.15
70201617	RH050R10K00FE02	10K	50	3.52	3.27	3.15
70201498	RH050R15K00FE02	15K	50	4.70	4.36	4.21
70201684	RH050R25K00FE02	25K	50	4.70	4.36	4.21
70201502	RH050R40K00FE02	40K	50	4.70	4.36	4.21
70201497	RH050R100K0FE02	100K	50	4.70	4.36	4.21