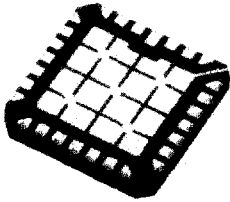


SURFACE MOUNT DEVICES

SMALL SIGNAL TRANSISTORS

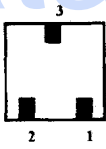
PACKAGE
LCC-28



DEVICE TYPE	BV _{CEO} VOLTS	PEAK I _C AMPS	h _{FE} MIN/MAX	I _C @ V _{CE} A V	V _{CE} (sat)	
					MAX VOLTS	I _C @ I _B A A
SPP0404	80	2.0	20-100	1.0/5.0	0.6	2.0/0.2
SPP0405	100	2.0	20-100	1.0/5.0	0.6	2.0/0.2
SPP0407	150	2.0	20-100	0.5/5.0	0.6	1.0/0.1
SPP0410	80	5.0	20-100	1.0/5.0	0.5	5.0/0.5
SPP0411	100	5.0	20-100	1.0/5.0	0.5	5.0/0.5
SPP0413	150	5.0	20-100	1.0/5.0	0.6	5.0/0.5
SPP0416	80	10.0	20-100	1.0/5.0	0.8	10.0/1.0
SPP0417	100	10.0	20-100	1.0/5.0	0.8	10.0/1.0
SPP0419	150	10.0	20-100	1.0/5.0	0.9	10.0/1.0
SPP0422	80	5.0	1000 min	5.0/5.0	1.3	5.0/0.020
SPP0423	100	5.0	1000 min	5.0/5.0	1.3	5.0/0.020
SPP0425	150	5.0	500 min	5.0/5.0	1.3	5.0/0.20

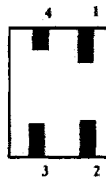
SMALL SIGNAL TRANSISTORS - PNP

PACKAGE
LCC-3



DEVICE TYPE	BV _{CEO} VOLTS	PEAK I _C (mA)	h _{FE} MIN/MAX	I _C @ V _{CE} (mA) (V)	V _{CE} (sat)	
					MAX (V)	I _C @ I _B (nA) (nA)
2N2222AUB**	50	800	100/300	150/10	0.3	150/15
2N2369AUB	15	200	40/120	3/0.4	0.2	10/1

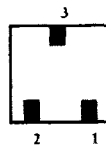
LCC-4



2N2222AUA**	50	800	100/300	150/10	0.2	150/15
2N2369AUA	15	200	40/120	3/0.4	0.2	10/1

SMALL SIGNAL TRANSISTORS - PNP

PACKAGE
LCC-3



DEVICE TYPE	BV _{CEO} VOLTS	PEAK I _C (mA)	h _{FE} MIN/MAX	I _C @ V _{CE} (mA) (V)	V _{CE} (sat)	
					MAX (V)	I _C @ I _B (nA) (nA)
2N2906AUB**	60	600	40/120	150/10	0.4	150/15
2N2907AUB**	60	600	100/300	150/10	0.4	150/15

LCC-4



2N2906AUA**	60	600	40/120	150/10	0.4	150/15
2N2907AUA**	60	600	100/300	150/10	0.4	150/15

Electrical Characteristics at 25°C unless otherwise noted.
**Available in JANTEX and TXV