

TO-92

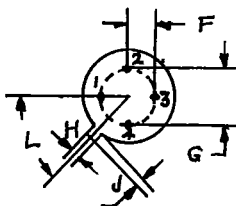
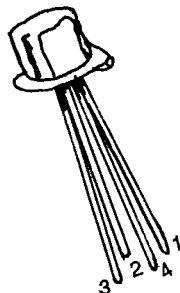
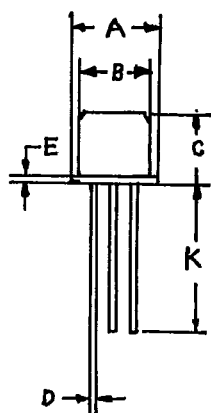
PLASTIC PACKAGE TRANSISTORS (PNP)

Maximum Ratings				Electrical Characteristics										(Ta=25°C, Unless Otherwise Specified)													
Type No.	V _{CBO} (V) Min	V _{CEO} (V) Min	V _{EBO} (V) Min	I _{CBO} (μA) Max	β	V _{CB} (V)	h _{FE}	β	I _C (mA)	V _{CE} (V)	V _{CE(Sat)} (V) Max	V _{BE(Sat)} (V) Min	β	I _C (mA)	I _{CES} (μA) Max	V _{CE} (V)	C _{ob} (pF) Min	Max	f _T (MHz) Min	β	I _C (mA)	t _{off} (ns) Max	NF (dB) Max	β	Freq (MHz)	C _{re} (pF) Max	CDIL Case Style
BC307B	50	45					200	460	2.00	5.0	0.30			10	.015	50		6.0						10.0	0.001		TO-92-4
BC327	50	45	5	0.100	30		40		300.00	1.0	0.70			500	.100	45		4.0				10		4.0			TO-92-4
							100	630	100.00	1.0																	TO-92-4
BC327-10	50	45	5	0.100	45		40		300.00	1.0	0.70			500	.100	45						10		4.0			TO-92-4
							63	160	100.00	1.0																	TO-92-4
BC327-16	50	45	5	0.100	30		40	250	300.00	1.0	0.70	1.20		500	.100	45						10					TO-92-4
							100	250	100.00	1.0	0.70	1.20		300													TO-92-4
BC327-25	50	45	5	0.100	30		40	400	300.00	1.0	0.70	1.20		500	.100	45						10					TO-92-4
							160	400	100.00	1.0	0.70	1.20		300													TO-92-4
BC327-40	50	45	5	0.100	30		250	600	100.00	1.0	0.70			500	.100	45						10					TO-92-4
							40		500.00	1.0																	TO-92-4
BC557	50	45	5				120	800	2.00	5.0	0.30			10	.100	20		6.0	150			10		10.0	0.001		TO-92-4
											0.65			100													TO-92-4
BC557A	50	45	5				120	220	2.00	5.0	0.30			10	.100	20		6.0	150			10		10.0	0.001		TO-92-4
											0.65			100													TO-92-4
BC557B	50	45	5				180	400	2.00	5.0	0.30			10	.100	20		6.0	150			10		10.0	0.001		TO-92-4
											0.65			100													TO-92-4
BC557C	50	45	5				420	800	2.00	5.0	0.30			10	.100	20		6.0	150			10		10.0	0.001		TO-92-4
											0.65			100													TO-92-4
BC560	50	45	5	0.150	30		125	800	2.00	5.0	0.30			10				6.0	150			10		4.0	0.001		TO-92-4
											0.65			100													TO-92-4
BC560A	50	45	5	0.150	30		125	250	2.00	5.0	0.30			10				6.0	150			10		4.0	0.001		TO-92-4
											0.65			100													TO-92-4
BC560B	50	45	5	0.150	30		220	475	2.00	5.0	0.30			10				6.0	150			10		4.0	0.001		TO-92-4
							100		0.01	5.0	0.65			100													TO-92-4
BC560C	50	45	5	0.150	30		420	800	2.00	5.0	0.30			10				6.0	150			10		4.0	0.001		TO-92-4
							100		0.01	5.0	0.65			100													TO-92-4
BC636	45	45	5	0.100	30		25		5.00	2.0	0.50			500				50				10					TO-92-1
							40	250	150.00	2.0																	TO-92-1
							25		500.00	2.0																	TO-92-1
BCX79	45	45	5				80	1000	10.00	1.0	0.60	1.00		100	.010	45		4.5						6.0	0.001		TO-92-4
							40		100.00	1.0																	TO-92-4
							120	630	2.00	5.0																	TO-92-4
							20		0.01	5.0																	TO-92-4
BCX79-7	45	45	5				120	220	2.00	5.0	0.60	1.00		100	.010	45		4.5						6.0	0.001		TO-92-4
							80		10.00	1.0																	TO-92-4
							40		100.00	1.0																	TO-92-4
							20		0.01	5.0																	TO-92-4

PACKAGE TO — 72

PIN CONFIGURATION AVAILABLE IN TO — 72

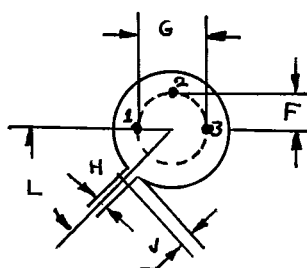
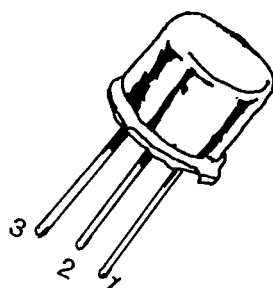
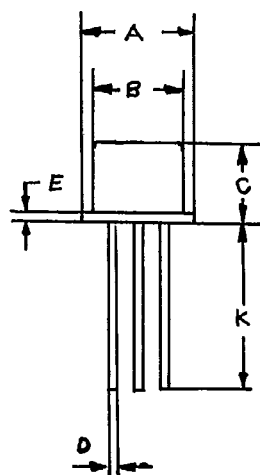
CDIL CODE STYLE	PIN-1	PIN-2	PIN-3	PIN-4
TO-72	EMITTER	BASE	COLLECTOR	CASE
TO-72-1	BASE	EMITTER	COLLECTOR	CASE
TO-72-2	SOURCE	DRAIN	GATE	CASE



DIM.	MIN	MAX
A	5,24	5,84
B	4,52	4,95
C	4,31	5,33
D	0,40	0,53
E	—	0,76
F	1,14	1,39
G	2,28	2,97
H	0,91	1,17
J	0,71	1,22
K	12,7	—
L	12 DEG.	48 DEG.

ALL DIMENSIONS IN M.M.

PACKAGE TO — 39



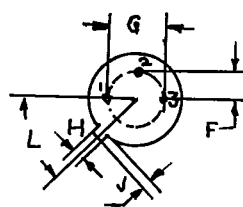
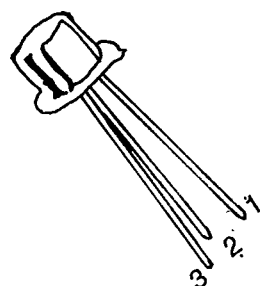
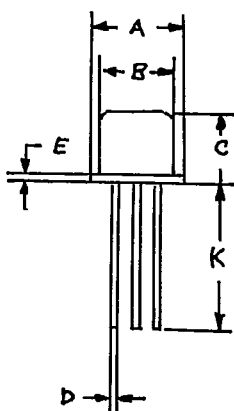
PIN CONFIGURATION:—

1. EMITTER
2. BASE
3. COLLECTOR

DIM.	MIN	MAX
A	8,50	9,39
B	7,74	8,50
C	6,09	6,60
D	0,40	0,53
E	—	0,88
F	2,41	2,66
G	4,82	5,33
H	0,71	0,86
J	0,73	1,02
K	12,7	—
L	42 DEG.	48 DEG.

ALL DIMENSIONS IN M.M.

PACKAGE TO — 18



PIN CONFIGURATION:—

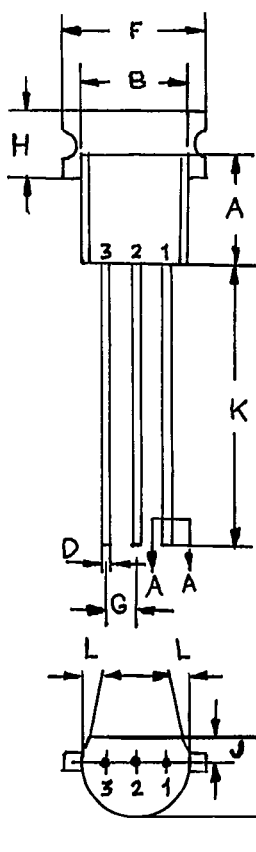
1. EMITTER
2. BASE
3. COLLECTOR

DIM.	MIN	MAX
A	5,24	5,84
B	4,52	4,97
C	4,31	5,33
D	0,40	0,53
E	—	0,76
F	—	1,27
G	—	2,97
H	0,91	1,17
J	0,71	1,21
K	12,7	—
L	45 DEG.	

ALL DIMENSIONS IN M.M.

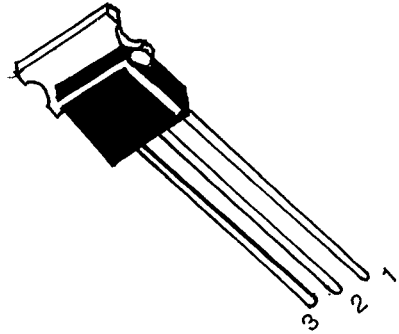
CDIL 373 0000153 2383394 D 63E

INDIA DEVICE CONTINENTAL

PACKAGE TO — 237

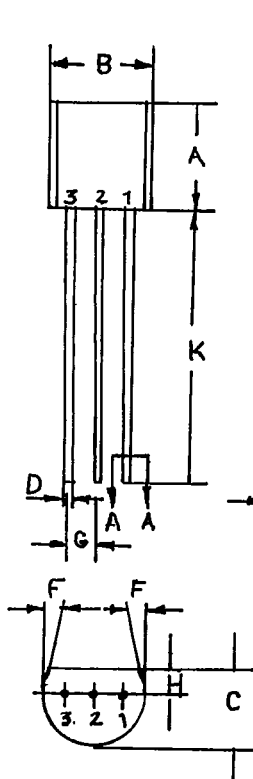
DIM.	MIN	MAX
A	4,32	5,33
B	4,45	5,20
C	3,18	4,19
D	0,41	0,55
E	0,35	0,50
F	—	0,55
G	1,14	1,40
H	—	2,54
K	12,70	—
L	5 DEG.	

ALL DIMENSIONS IN M.M.



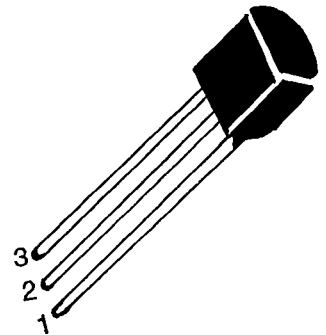
PIN CONFIGURATION AVAILABLE IN TO — 237

CDIL CODE STYLE	PIN 1	PIN 2	PIN3
TO—237	EMITTER	BASE	COLLECTOR
TO—237—1	BASE	COLLECTOR	EMITTER
TO—237—2	COLLECTOR	BASE	EMITTER

PACKAGE TO — 92

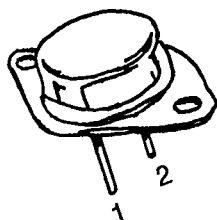
DIM.	MIN	MAX
A	4,32	5,33
B	4,45	5,20
C	3,18	4,19
D	0,41	0,55
E	0,35	0,50
F	5 DEG.	
G	1,14	1,40
H	1,14	1,53
K	12,70	—

ALL DIMENSIONS IN M.M.



PIN CONFIGURATION AVAILABLE IN TO — 92

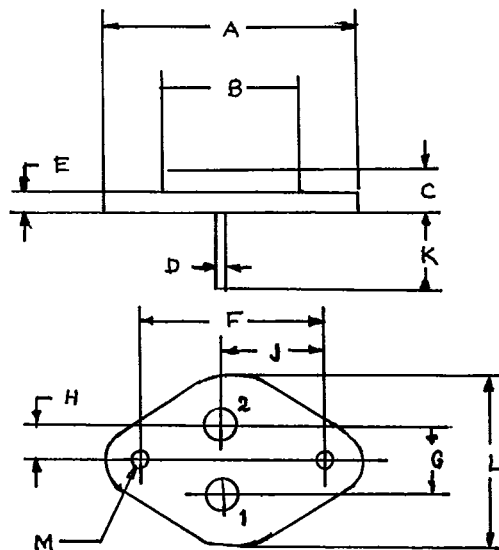
CDIL CODE STYLE	PIN 1	PIN 2	PIN3
TO—92	COLLECTOR	BASE	EMITTER
TO—92—1	BASE	COLLECTOR	EMITTER
TO—92—2	BASE	EMITTER	COLLECTOR
TO—92—3	COLLECTOR	EMITTER	BASE
TO—92—4	EMITTER	BASE	COLLECTOR



PIN CONFIGURATION:—

1. BASE
2. EMITTER
3. BODY COLLECTOR

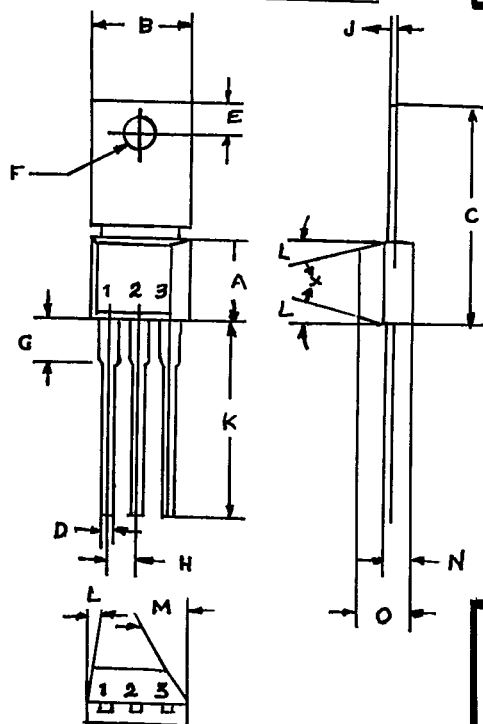
PACKAGE TO — 3



ALL DIMENSIONS ARE IN M.M.

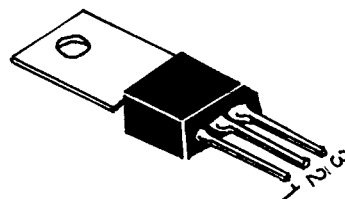
DIM.	MIN	MAX
A	—	39,37
B	—	22,22
C	6,35	8,50
D	0,96	1,09
E	—	1,77
F	29,90	30,4
G	10,69	11,18
H	5,20	5,72
J	16,64	17,15
K	11,15	12,25
L	—	26,67
M	3,84	4,19

PACKAGE TO — 202



PIN CONFIGURATION:—

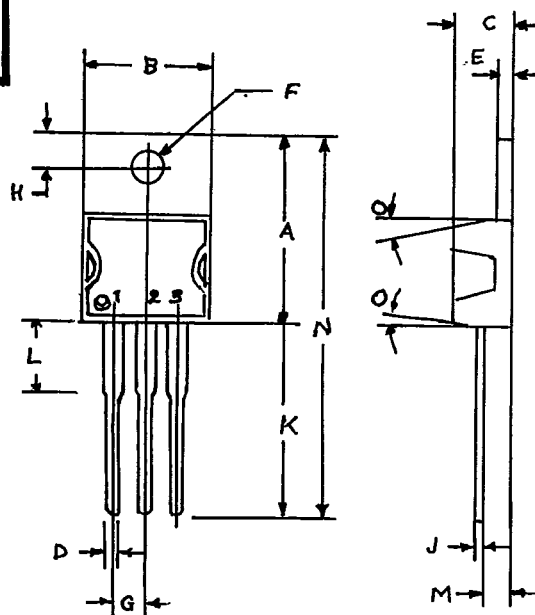
1. EMITTER
2. COLLECTOR
3. BASE



ALL DIMENSIONS IN M.M.

DIM.	MIN	MAX
A	—	8,60
B	—	10,41
C	19,30	21,80
D	0,60	0,80
E	2,80	3,80
F	3,12	3,35
G	1,27	2,54
H	2,41	2,54
J	0,40	0,66
K	9,65	12,20
L	5 DEG.	
M	45 DEG.	
N	0,92	1,78
O	3,30	4,83

PACKAGE TO — 220

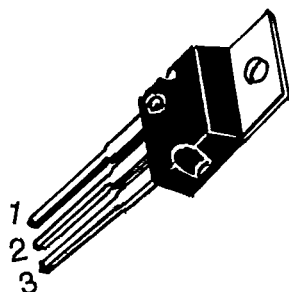


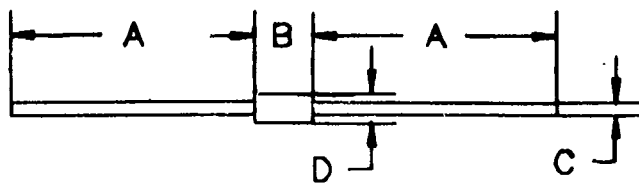
ALL DIMENSIONS IN M.M.

DIM.	MIN	MAX
A	14,22	16,51
B	9,63	10,67
C	3,56	4,83
D	—	0,90
E	1,15	1,40
F	3,75	3,85
G	2,29	2,79
H	2,54	3,43
J	—	0,56
K	12,70	14,73
L	—	6,35
M	2,03	2,92
N	—	31,24
O	7 1/2 DEG.	

PIN CONFIGURATION:—

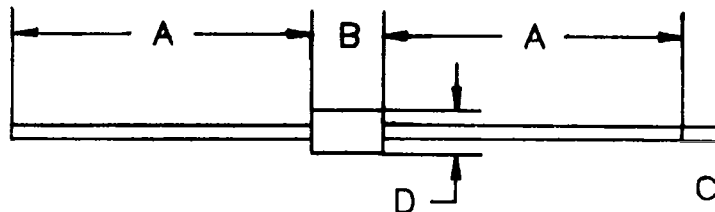
1. BASE
2. COLLECTOR
3. EMITTER





DIM.	MIN	MAX
A	25,40	—
B	3,03	4,44
C	0,46	0,56
D	1,52	2,29

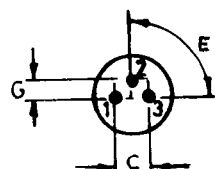
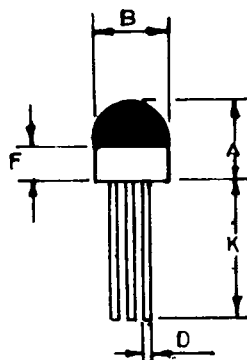
NOTES:—
1. CATHODE IS MARKED BY BAND.
2. ALL DIMENSIONS IN M.M.



DIM.	MIN	MAX
A	27,90	—
B	4,06	5,51
C	0,71	0,87
D	2,03	2,72

NOTES:—
1. CATHODE IS MARKED BY BAND.
2. ALL DIMENSIONS IN M.M.

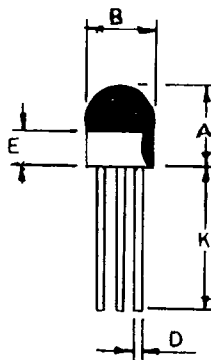
PACKAGE TO — 106



DIM.	MIN	MAX
A	—	6,35
B	—	5,63
C	2,54	
D	0,40	0,55
E	90 DEG.	
F	1,52	—
G	1,27	
K	10,16	—

PIN CONFIGURATION:—
1. EMITTER 2. BASE
3. COLLECTOR

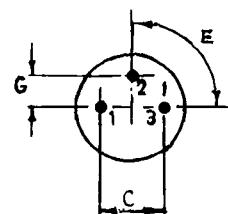
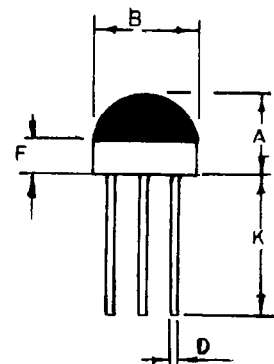
PACKAGE TO — 106



DIM.	MIN	MAX
A	—	6,35
B	—	5,63
C	1,52	
D	0,40	0,55
E	1,52	—
K	10,16	—

PIN CONFIGURATION:—
1. BASE 2. COLLECTOR
3. EMITTER

PACKAGE TO — 105



DIM.	MIN	MAX
A	—	6,35
B	—	8,25
C	5,08	
D	0,40	0,55
E	90 DEG.	
F	1,52	—
G	2,54	
K	10,16	—

PIN CONFIGURATION:—
1. EMITTER 2. BASE
3. COLLECTOR